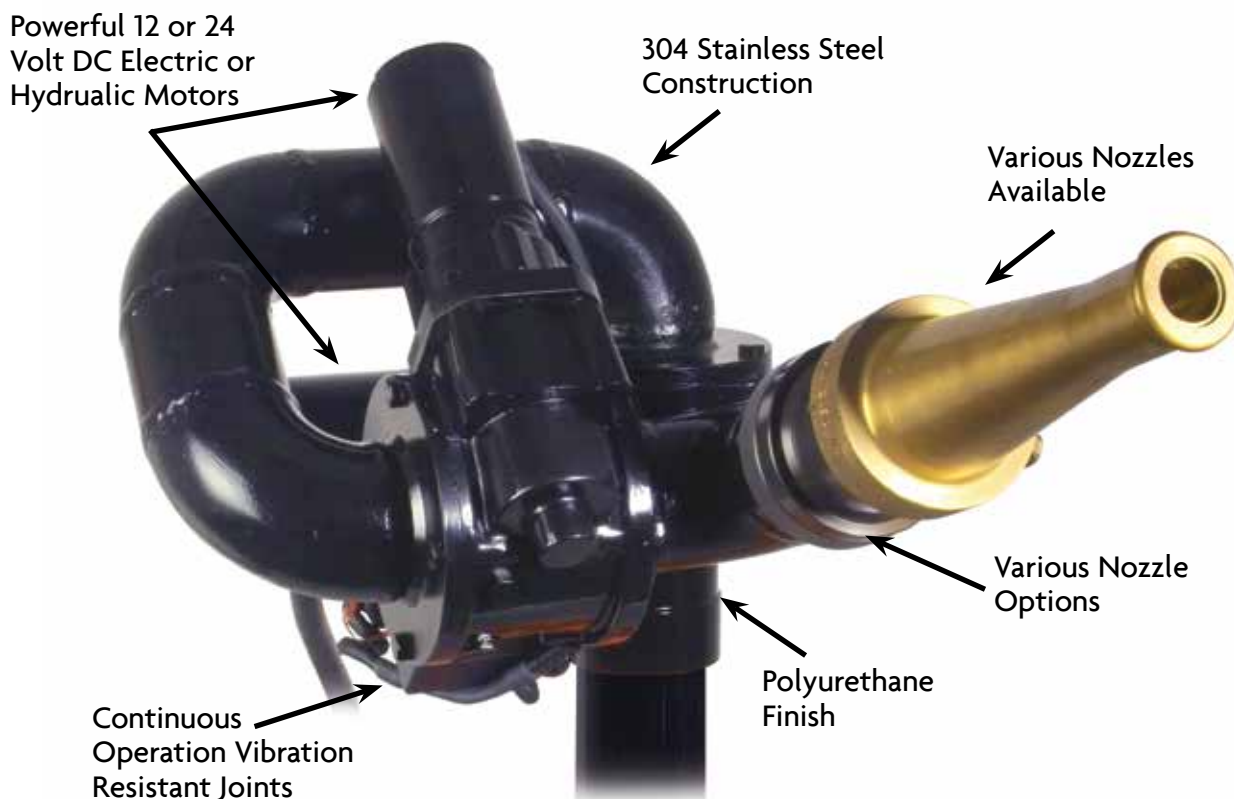


# Severe-Duty Monitor™



## STYLE 3491 Electric & 3492 Hydraulic

The Akron Brass Severe-Duty Monitor is a multi-purpose monitor designed to withstand continuous operation while mounted on heavy-duty equipment or fixed site applications. Dusty, dirty and continuous vibration environments is what the Severe-Duty Monitor was built to survive.



FEATURES	BENEFITS
• 2 1/2" Waterway	Flows up to 750 GPM
• 304 Stainless steel, polyurethane painted, SCH 40 waterway	Premium Corrosion Resistance
• Wear resistant high density polyethylene bearings	Durable
• No ball bearings to wear out	Mechanical joints resist wear
• No greasing required	Virtually no maintenance
• Field repairable joints	Reduces down time
• Environmentally sealed electric motors	No water in motors
• Hydraulic Motors (Optional)	Uses existing hydraulic system
• Smooth bore tip or electric fog/stream nozzle	Performance options
• Heavy-duty shafts & gearing	Superior load handling
• Complete control package (Electric only)	Nothing extra to buy
• Adjustable travel limits	Protects cab windows

**IN THE U.S. CALL 1.800.228.1161 | FAX 1.800.531.7335**

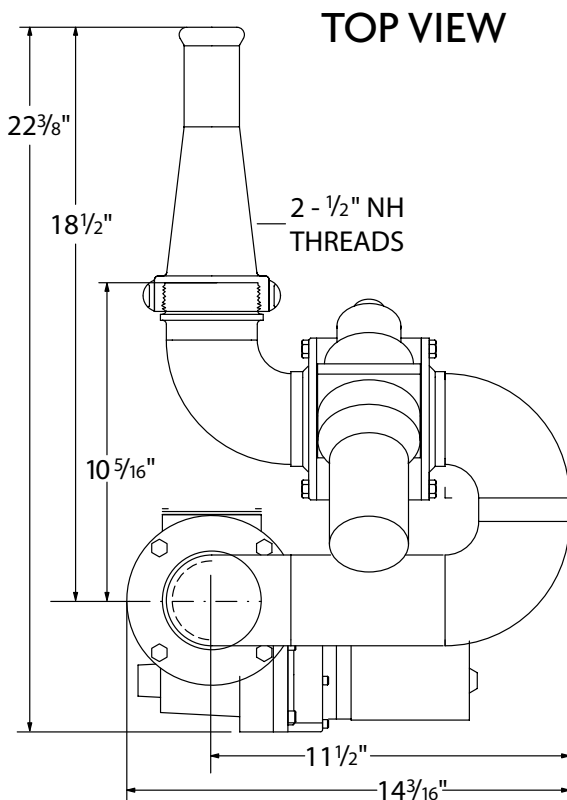
© Copyright 2014 Akron Brass Company. All rights reserved. No portion of this can be reproduced without the express written consent of the Akron Brass Company. (02/14)



# Severe-Duty Monitor™

## Applications:

- Open pit mining control
- Construction dust control
- Equipment wash down
- Landfill dust suppression
- Recycling dust suppression
- Coal mining
- Arena dust control
- Concrete production
- Agriculture
- Paper production
- Limestone quarry
- Ship wash down
- Fire suppression

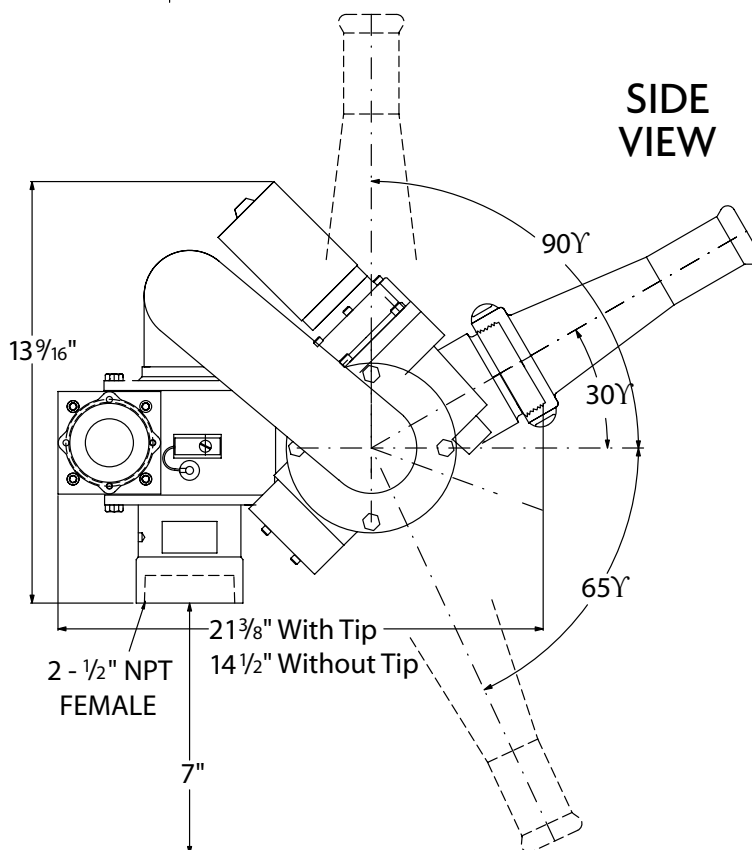


## PERFORMANCE & SPECIFICATIONS

320° Rotation
155° Elevation (+90°, -65°)
Fast travel, 20°/ sec
Auto oscillation 90° or 45°
Water pressures up to 200 psi
Hydraulic Operation 1/2 GPM @ 500 PSI
Flows up to 750 gpm
2 1/2" Waterway (63.5 mm)
2 1/2" NH outlet
2 1/2" NPT Inlet (Flange Optional)
12 or 24 Volt DC motors
Hydraulic Motor (Optional)
Joystick Monitor Control
Monitor Height 13 9/16" (331 mm)
Monitor Width 14 3/16" (360 mm)
Monitor Length 14 3/16" (360 mm)
Weight 57 lbs. (26 kg)

## NOZZLES

Smooth Bore Tip Style 0489
Stream Shaper Style 0485
Combination Fog/Straight Stream with Hydraulic Pattern control
Foam Nozzle Available



www.akronbrass.com



In U.S./International  
Akron Brass Company  
PH: 330.264.5678  
FAX: 330.264.2944

In North America  
Call Toll Free  
PH: 1.800.228.1161  
FAX: 1.800.531.7335

**IN THE U.S. CALL 1.800.228.1161 | FAX 1.800.531.7335**

© Copyright 2014 Akron Brass Company. All rights reserved. No portion of this can be reproduced without the express written consent of the Akron Brass Company. (02/14)