



# Style 9183 Field Service Kit for

## Saberjet™ Nozzles

- 1512 1" with Pistol Grip
- 1513 1"
- 1515 1 1/2"
- 1520 1 1/2" with Pistol Grip



**Tested... Proven... Trusted.**

ISO 9001 REGISTERED COMPANY

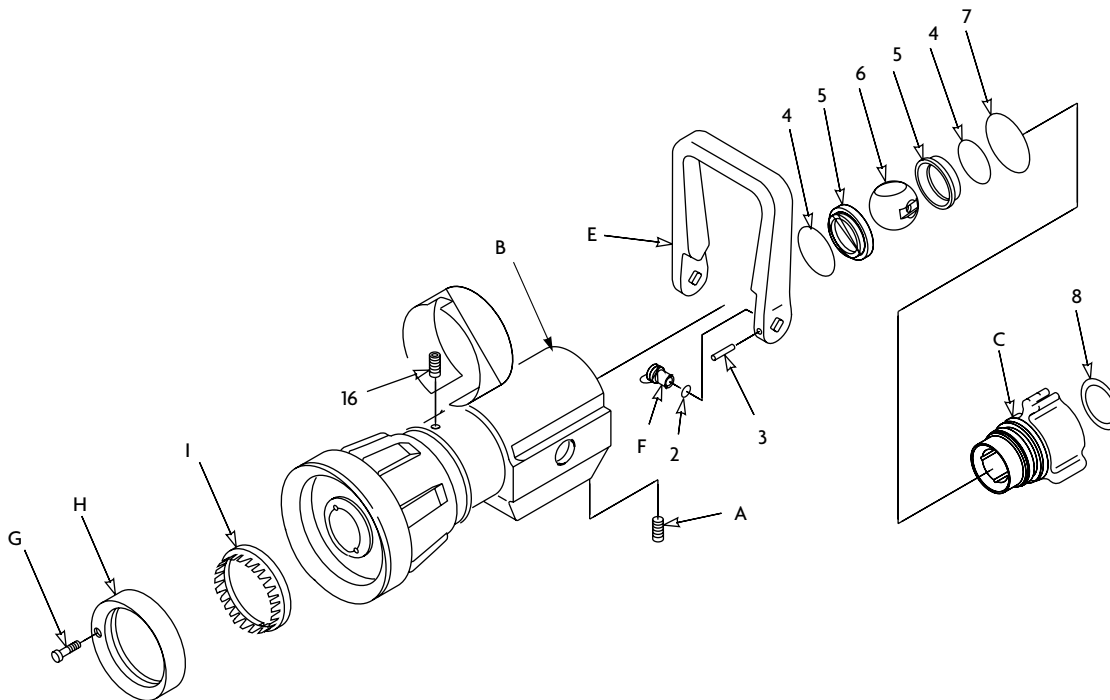
PHONE: 330.264.5678 or 800.228.1161 | FAX: 330.264.2944 or  
800.531.7335 | [akronbrass.com](http://akronbrass.com) REVISED: 8/11

**WARRANTY AND DISCLAIMER:** We warrant Akron Brass products for a period of five (5) years after purchase against defects in materials or workmanship. Akron Brass will repair or replace product which fails to satisfy this warranty. Repair or replacement shall be at the discretion of Akron Brass. Products must be promptly returned to Akron Brass for warranty service.

We will not be responsible for wear and tear, any improper installation, use, maintenance or storage, negligence of the owner or user, repair or modification after delivery, damage, failure to follow our instructions or recommendations or anything else beyond our control. **WE MAKE NO WARRANTIES, EXPRESS OR IMPLIED OTHER THAN THOSE INCLUDED IN THIS WARRANTY STATEMENT, AND WE DISCLAIM ANY IMPLIED WARRANTY OF MERCHANTABILITY OR FITNESS FOR ANY PARTICULAR PURPOSE.** Further, we will not be responsible for any consequential, incidental or indirect damages (including, but not limited to, any loss of profits) from any cause whatsoever. No person has authority to change this warranty.

© Akron Brass Company 2011 All rights reserved. No portion of this can be reproduced without the express written consent of Akron Brass Company.

## Style 9183 Field Service Kit

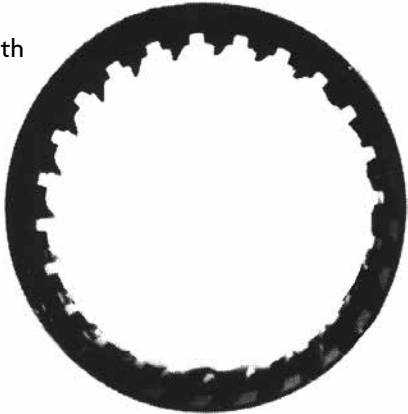


ITEM NO.	DESCRIPTION	PART NO.
1	Turbine Teeth	772153
2	O-Ring (2)	757269
3	Roll Pin (2)	744062
4	O-Ring (2)	757281
5	Seat (2)	769245
6	Ball	703567
7	O-Ring	757265
8	1/2" Gasket	717042
8	1" Gasket	717047

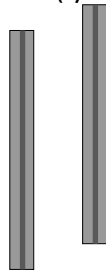
Parts included in this kit are normally all that are required to repair leaks in the shutoff area. If additional nozzle components are required, contact Akron Brass for the appropriate technical service bulletin or return the nozzle to our factory: Akron Brass Co., Old Mansfield Rd., Wooster, Ohio 44691 or Akron Manufacturing Co., P.O. Box 280, Aylmer, Ontario N5H 2R9.

USE THESE ILLUSTRATIONS TO IDENTIFY THE VARIOUS PARTS IN THIS KIT

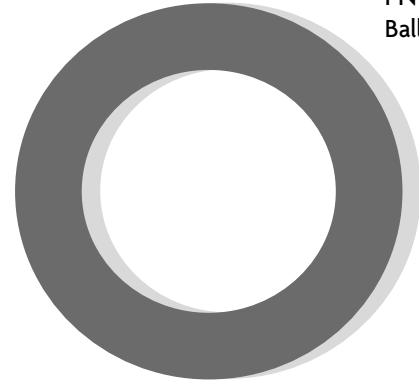
**Item No. 1**  
PN 7-72-153  
Turbine Teeth



**Item No. 3**  
PN 7-44-062  
Roll Pin (2)



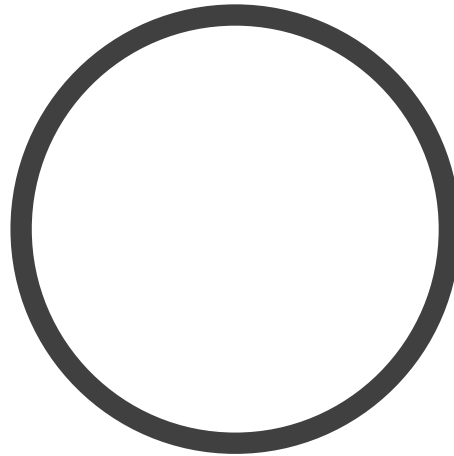
**Item No. 6**  
PN 7-03-567  
Ball



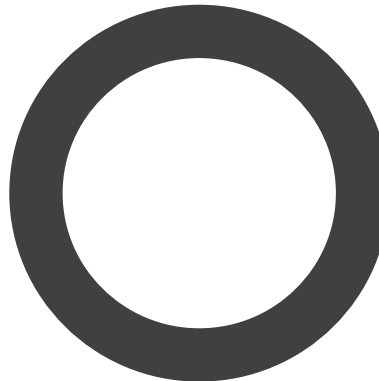
**Item No. 2**  
PN 7-57-269  
O-Ring (2)  
Handle Trunnion



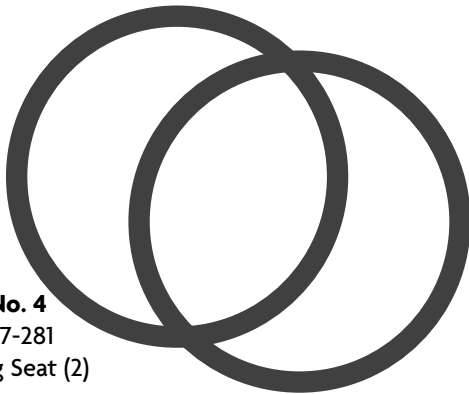
**Item No. 7**  
PN 7-57-265  
O-Ring  
Inlet Adapter



**Item No. 8**  
PN 7-17-042  
Swivel Gasket 1 1/2"



**Item No. 4**  
PN 7-57-281  
O-Ring Seat (2)

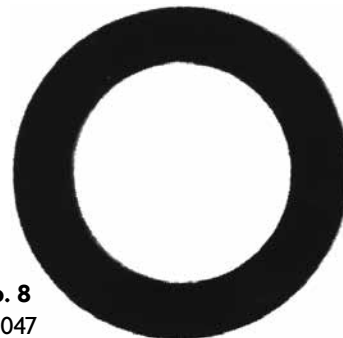


**Item No. 5**  
PN 7-69-245  
Seat (2)

**Rivet**  
PN 7-54-003  
USE TO DRIVE OUT ROLL  
PINS IN  
HANDLE TRUNNIONS



**Item No. 8**  
PN 7-17-047  
Swivel Gasket 1"



# FIELD SERVICE KIT INSTRUCTIONS

## DISASSEMBLY

1. Remove the swivel gasket (8 or 9).
2. Remove the set screw (A) at the swivel end of the shut-off body using a  $\frac{1}{8}$ " Allen wrench.
3. Insert a tool  $\frac{13}{16}$ " square (for Styles 1512, 1513 .740" square) into the grooves in the swivel adapter (C) and remove (counterclockwise).
4. Remove the O-Ring (7) from the inlet adapter (C).
5. Remove the seat and O-Ring (4 and 5) from the inlet adapter (C).
6. Turn the handle (E) into the open position and remove the ball (6).
7. Mark the end of the trunnions (F) and handle so they can be reassembled in exactly the same position. (Use chalk, grease pencil. etc.).
8. Take the rivet supplied in the service parts kit and drive out the roll pins (3) securing the handle to the trunnions.
9. Push the trunnions into the shutoff body until they are free. Remove the handle and trunnions.
10. Remove the O-Rings (2) from the trunnions.
11. Remove the front seat and O-Ring (4 and 5).
12. Remove the two set screws (G) on the turbine retaining ring (I) with a  $\frac{3}{32}$ " Allen wrench.
13. Remove the turbine retaining ring (H).
14. Remove the turbine teeth (I).

## ASSEMBLY

NOTE: All O-Rings must be lubricated with O-Ring grease before assembly.

1. Install the new O-Rings (4) on the new seats (5).
2. Insert one new seat with O-Ring into the shutoff body (B).
3. Install the new O-Rings (2) on the trunnions (F).
4. Place the handle (E) over the trunnions holes with the "closed" lettering facing the inlet.
5. Install the trunnions from inside the shutoff body, using the marks (Disassembly Step 7) to position properly.
6. Install the new roll pins (3) to secure the handle to the trunnions.
7. Turn the handle into the closed position and insert the new ball (6).
8. Install the other new seat (5) with O-Ring (4) into the recess of the inlet adapter (C).
9. Install the new O-Ring (7) in the shutoff body recess.
10. With the handle in the closed position, thread the inlet adapter into the shutoff body. (Continue tightening until resistance is felt when opening and closing the shutoff.)
11. Install the new swivel gasket (8 or 9).
12. Install the new turbine teeth (I).
13. Line up screw holes with the holes in the nozzle body and place the turbine retaining ring (H) back into position.
14. Install and tighten the set screws (G) which secure the retaining ring.
15. Test the nozzle with water to determine if the shutoff functions properly. If a small leak is present, tighten the swivel adapter slightly to eliminate the leak.
16. Once the shutoff functions properly, observe the swivel adapter through the set screw hole in the shutoff body. If a full thread is visible, drill a slight recess for the set screw use a  $\frac{3}{16}$ " drill bit). Install and tighten the set screw (A).