

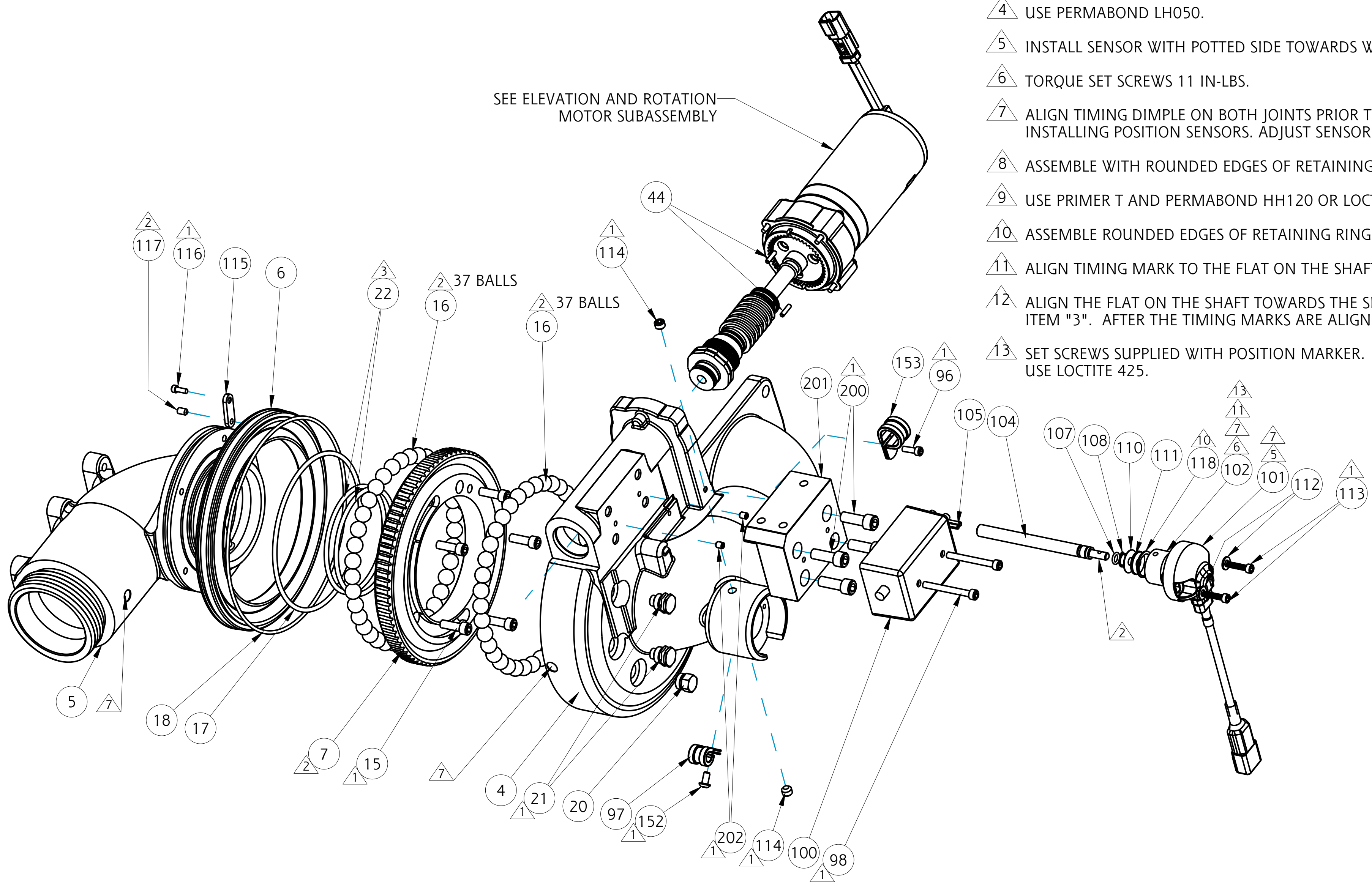
- ASSEMBLY NOTES:
- USE PARKER O-LUBE ON ALL O-RINGS AND MATING SURFACES UNLESS OTHERWISE NOTED.
- 1 USE PERMABOND LM113 OR LOCTITE 222.
 - 2 USE LOW-TEMP LUBRIPLATE.
 - 4 USE PERMABOND LH050.
 - 5 INSTALL SENSOR WITH POTTED SIDE TOWARDS WATERWAY.
 - 6 TORQUE SET SCREWS 11 IN-LBS.
 - 7 ALIGN TIMING DIMPLE ON BOTH JOINTS PRIOR TO INSTALLING POSITION SENSORS. ADJUST SENSOR OUTPUT TO 2.50± 0.01 V.
 - 8 ASSEMBLE WITH ROUNDED EDGES OF RETAINING RING TOWARDS WASHERS.
 - 9 USE PRIMER T AND PERMABOND HH120 OR LOCTITE 277.
 - 10 ASSEMBLE ROUNDED EDGES OF RETAINING RING TOWARDS WATERWAY.
 - 11 ALIGN TIMING MARK TO THE FLAT ON THE SHAFT.
 - 12 ALIGN THE FLAT ON THE SHAFT TOWARDS THE SLOT ON ITEM "3". AFTER THE TIMING MARKS ARE ALIGNED.
 - 13 SET SCREWS SUPPLIED WITH POSITION MARKER. USE LOCTITE 425.

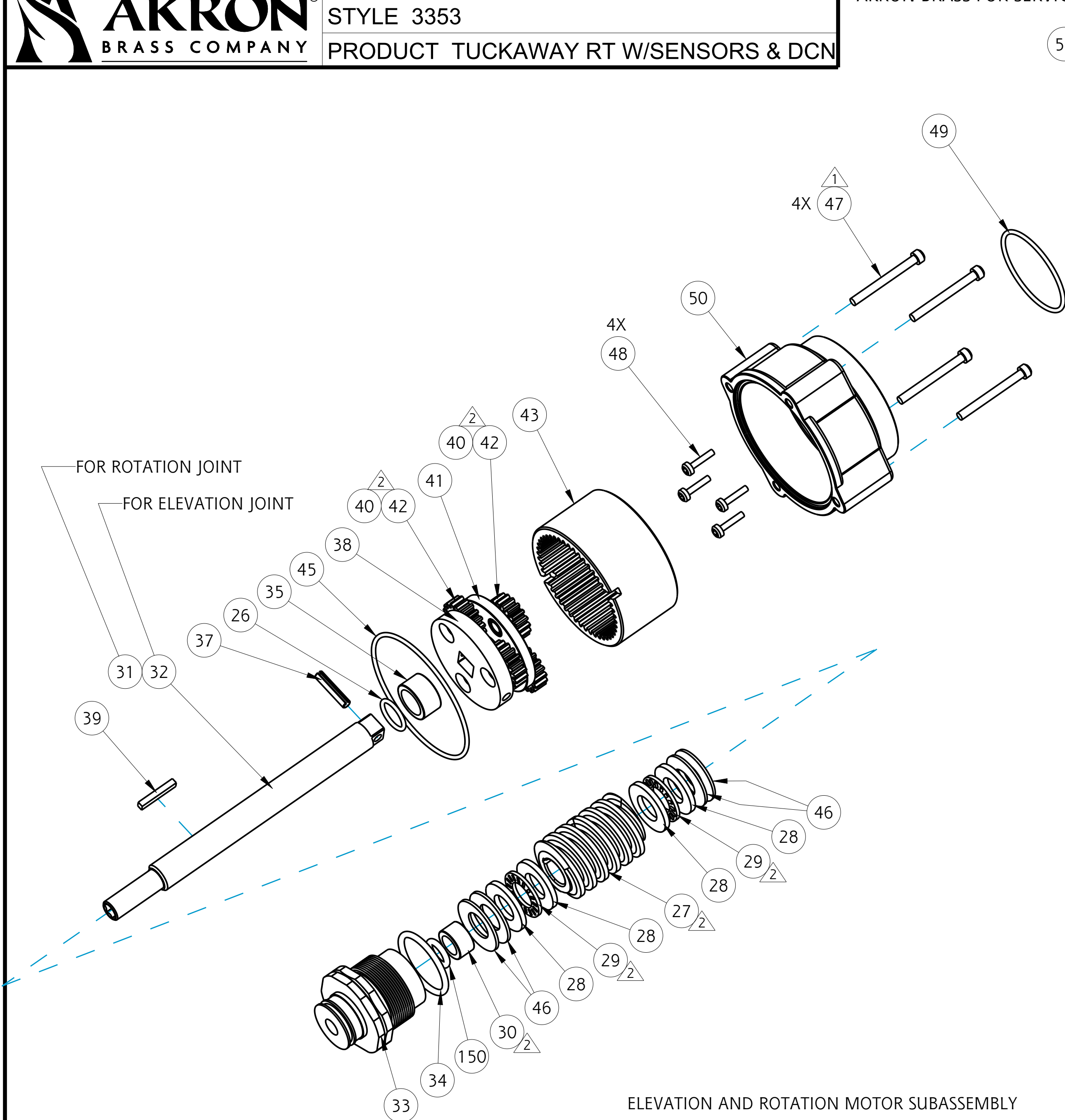
Chg.	Date
02	06-18
03	01-20

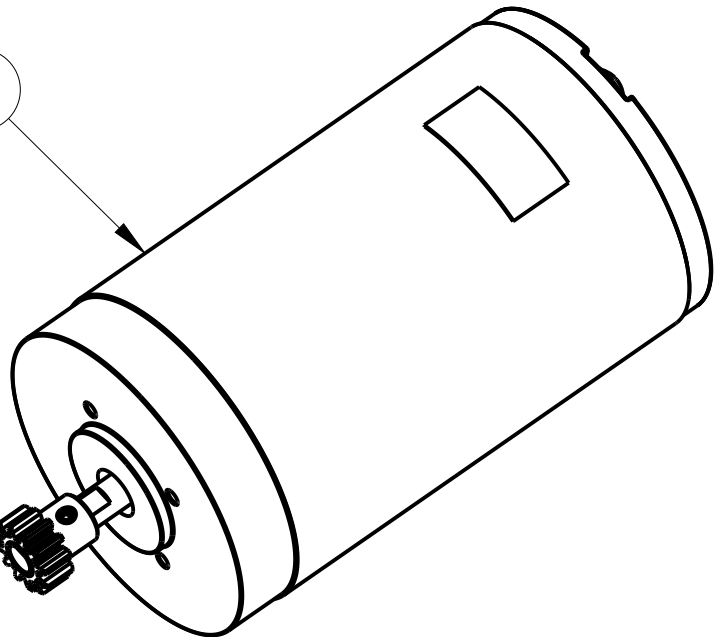
ASSEMBLY NOTES:

USE PARKER O-LUBE ON ALL O-RINGS AND MATING SURFACES UNLESS OTHERWISE NOTED.

- 1 USE PERMABOND LM113 OR LOCTITE 222.
- 2 USE LOW-TEMP LUBRIPLATE.
- 4 USE PERMABOND LH050.
- 5 INSTALL SENSOR WITH POTTED SIDE TOWARDS WATERWAY.
- 6 TORQUE SET SCREWS 11 IN-LBS.
- 7 ALIGN TIMING DIMPLE ON BOTH JOINTS PRIOR TO INSTALLING POSITION SENSORS. ADJUST SENSOR OUTPUT TO 2.50± 0.01 V.
- 8 ASSEMBLE WITH ROUNDED EDGES OF RETAINING RING TOWARDS WASHERS.
- 9 USE PRIMER T AND PERMABOND HH120 OR LOCTITE 277.
- 10 ASSEMBLE ROUNDED EDGES OF RETAINING RING TOWARDS WATERWAY.
- 11 ALIGN TIMING MARK TO THE FLAT ON THE SHAFT.
- 12 ALIGN THE FLAT ON THE SHAFT TOWARDS THE SLOT ON ITEM "3". AFTER THE TIMING MARKS ARE ALIGNED.
- 13 SET SCREWS SUPPLIED WITH POSITION MARKER. USE LOCTITE 425.





- 

51

49

47

48

50
- ASSEMBLY NOTES:

USE PARKER O-LUBE ON ALL O-RINGS AND MATING SURFACES UNLESS OTHERWISE NOTED.

 - 1 USE PERMABOND LM113 OR LOCTITE 222.
 - 2 USE LOW-TEMP LUBRIPLATE.
 - 4 USE PERMABOND LH050.
 - 5 INSTALL SENSOR WITH POTTED SIDE TOWARDS WATERWAY.
 - 6 TORQUE SET SCREWS 11 IN-LBS.
 - 7 ALIGN TIMING DIMPLE ON BOTH JOINTS PRIOR TO INSTALLING POSITION SENSORS. ADJUST SENSOR OUTPUT TO 2.50± 0.01 V.
 - 8 ASSEMBLE WITH ROUNDED EDGES OF RETAINING RING TOWARDS WASHERS.
 - 9 USE PRIMER T AND PERMABOND HH120 OR LOCTITE 277.
 - 10 ASSEMBLE ROUNDED EDGES OF RETAINING RING TOWARDS WATERWAY.
 - 11 ALIGN TIMING MARK TO THE FLAT ON THE SHAFT.
 - 12 ALIGN THE FLAT ON THE SHAFT TOWARDS THE SLOT ON ITEM "3". AFTER THE TIMING MARKS ARE ALIGNED.
 - 13 SET SCREWS SUPPLIED WITH POSITION MARKER. USE LOCTITE 425.



TECHNICAL SERVICE PARTS

STYLE 3353

PRODUCT TUCKAWAY RT W/SENSORS & DCN

IF AN ITEM IS NOTED AS "NOT FIELD REPAIRABLE", OR YOU WISH TO RETURN AN ITEM TO AKRON BRASS FOR SERVICE PLEASE GO ONLINE TO, **ONLINEREPAIR.AKRONBRASS.COM**

Chg.	Date
02	06-18
03	01-20

Find		Description	Item	QTY
1		PIPE INLET 3353	118586	1
2		BASE INLET 3353	122374	1
3		ELBOW INLET 3353	127121	1
4		ELBOW MIDDLE	122524	1
5		ELBOW OUTLET	122378	1
6		RING BALL RETAINER	117690	1
7		GEAR OUTLET	117689	1
8		O-RING 2-153	757327	1
9		SCREW SOCKET HEAD CAP 3/8 -16 X 1"	767047	1
10		O-RING 2-238	757036	2
11	A	BALL BRASS 3/8"	-	82
12		PLUG 1/2 -20 X 1/4"	742112	4
13		STOP VERTICAL	769596	2
14		O-RING 2-158	757326	1
15		SCREW SOCKET HEAD CAP 1/4 -20 X 3/4"	765030	5
16	B	BALL BRONZE 1/2"	-	74
17		O-RING 2-249	757075	1
18		O-RING 2-166	757366	1
20		PLUG 1/2-20 X1/2"	744337	2
21		STOP	769498	1
22		O-RING 2-236	757035	2
23		PLUG ELEVATION 5/8-18	744397	2
24		SCREW SOCKET HEAD CAP 7/16-14 X 1-1/4	765207	4
25		O-RING 2-237	757081	1
26		O-RING 2-014	757041	2
27		GEAR WORM	718273	2
28		WASHER THRUST	784121	8
29		BEARING NEEDLE	703453	4
30		BEARING 3/8"ID	704393	2
31		SHAFT ELEVATION	770353	1
32		SHAFT ROTATION	770352	1
33		CAP BEARING	121467	2
34		O-RING 2-121	757329	2
35		BEARING ROLLER NEEDLE 1/2"ID	704395	2
37	C	PIN ROLL	744118	2
38	C	CARRIER OUTPUT	-	2
39		KEY SPECIAL	727044	2
40	C	GEAR PLANET	-	12
41	C	PLATE CARRIER	-	2
42	C	RIVET SHORT	-	12
43		GEAR INTERNAL ELEVATION	718164	2
44		PIN ROLL	744288	4
45		O-RING 2-036	757312	2

Find		Description	Item	QTY
46		SPRING BELLEVILLE	769276	8
47		SCREW SOCKET HEAD CAP 6-32 X 1 3/8"	767132	8
48		SCREW SOCKET HEAD CAP W/PATCH 6-32 X 1/2"	765052	8
49		O-RING 2-029	757056	2
50		HOUSING GEARBOX	109320	2
51		MOTOR 12V	35982013	2
51		MOTOR 24V	35982012	2
94		TAG ID	773330	1
95		NAIL GRIP 3/16"DIA	736052	4
96		SCREW SOCKET HEAD CAP NYLON PATCH 8-32 X 1/2"	768155	3
97		CLAMP CABLE 5/16"	707548	2
98		SCREW SOCKET HEAD CAP 10-24 X 1 3/4"	767126	4
99		SCREW SOCKET HEAD CAP 3/8 -16 X 1 1/4"	765154	3
100		HARNESS WIRING 96"	721630	1
100		HARNESS WIRING 138" SPECIAL	721631	1
101		SENSOR MAGNETIC ROTARY ANGLE	60430006	2
102		MARKER POSITION MAGNET	731127	2
103		SHAFT ELEVATION FEEDBACK	770350	1
104		SHAFT ELEVATION FEEDBACK	770348	1
105		PIN ROLL	744078	2
106		PIN ROLL	744430	1
107		O-RING 2-010	757005	3
108		RING TRUARC	758247	2
110		SHIM .730 X .240 X .015	769887	2
111		WASHER .732 X .238 X .060	784192	2
112		WASHER #8	784123	4
113		SCREW SOCKET HEAD CAP 8-32 X 3/4"	765178	4
114		SCREW SOCKET HEAD CUP POINT SET 5/16-18 X 1/4"	765071	4
115		KEEPER	120137	1
116		SCREW SOCKET HEAD CAP 6-32 X 3/8	765175	1
117		SCREW SOCKET HEAD CUP POINT SET 10-24 X 5/16"	765040	1
118		RING RETAINING	758127	2
150		O-RING 2-110	757295	2
151		AUTO DRAIN	34670001	1
152		SCREW BUTTON HEAD 10-24 X 3/8"	765143	3
153		CLAMP CABLE 1/2 ID	707188	2
200		SCREW SOCKET HEAD CAP 5/16-18 X 7/8"	767048	4
201		SPACER (FOR DRY CHEMICAL NOZZLE)	121110	1
202		SCREW SOCKET HEAD SET 10-24 X 1/4"	765025	2
A		KIT OF 50 BALLS, 3/8 BRASS	109342	
B		KIT OF 50 BALLS, 1/2 BRONZE	116252	
C		GEAR REPAIR KIT	33530029	

PHONE: 330.264.5678 or 800.228.1161 | FAX: 330.264.2944 or 800.531.7335 | www.akronbrass.com

WARRANTY AND DISCLAIMER*: We warrant Akron Brass products for a period of five (5) years* after purchase against defects in materials or workmanship. Akron Brass will repair or replace product which fails to satisfy this warranty. Repair or replacement shall be at the discretion of Akron Brass. Products must be promptly returned to Akron Brass for warranty service. We will not be responsible for: wear and tear; any improper installation, use, maintenance or storage; negligence of the owner or user; repair or modification after delivery; failure to follow our instructions or recommendations; or anything else beyond our control. WE MAKE NO WARRANTIES, EXPRESS OR IMPLIED, OTHER THAN THOSE INCLUDED IN THIS WARRANTY STATEMENT, AND WE DISCLAIM ANY IMPLIED WARRANTY OF MERCHANTABILITY OR FITNESS FOR ANY PARTICULAR PURPOSE. Further, we will not be responsible for any consequential, incidental or indirect damages (including, but not limited to, any loss of profits) from any cause whatsoever. No person has authority to change this warranty. *Unless otherwise provided herein. Akron Brass industrial electronic components & the Severe-Duty Monitor have a one (1) year warranty. Select Akron Brass handline nozzles and valves carry a ten (10) year warranty. Scene Star Lights carry a (6) year warranty. Weldon products have a two (2) year warranty from date of manufacture (excluding consumable components). Select Weldon LED products carry a five (5) year warranty. Honda products have the manufacturers' warranty and Akron Brass disclaims any warranty in respect of those products.

© 2016 Akron Brass Company. All rights reserved. No portion of this can be reproduced without the express written consent of the Akron Brass Company.

Parts List Sheet:

124512