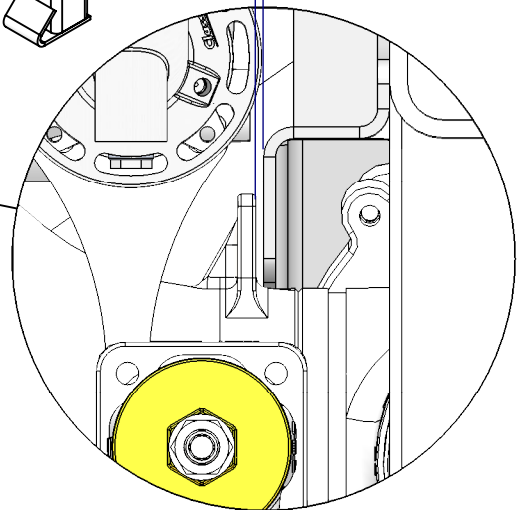
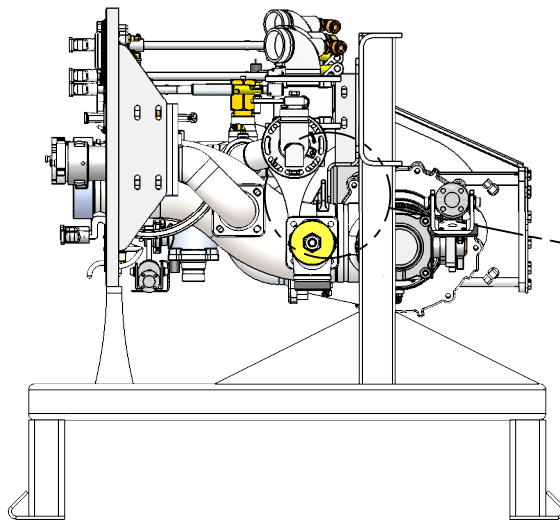
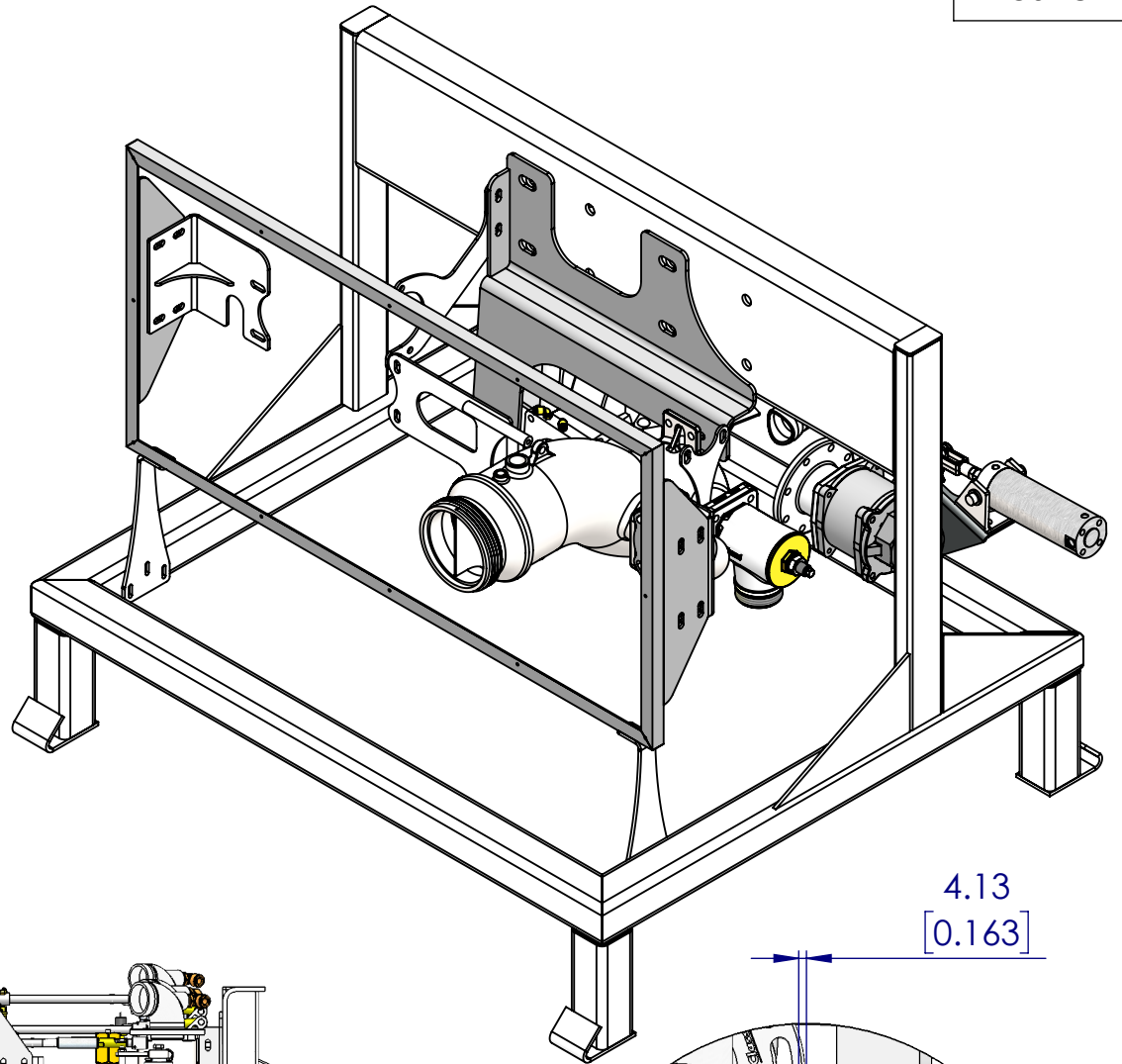
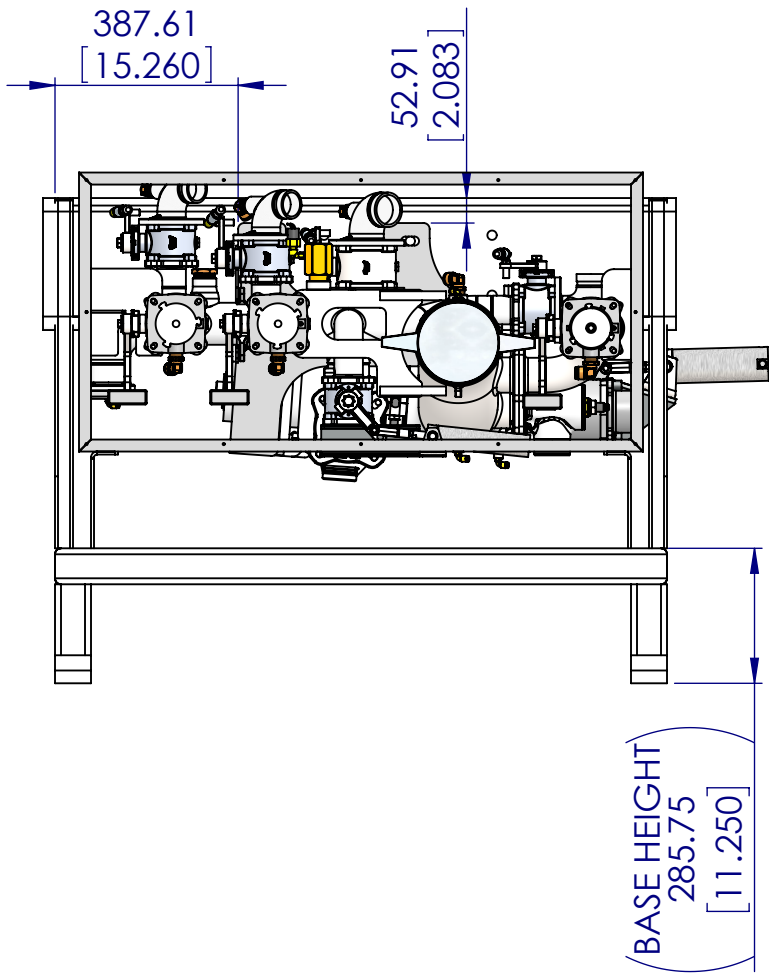
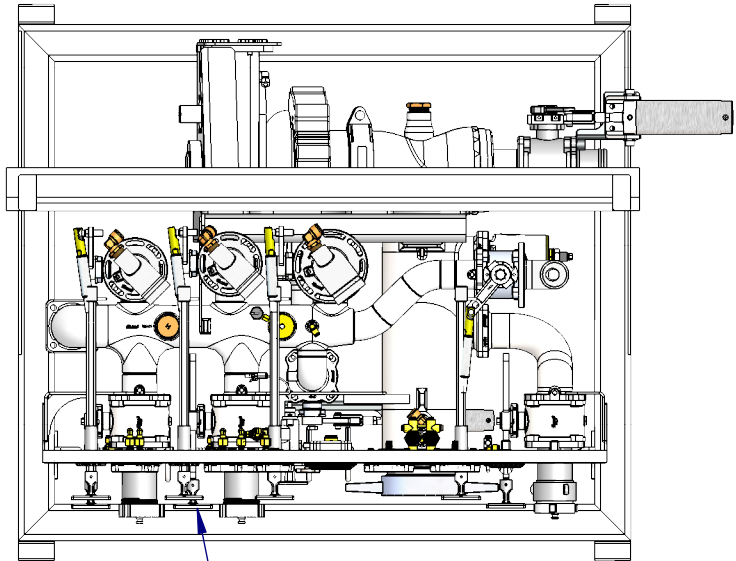


- PREPARATION INSTRUCTIONS:
1. MOUNT PUMP TO 122003 BRACKET.
  2. MOUNT 122003 BRACKET TO PUMP CART.
  3. INSTALL 121540 GEARBOX BRACKET, KEEPING GEARBOX LEVEL.
  4. MOUNT WELD FIXTURE TO PUMP CART.
    - IF BASE HEIGHT IS 9.75", SPACE & WELD FIXTURE UP 1.50".
  5. SEND CART AND TANK FILL SUPPORT BRACKET TO WELDERS IF NECESSARY.




- ASSEMBLY INSTRUCTIONS:
6. REMOVE TOP PORTION OF WELD FIXTURE.
  7. INSTALL #1 & #2 VALVES WITH STRAIGHT FLANGE.
  8. INSTALL PONY VALVE WITH SWIVEL FLANGE.
  9. MOUNT 121401 & 121402 PANEL FRAME BRACKETS TO PANEL.
  10. MOUNT PANEL FRAME ASSEMBLY TO #1 DISCHARGE & PONY.
  11. SECURE PANEL TO 121400 PANEL FRAME.
  12. ADJUST PANEL TO MATCH CUTOUTS TO MANIFOLDING.
  13. TIGHTEN AND MARK ALL HARDWARE.
  14. REMOVE PANEL FROM FRAME.
  15. REMOVE MAIN PORTION OF WELD FIXTURE.
  16. SHIP LOOSE MASTER DRAIN IF NOT MOUNTED.
  17. SHIP LOOSE 121049 WASHING PLACARD.

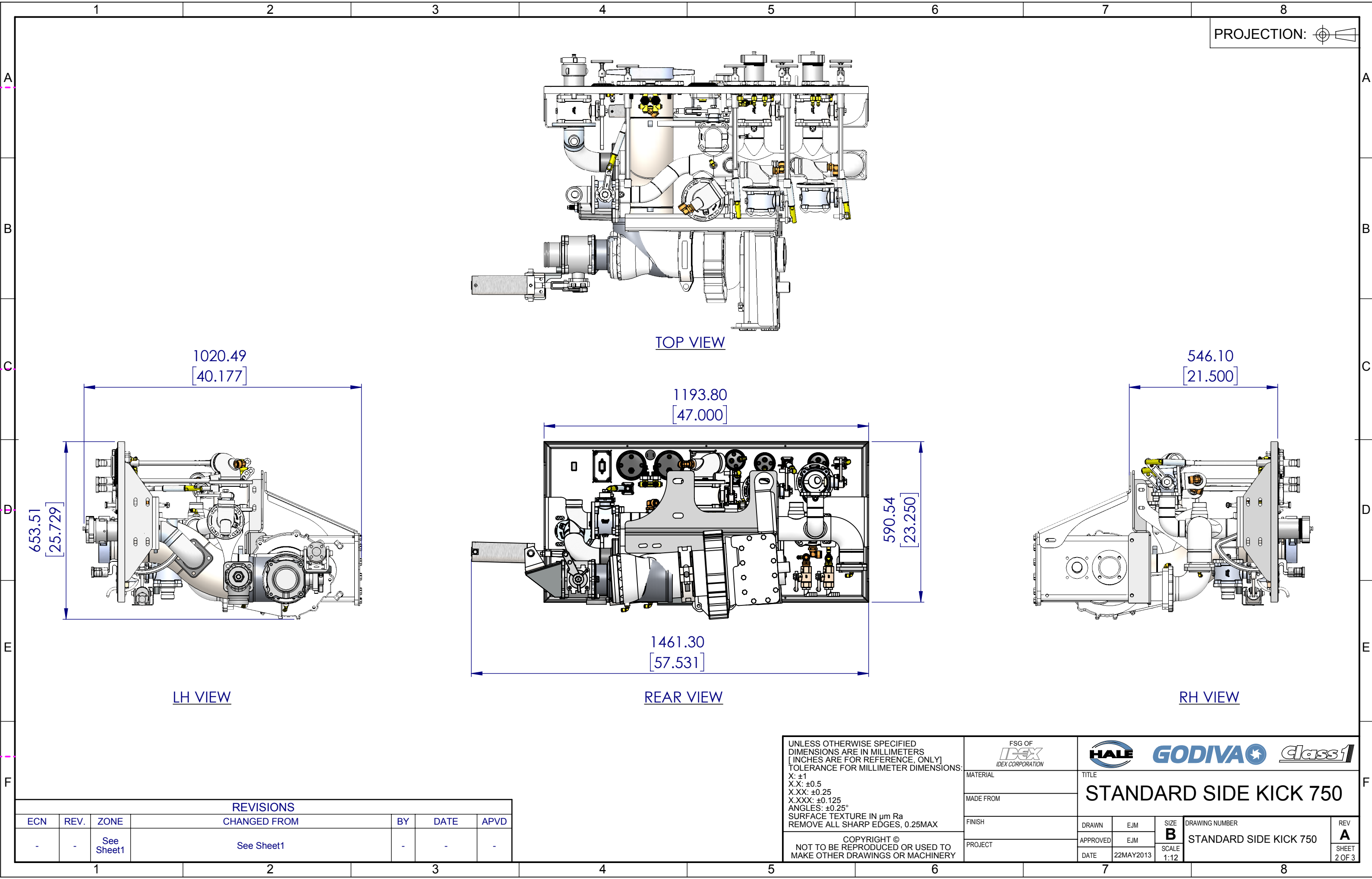


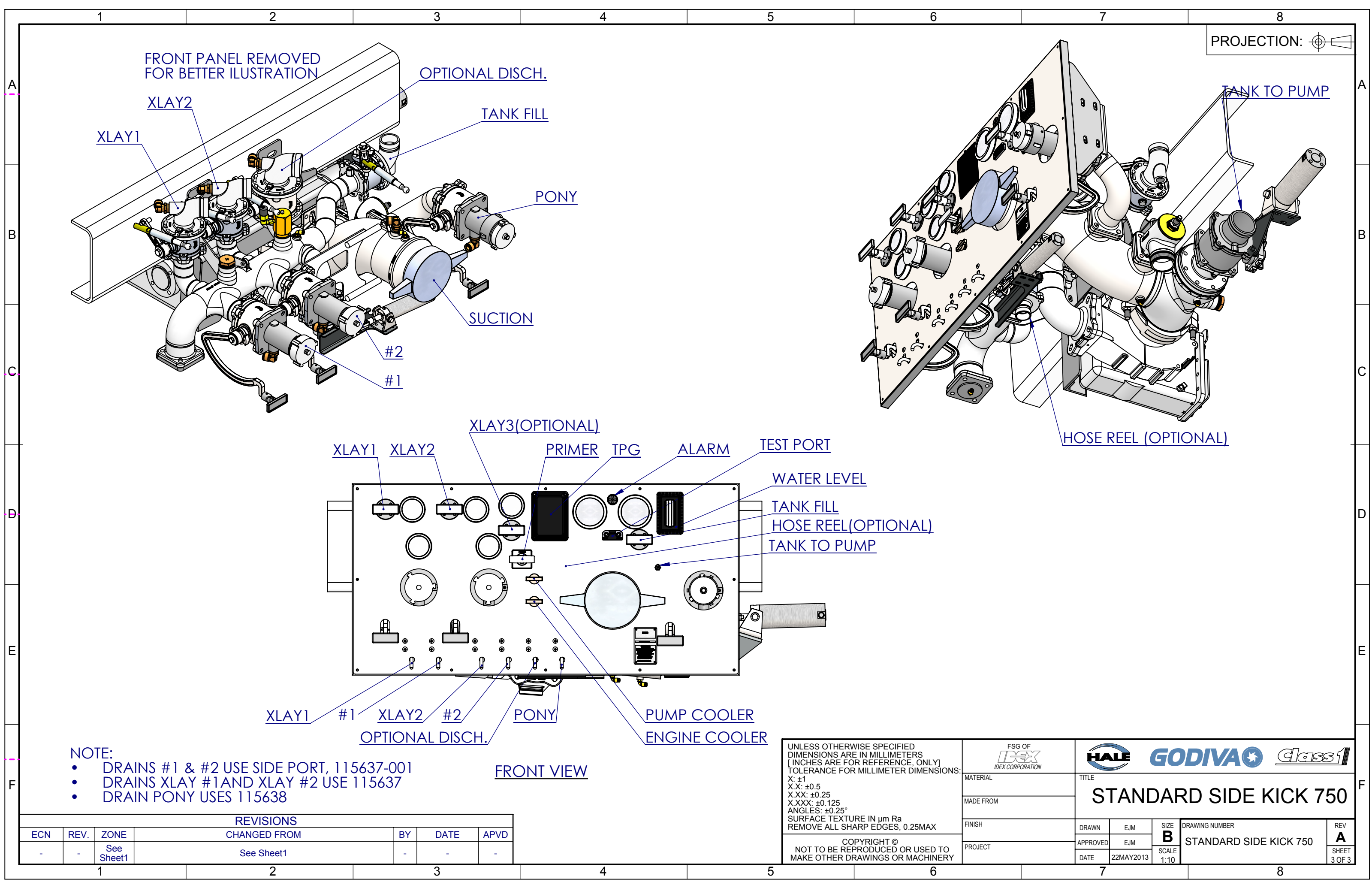
REVISIONS					
ECN	REV.	ZONE	CHANGED FROM	BY	DATE
--	A	--	ORIGINAL RELEASE	EJM	22MAY2013

UNLESS OTHERWISE SPECIFIED  
DIMENSIONS ARE IN MILLIMETERS  
[INCHES ARE FOR REFERENCE, ONLY]  
TOLERANCE FOR MILLIMETER DIMENSIONS:  
X: ±1  
X.X: ±0.5  
X.XX: ±0.25  
X.XXX: ±0.125  
ANGLES: ±0.25°  
SURFACE TEXTURE IN µm Ra  
REMOVE ALL SHARP EDGES, 0.25MAX

COPYRIGHT ©  
NOT TO BE REPRODUCED OR USED TO  
MAKE OTHER DRAWINGS OR MACHINERY

FSG OF <b>IDEX</b> IDEX CORPORATION		  				
MATERIAL		TITLE  STANDARD SIDE KICK 750				
MADE FROM						
FINISH		DRAWN	EJM	SIZE <b>B</b>	DRAWING NUMBER  STANDARD SIDE KICK 750	REV <b>A</b>
PROJECT		APPROVED	EJM	SCALE 1:16		SHEET 1 OF 3
		DATE	22MAY2013			





NOTE:

- DRAINS #1 & #2 USE SIDE PORT, 115637-001
- DRAINS XLAY #1 AND XLAY #2 USE 115637
- DRAIN PONY USES 115638

REVISIONS					
ECN	REV.	ZONE	CHANGED FROM	BY	DATE
-	-	See Sheet1	See Sheet1	-	-

UNLESS OTHERWISE SPECIFIED  
DIMENSIONS ARE IN MILLIMETERS  
[INCHES ARE FOR REFERENCE, ONLY]  
TOLERANCE FOR MILLIMETER DIMENSIONS:  
X: ±1  
X.X: ±0.5  
X.XX: ±0.25  
X.XXX: ±0.125  
ANGLES: ±0.25°  
SURFACE TEXTURE IN µm Ra  
REMOVE ALL SHARP EDGES, 0.25MAX

COPYRIGHT ©  
NOT TO BE REPRODUCED OR USED TO  
MAKE OTHER DRAWINGS OR MACHINERY

FSG OF <b>ITEX</b> IDEX CORPORATION		<b>HALE</b> <b>GODIVA</b> <i>class1</i>	
MATERIAL		TITLE	
MADE FROM		STANDARD SIDE KICK 750	
FINISH		DRAWN	EJM
PROJECT		APPROVED	EJM
		DATE	22MAY2013
		SIZE	B
		SCALE	1:10
		DRAWING NUMBER	STANDARD SIDE KICK 750
		REV	A
		SHEET	3 OF 3