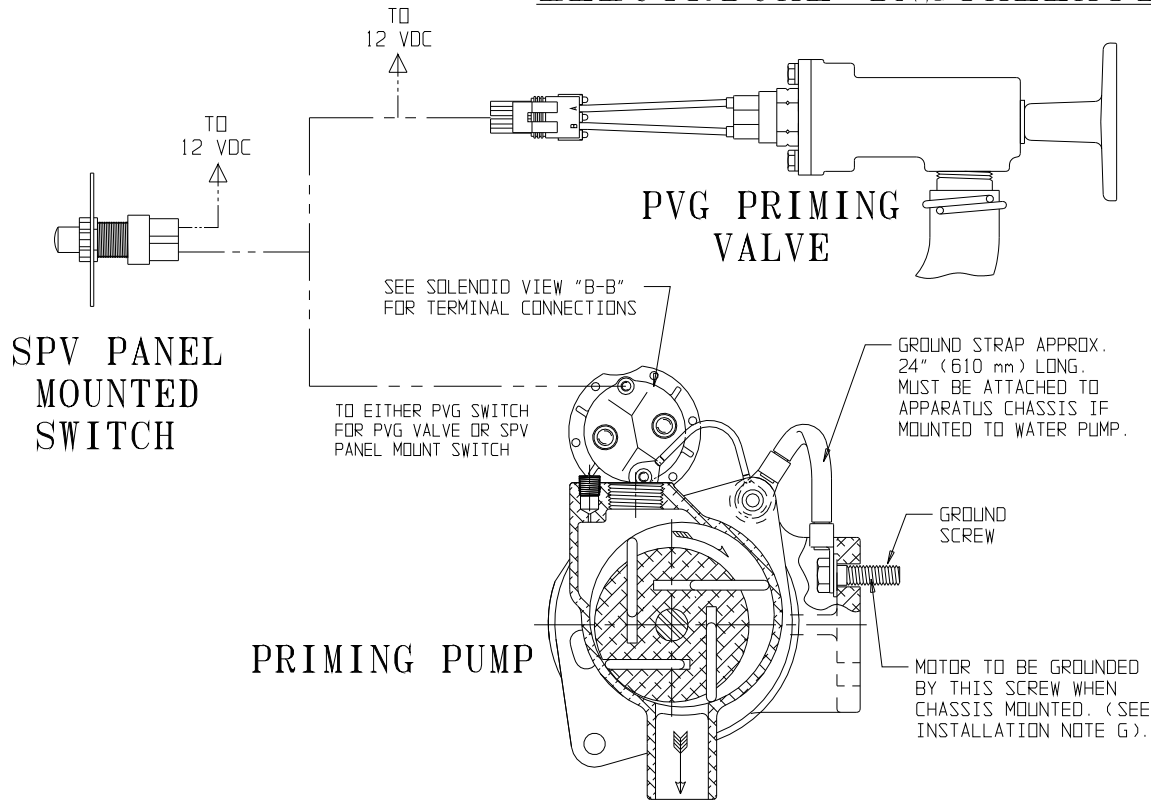
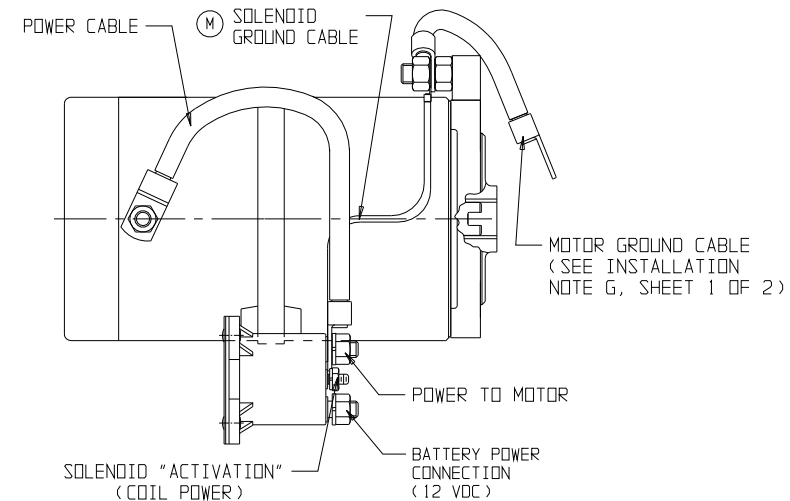


HALE TYPE ESP-12/ESPS-12 PRIMING PUMP ELECTRICAL INSTALLATION DETAILS



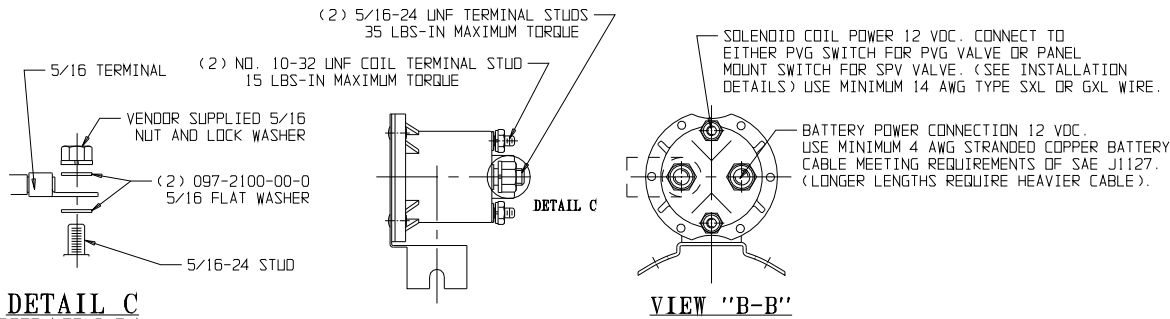
(M) SOLENOID RELOCATION INSTRUCTIONS

- 1- REMOVE THE EXISTING SOLENOID CABLES AND LOOSEN THE SOLENOID CLAMP SCREW.
- 2- POSITION THE SOLENOID IN THE DESIRED LOCATION. PLACE THE CLAMP BETWEEN THE (4) CLAMP GUIDES ON THE SOLENOID MOUNTING BRACKET. TIGHTEN THE SOLENOID CLAMP.
- 3- TIGHTEN THE LOWER POWER TERMINAL NUT ON THE MOTOR TO 50 LBS-IN. INSTALL THE CABLE AND THE UPPER POWER TERMINAL NUT. HOLD THE LOWER TERMINAL NUT WITH A WRENCH WHILE TIGHTENING THE UPPER TERMINAL NUT TO 50 LBS-IN. SEAL CONNECTION WITH BATTERY TERMINAL SEALER AND REPOSITION BOOT.
- 4- INSTALL THE POWER CABLE ON (1) OF THE 5/16-24 SOLENOID TERMINAL STUDS AND TIGHTEN THE TERMINAL NUT TO 35 LBS-IN. DO NOT OVER-TIGHTEN. SEAL CONNECTION WITH BATTERY TERMINAL SEALER AND REPOSITION BOOT.
- 5- INSTALL THE SOLENOID BATTERY POWER CABLE (NOT SHOWN) ON THE REMAINING 5/16-24 TERMINAL STUD AND TIGHTEN THE TERMINAL NUT TO 35 LBS-IN. INSTALL A LONGER SOLENOID GROUND CABLE TO THE LOWER 10-32 TERMINAL STUD USING A MINIMUM 14 AWG TYPE SXL OR GXL WIRE AND TIGHTEN THE TERMINAL NUT TO 15 LBS-IN. RE-INSTALL THE NEW GROUND CABLE TO THE MOTOR GROUND TERMINAL STUD AND TIGHTEN TERMINAL NUT TO 50 LBS-IN. SEAL CONNECTION WITH BATTERY TERMINAL SEALER AND REPOSITION BOOT.
- 6- INSTALL THE SOLENOID "ACTIVATION" WIRE (COIL POWER) CABLE TO THE UPPER 10-32 TERMINAL STUD AND TIGHTEN THE TERMINAL NUT TO 15 LBS-IN.
- 7- POSITION ALL CABLES SO THEY HAVE THE LEAST POSSIBILITY FOR DAMAGE.
- 8- CABLE BOOTS NOT SHOWN.



NOTE: SOLENOID IS SHOWN IN TYPICALLY RELOCATED POSITION AND ELECTRICAL CONNECTIONS HAVE BEEN MOVED ACCORDINGLY.

SOLENOID FASTENER TORQUE SPECIFICATION



ECO NO	REV	CHANGED FROM	BY	DATE	APVD	ECO NO	REV	CHANGED FROM	BY	DATE	APVD
3844	N	ADDED DRAWING OF DISCHARGE TUBE WITH 45° CUT	DMER	10-13-16	JLS	CFL3240	L	REMOVED 24V PART NUMBERS & INFO; REDESIGNED ELECTRICAL INSTALL. INFO	JRP	06-09-14	AJG
4114	P	REMOVED 3L BOSS	DMER	07-25-17	JLS						
4214	R	DRAIN TUBE LOCATION VERIFIED	DMER	10-16-17	JLS						
5474	T	ADDED ADDITIONAL SEALS. SEE EEM FOR DETAILS	KTN	06-16-21	TAM	3619	M	ADDED DETAIL VIEW, SW LABEL, NOTES 1 & 8; ADDED SOLENOID GND CABLE RUBBER BOOT; UPDATED SOLENOID RELOCATION INSTRUCTIONS	JSJ	12/17/15	AJG



HALE PRODUCTS, INC.
A Unit of IDEX Corporation
Ocala, FL 34475 USA

COPYRIGHT © 2021
NOT TO BE REPRODUCED OR USED IN
ANY MANNER WITHOUT THE WRITTEN
PERMISSION OF IDEX CORPORATION
DRAWN BY: KTN
CHECKED BY: KTN
DATE: 2-19-95
SCALE: FULL