

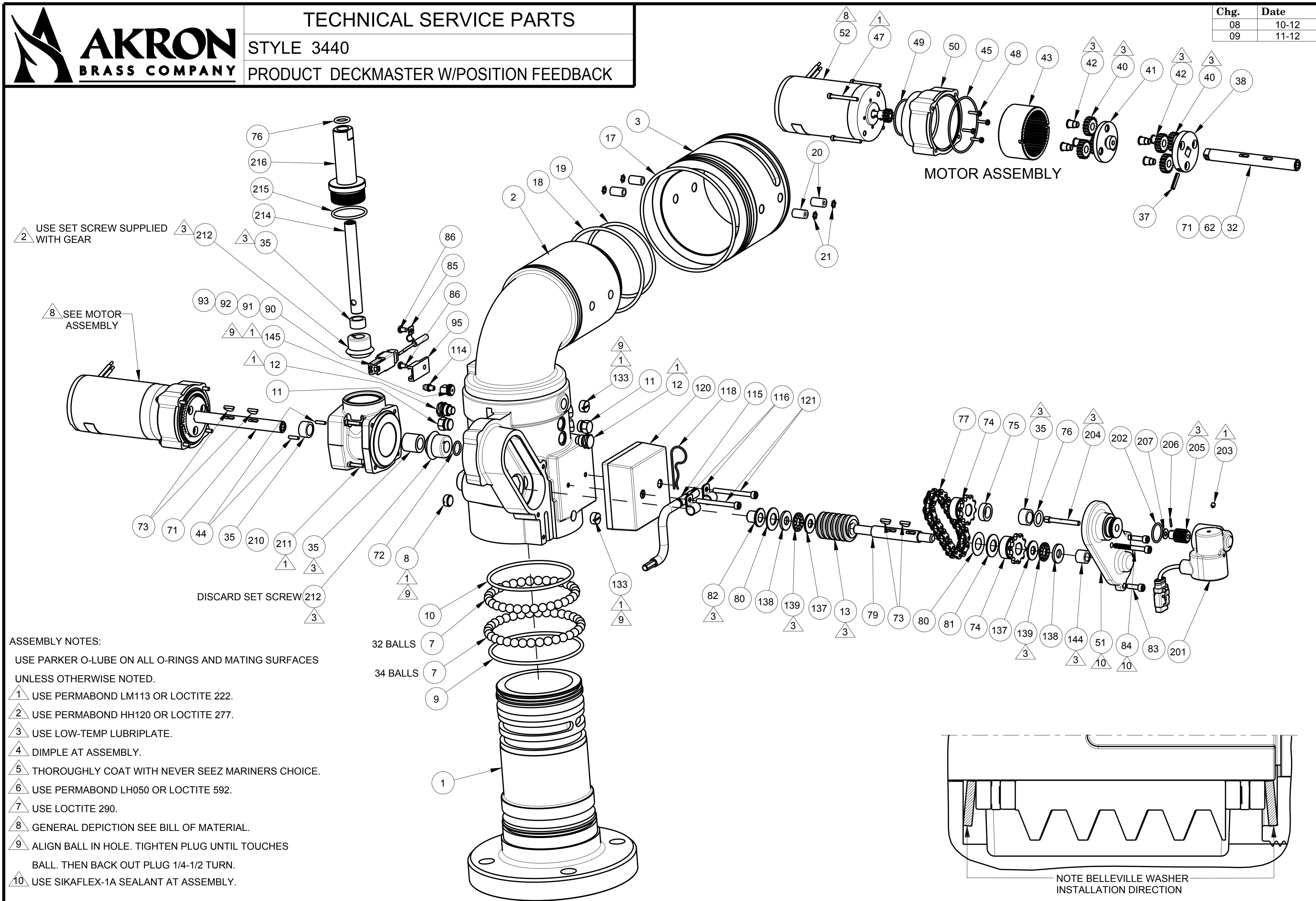


TECHNICAL SERVICE PARTS

STYLE 3440

PRODUCT DECKMASTER W/POSITION FEEDBACK

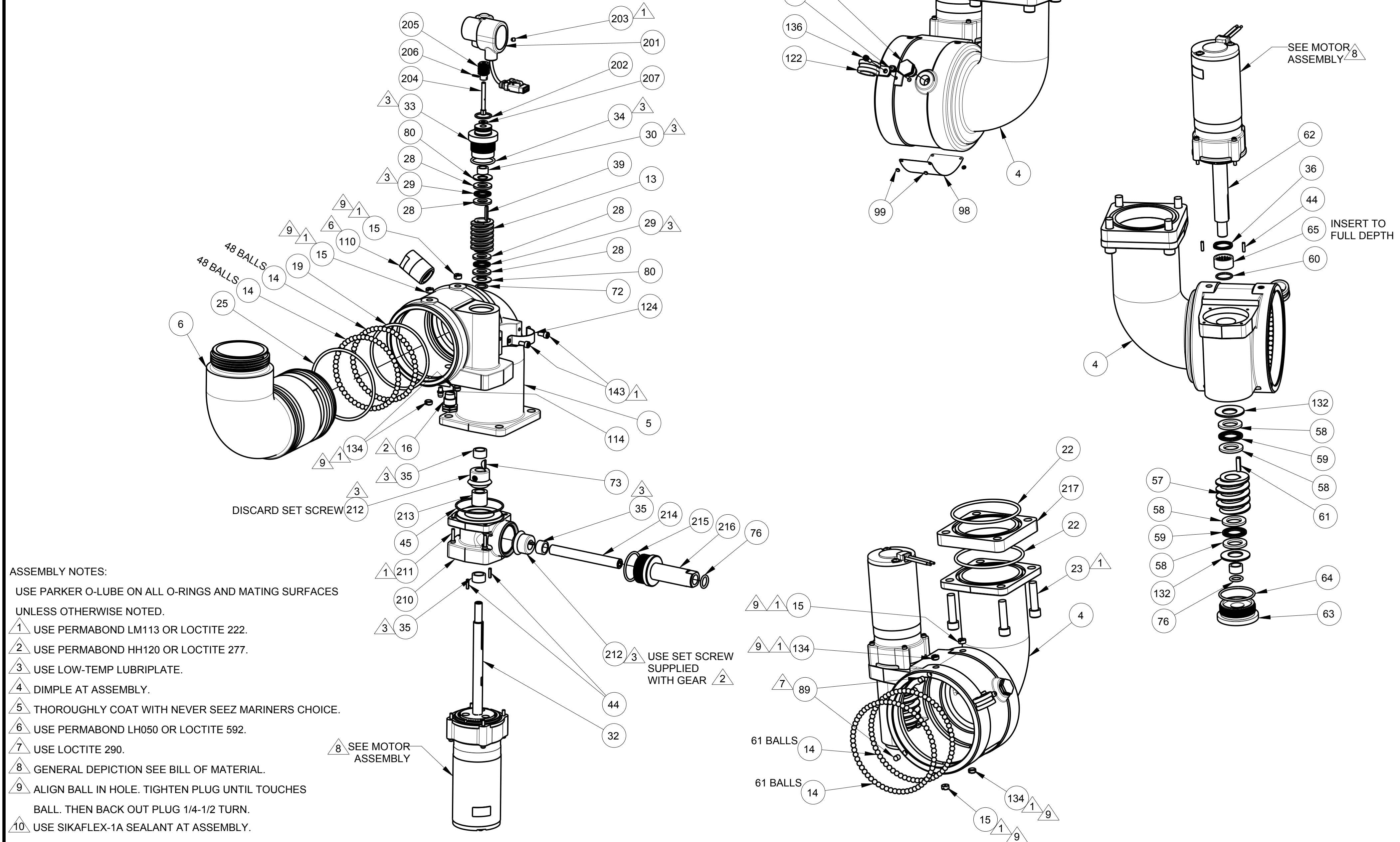
Chg.	Date
08	10-12
09	11-12



Parts List Sheet:

117180

WARRANTY AND DISCLAIMER: We warrant Akron Brass products for a period of five (5) years* after purchase against defects in materials or workmanship. Akron Brass will repair or replace product which fails to satisfy this warranty. Repair or replacement shall be at the discretion of Akron Brass. Products must be promptly returned to Akron Brass for warranty service. We will not be responsible for: wear and tear; any improper installation, use, maintenance or storage; negligence of the owner or user; repair or modification after delivery; failure to follow our instructions or recommendations; or anything else beyond our control. **WE MAKE NO WARRANTIES, EXPRESS OR IMPLIED, OTHER THAN THOSE INCLUDED IN THIS WARRANTY STATEMENT, AND WE DISCLAIM ANY IMPLIED WARRANTY OF MERCHANTABILITY OR FITNESS FOR ANY PARTICULAR PURPOSE.** Further, we will not be responsible for any consequential, incidental or indirect damages (including, but not limited to, any loss of profits) from any cause whatsoever. No person has authority to change this warranty. *Unless otherwise provided herein. Akron Brass industrial electronic components & the Severe-Duty Monitor have a one (1) year warranty. Weldon products have a one (1) year warranty (excluding consumable components). Select Weldon LED products carry a five (5) year warranty. For Weldon product returns call 800-989-2718. Honda products have the manufacturers' warranty and Akron Brass disclaims any warranty in respect of those products.



PHONE: 330.264.5678 or 800.228.1161 | FAX: 330.264.2944 or 800.531.7335 | www.akronbrass.com

WARRANTY AND DISCLAIMER: We warrant Akron Brass products for a period of five (5) years* after purchase against defects in materials or workmanship. Akron Brass will repair or replace product which fails to satisfy this warranty. Repair or replacement shall be at the discretion of Akron Brass. Products must be promptly returned to Akron Brass for warranty service. We will not be responsible for: wear and tear; any improper installation, use, maintenance or storage; negligence of the owner or user; repair or modification after delivery; failure to follow our instructions or recommendations; or anything else beyond our control. **WE MAKE NO WARRANTIES, EXPRESS OR IMPLIED, OTHER THAN THOSE INCLUDED IN THIS WARRANTY STATEMENT, AND WE DISCLAIM ANY IMPLIED WARRANTY OF MERCHANTABILITY OR FITNESS FOR ANY PARTICULAR PURPOSE.** Further, we will not be responsible for any consequential, incidental or indirect damages (including, but not limited to, any loss of profits) from any cause whatsoever. No person has authority to change this warranty. *Unless otherwise provided herein. Akron Brass industrial electronic components & the Severe-Duty Monitor have a one (1) year warranty. Weldon products have a one (1) year warranty (excluding consumable components). Select Weldon LED products carry a five (5) year warranty. For Weldon product returns call 800-989-2718. Honda products have the manufacturers' warranty and Akron Brass disclaims any warranty in respect of those products.

Parts List Sheet:

117180



TECHNICAL SERVICE PARTS

STYLE 3440

PRODUCT DECKMASTER W/POSITION FEEDBACK

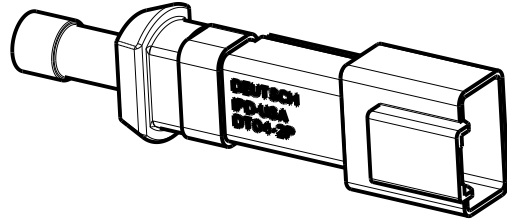
Chg.	Date
08	10-12
09	11-12

Find	Description	Item	QTY.
1	3"BASE	116459	1
2	ELBOW, INLET	116458	1
3	SLEEVE INNER	116491	1
4	ELBOW, LOWER MIDDLE	116464	1
5	ELBOW, UPPER MIDDLE	116461	1
6	ELBOW, OUTLET	116462	1
7	BALL, 3/8" BRASS	*	66
8	PLUG	742112	2
9	O-RING, 2-241	757210	1
10	O-RING, 2-238	757036	1
11	PLUG	744337	8
12	STOP	769498	2
13	GEAR, WORM	718273	2
14	BALL, 1/4" BRASS	**	218
15	PLUG - WITH HOLE	742023	4
16	STOP, VERTICAL	769596	2
17	O-RING, 2-247	757078	1
18	O-RING 2-240	757017	1
19	O-RING, 2-236	757035	2
20	PIN	741064	4
21	RETAINER	756111	4
22	O-RING, 2-237	757081	2
23	SCREW, SOCKET HEAD CAP 3/8 -16 x 1-1/2"	765120	4
25	O-RING, 2-239	757222	1
28	WASHER, THRUST	784121	4
29	BEARING, NEEDLE	703453	2
30	BEARING	704393	1
32	SHAFT, ROTATION	769938	1
33	CAP, BEARING	119820	1
34	O-RING, 2-121	757329	1
35	BEARING, NEEDLE ROLLER	704395	7
36	SPRING, SPIRAWAVE	769592	1
37	PIN, GROOVE	***	3
38	CARRIER, OUTPUT	***	3
39	KEY, SPECIAL	727044	1
40	GEAR, PLANET	***	18
41	PLATE, CARRIER	***	3
42	RIVET, SHORT	***	18
43	GEAR, INTERNAL ELEVATION	718164	3
44	PIN, ROLL	744288	6
45	O-RING, 2-036	757312	5
47	SCREW, SOCKET HEAD CAP 6-32 x 1-3/8"	767132	12
48	SCREW, SOCKET HEAD CAP W/PATCH 6-32 x 1/2"	765052	12
49	O-RING, 2-029	757056	3
50	HOUSING, GEARBOX	109320	3
51	PLATE, COVER	119821	1
52	MOTOR, 12V U2 DEUTSCH PLUG (SEE ILLUSTRATION THIS SHEET)	34911013	3
52	MOTOR, 24V U2 DEUTSCH PLUG (SEE ILLUSTRATION THIS SHEET)	34911007	3
52	MOTOR, 12V ITT PLUG (SEE ILLUSTRATION THIS SHEET)	35781082	3
52	MOTOR, 24V ITT PLUG (SEE ILLUSTRATION THIS SHEET)	35781101	3
57	GEAR, BOSTON WORM	784129	1
58	WASHER, THRUST	784130	4

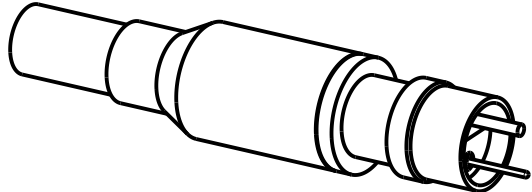
Find	Description	Item	QTY.
59	BEARING, ROLLER THRUST	703522	2
60	O-RING, 2-018	757042	1
61	KEY, SQUARE 3/16 x 3/4"LG	727046	1
62	SHAFT, VERTICAL	769937	1
63	CAP, BEARING	116493	1
64	O-RING, 2-131	757058	1
65	BEARING, NEEDLE	703523	1
71	SHAFT, OUTPUT	769939	1
72	O-RING, 2-014	757041	2
73	KEY, WOODRUFF	727025	5
74	SPROCKET	769499	2
75	SPACER	769495	1
76	O-RING, 2-112	757313	4
77	CHAIN	35780001	1
79	SHAFT, ROTATION	769525	1
80	SPRING, BELLEVILLE	769276	4
81	SHIM	769494	2
82	BUSHING, ROTATION	703461	1
83	SCREW, SOCKET HEAD CAP LOCWELL 10-24 x 5/8"LG	765100	2
84	SCREW, SOCKET HEAD CAP 10-24 x 1-5/8"	763035	1
85	CLAMP, MAGNET	707398	1
86	SCREW, PHILLIPS PAN HEAD #8-32 x 1/4"	765208	3
89	MAGNET, RARE EARTH	731081	2
90	SWITCH, HAMLIN	#	1
91	RECEPTACLE, DEUTSCH	#	1
92	CONTACT PIN, DEUTSCH	#	2
93	WEDGE LOCK, DEUTSCH	#	1
95	MOUNTING CLIP, DEUTSCH	704589	1
98	TAG ID	773303	1
99	NAIL	736052	4
110	VALVE, DRAIN	34330009	1
114	FITTING, GREASE	713191	4
115	HANDLE, OVERRIDE	721291	1
116	CLAMP, CABLE	707189	2
118	CLIP, HAIRPIN COTTER	744339	1
120	HARNESS, WIRING W/POS FEEDBACK U1	721457	1
120	HARNESS, WIRING W/POS FEEDBACK U2	721559	1
121	SCREW, SOCKET HEAD CAP #10-24 x 2"	763077	2
122	CLAMP, CABLE	707507	1
124	CLAMP, STRAP	707396	1
130	PACKING LIST/INSTRUCTIONS	119835	1
132	SPRING, BELLEVILLE	769605	2
133	PLUG - WITH HOLE	742123	2
134	PLUG	744394	4
136	SCREW, SOCKET HEAD CAP NYLON PATCH #8-32 x 1/2"	765155	1
137	WASHER, BEARING	784114	2
138	WASHER, BEARING	784113	2
139	BEARING, THRUST ROLLER	704437	2
143	SCREW, SOCKET HEAD CAP #10-24 x 3/8"	765016	2
144	BEARING	704941	1

Find	Description	Item	QTY.
145	PLUG SWIVEL	742143	1
201	SENSOR ASSY/POTTED S/A W/PLUG F/FIREFOX	34630228	2
202	O-RING, 2-018	757042	2
203	SCREW, SOCKET HEAD SET CUP POINT #8-32 x 3/16"	765042	4
204	SHAFT, POTTED HEX END	769641	2
205	GEAR, WORM	785021	2
206	PIN, ROLL	744341	2
207	WASHER, #10	784072	2
210	HOUSING, OVERRIDE	118598	2
211	SCREW, SOCKET HEAD CAP #6-32 x 5/8"	765179	8
212	GEAR, MITER	718185	4
213	COLLAR	707433	2
214	STUB, SHAFT	769744	2
215	O-RING, 2-126	757311	2
216	ADAPTER, GEARBOX	120026	2
217	PLATE, SPACER	120410	1
	CONTROL BOX W/SWITCH GUARD (Not Shown)	34400041	1
	12/24V PC BOARD (Not Shown)	34400054	1
	TETHER KIT (Not Shown)	34400019	1

- * Packet of 50 Ball Bearings - Pn. 109342
- ** Packet of 50 Ball Bearings - Pn. 109041
- *** For items 37, 38, 40, 41, 42 order repair kit 34400209
- # For items 90, 91, 92, 93 order repair kit 34400003



DEUTSCH CONNECTOR



ITT CONNECTOR

PHONE: 330.264.5678 or 800.228.1161 | FAX: 330.264.2944 or 800.531.7335 | www.akronbrass.com

WARRANTY AND DISCLAIMER: We warrant Akron Brass products for a period of five (5) years* after purchase against defects in materials or workmanship. Akron Brass will repair or replace product which fails to satisfy this warranty. Repair or replacement shall be at the discretion of Akron Brass. Products must be promptly returned to Akron Brass for warranty service. We will not be responsible for: wear and tear; any improper installation, use, maintenance or storage; negligence of the owner or user; repair or modification after delivery; failure to follow our instructions or recommendations; or anything else beyond our control. **WE MAKE NO WARRANTIES, EXPRESS OR IMPLIED, OTHER THAN THOSE INCLUDED IN THIS WARRANTY STATEMENT, AND WE DISCLAIM ANY IMPLIED WARRANTY OF MERCHANTABILITY OR FITNESS FOR ANY PARTICULAR PURPOSE.** Further, we will not be responsible for any consequential, incidental or indirect damages (including, but not limited to, any loss of profits) from any cause whatsoever. No person has authority to change this warranty. *Unless otherwise provided herein. Akron Brass industrial electronic components & the Severe-Duty Monitor have a one (1) year warranty. Weldon products have a one (1) year warranty (excluding consumable components). Select Weldon LED products carry a five (5) year warranty. For Weldon product returns call 800-989-2718. Honda products have the manufacturers' warranty and Akron Brass disclaims any warranty in respect of those products.

Parts List Sheet:

117180