

NOTES:

USE PARKER O-LUBE ON ALL O-RINGS
AND ALL MATING SURFACES (EXCEPT AS NOTED)

- ⚠️ ADJUST TO BALANCE REACTION FORCE AT RATED FLOW
- ⚠️ ADJUST (ITEM 427) UNTIL ALL CLEARANCE IS
GONE AND ITEM 399 STILL TURNS FREELY.
- ⚠️ USE PERMABOND LM113 OR LOCTITE 222 AT ASSEMBLY
- ⚠️ USE PERMABOND HH120 OR LOCTITE 277 AT ASSEMBLY

- ⚠️ USE LOW-TEMP LUBRIPLATE AT ASSEMBLY
- ⚠️ SCREW ITEM 455 INTO 499 UNTIL IT STOPS (3/4")
- ⚠️ OPERATING PRESSURE: 125 PSI (8.6 BAR)
- ⚠️ DIMENSIONS AND WEIGHTS GIVEN ARE APPROXIMATE
- ⚠️ ITEMS 398 AND 408 SHALL BE ALIGNED
USING ASSEMBLY FIXTURE DT11696

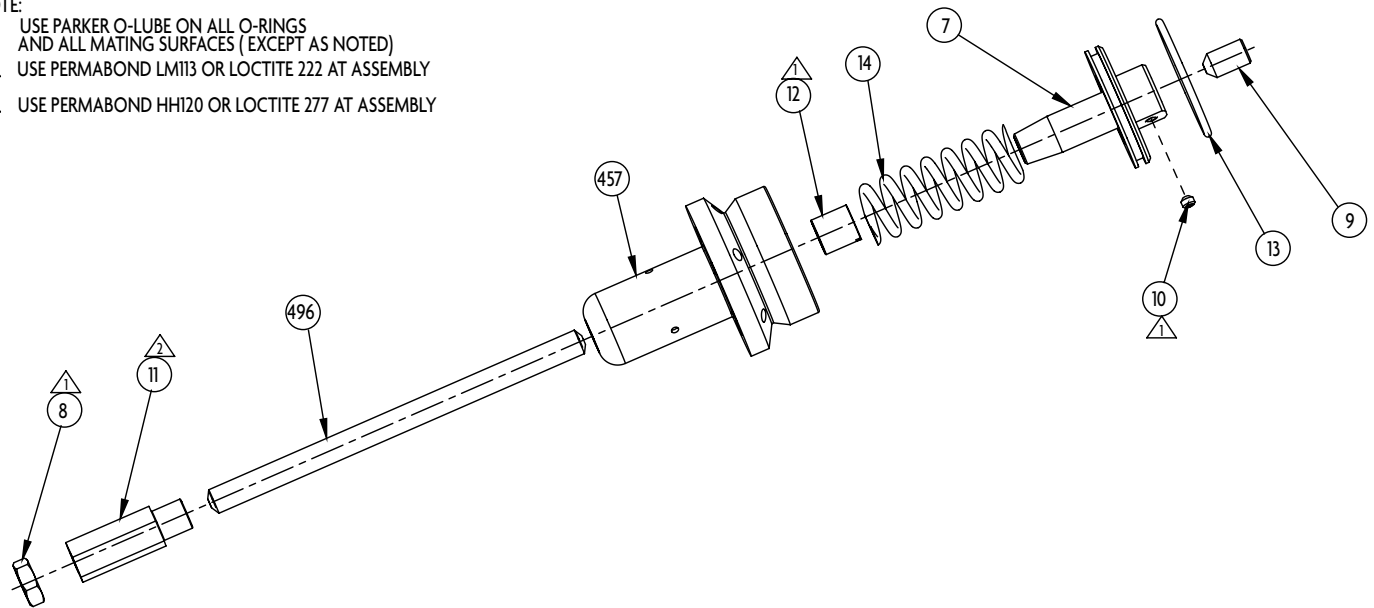
- ⚠️ TIGHTEN CONE POINT SET SCREW BETWEEN
TWO BALL BEARINGS UNTIL IT BOTTOMS OUT
IN SWIVEL PLUG HOLE (SWIVEL SHOULD BE
FIXED). THEN BACK OUT APPROX.
1 TURN UNTIL SWIVEL TURNS SMOOTHLY. THEN
STAKE FIRST THREAD TO PREVENT SCREW
FROM BACKING OUT.

- ⚠️ DIMPLE AT ASSEMBLY
- ⚠️ STAMP STYLE NUMBER, SERIAL
NUMBER, 1000/2000 LPM RATED FLOW
AND 8.6 BAR RATED PRESSURE AND
"T" AFTER "PSI" TO DENOTE TOTAL PRESSURE

Baffle Subassembly

NOTE:

- USE PARKER O-LUBE ON ALL O-RINGS
AND ALL MATING SURFACES (EXCEPT AS NOTED)
- △ USE PERMABOND LM113 OR LOCTITE 222 AT ASSEMBLY
- △ USE PERMABOND HH120 OR LOCTITE 277 AT ASSEMBLY



ITEM	DESCRIPTION	PART NUMBER	QTY
16	NAIL GRIP	736052	4
74	1000/2000LPM BAFFLE S/A		1
90	HEX HEAD CAP SCREW	761050	6
326	STUD	770314	4
327	NUT	735081	4
328	WASHER	784165	4
329	ACORN NUT	735082	4
336	SET SCREW	765071	2
374	SET SCREW	765002	1
398	COLLAR	104326	1
399	BELL CRANK	104327	1
400	LOWER BLADE	109781	1
401	UPPER BLADE	109782	1
404	CAM ADJUSTMENT	707337	1
408	FOAM TUBE ADAPTER	104321	1
409	FOAM TUBE	122904	1
427	SHOULDER BOLT	703471	1
428	SHOULDER BOLT	765181	6
429	RIVET	754053	4
431	WASHER	784118	5
432	SET SCREW	765022	1
433	BEARING	704235	4
454	THREADED ROD	121984	2
455	ROD INSERT	753047	1
460	NUT	734096	1
495	INLET	121097	1
499	PATTERN ROD	116014	1
501	SWIVEL PLUG	742023	1
502	BALL	**	38
527	BRACKET	121109	1

ITEM	DESCRIPTION	PART NUMBER	QTY
528	CLAMP	116128	1
531	SCREW	765198	1
532	SCREW	763042	2
534	SWIVEL 2.5 NH †	101420	1
535	GASKET	717043	1
ACTUATOR S/A			
73	12V UI	36230007	1
73	24V UI	36230008	1
73	12V U2	36232003	1
73	24V U2	36232004	1
MOTOR S/A			
	UI 12V	50770028	
	UI 24V	50770029	
	U2 12V	33560006	
	U2 24V	33560008	
1000/2000 LPM BAFFLE S/A			
7	CAP NUT	121099	1
8	HEX NUT	734099	1
9	SCREW	765226	1
10	SCREW	765008	1
11	COLLAR	121096	1
12	BAFFLE STOP	108373	1
13	O-RING 2-227	757289	1
14	SPRING	768245	1
457	BAFFLE CUP	122902	1
496	STEM	769829	1

† For other threads, order by description and thread size (ODM & TPI) or thread code.

** Packet of 50 ball bearings - P\N 109041