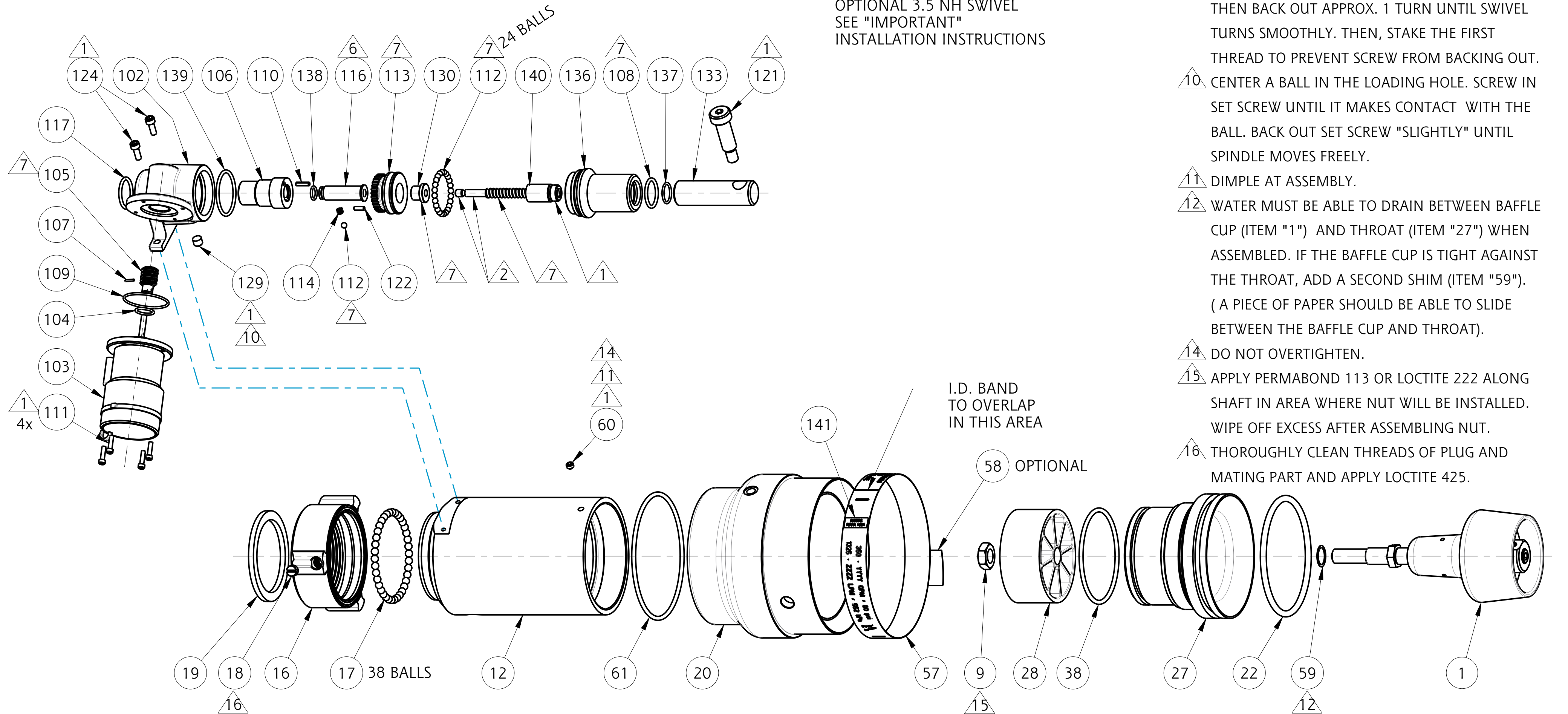


"IMPORTANT" INSTALLATION INSTRUCTIONS  
The Style 5177 with 3 1/2" swivel must be locked in place as follows:  
1. Thread the nozzle onto the monitor outlet.  
2. Rotate the motor into required location.  
3. Tighten the socket head set screw in the side of the swivel using a 3/16" hex wrench.  
4. Plug in motor connector.

MAXIMUM OPERATING PRESSURE: 200 PSI.  
FLOW RATING: 250-1000 OR 250-1250 GPM AT 80 PSI.

WARNING:  
The electrical control system must incorporate a current limiting circuitry set for a minimum of 3 amps for 12 volts (1.5 amps for 24 volts).  
Without circuitry set, motor may become inoperable if stalled during operation.



- ASSEMBLY NOTES:
- USE PARKER O-LUBE ON ALL O-RINGS AND MATING SURFACES UNLESS OTHERWISE NOTED.
- 1 USE PERMABOND #LM-113 OR LOCTITE #222.
- 2 USE PRIMER T AND PERMABOND HH120 OR LOCTITE 277.
- 6 TORQUE TO 35-45 IN-LBS.
- 7 USE LOW-TEMP LUBRIPLATE.
- 8 GREASE BODY FACE (ITEM #12) AND O-RING (ITEM #21) WITH PARKER O-LUBE.
- 9 TIGHTEN CONE POINT SET SCREW BETWEEN TWO BALL BEARINGS UNTIL IT BOTTOMS OUT IN SWIVEL PLUG HOLE (SWIVEL SHOULD BE FIXED). THEN BACK OUT APPROX. 1 TURN UNTIL SWIVEL TURNS SMOOTHLY. THEN, STAKE THE FIRST THREAD TO PREVENT SCREW FROM BACKING OUT.
- 10 CENTER A BALL IN THE LOADING HOLE. SCREW IN SET SCREW UNTIL IT MAKES CONTACT WITH THE BALL. BACK OUT SET SCREW "SLIGHTLY" UNTIL SPINDLE MOVES FREELY.
- 11 DIMPLE AT ASSEMBLY.
- 12 WATER MUST BE ABLE TO DRAIN BETWEEN BAFFLE CUP (ITEM "1") AND THROAT (ITEM "27") WHEN ASSEMBLED. IF THE BAFFLE CUP IS TIGHT AGAINST THE THROAT, ADD A SECOND SHIM (ITEM "59"). (A PIECE OF PAPER SHOULD BE ABLE TO SLIDE BETWEEN THE BAFFLE CUP AND THROAT).
- 14 DO NOT OVERTIGHTEN.
- 15 APPLY PERMABOND 113 OR LOCTITE 222 ALONG SHAFT IN AREA WHERE NUT WILL BE INSTALLED. WIPE OFF EXCESS AFTER ASSEMBLING NUT.
- 16 THOROUGHLY CLEAN THREADS OF PLUG AND MATING PART AND APPLY LOCTITE 425.





TECHNICAL SERVICE PARTS	
STYLE	5177
PRODUCT	1250 GPM ELECTRIC AKROMATIC

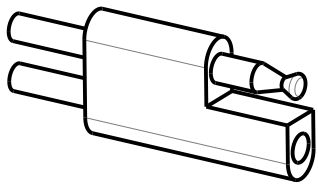
IF AN ITEM IS NOTED AS "NOT FIELD REPAIRABLE", OR YOU WISH TO RETURN AN ITEM TO AKRON BRASS FOR SERVICE PLEASE GO ONLINE TO, **ONLINEREPAIR.AKRONBRASS.COM**

Chg.	Date
17	07-22
18	09-22

Find		Description	Item	QTY
1	#	BAFFLE ASSEMBLY - 1250GPM	51600001	1
1	#	BAFFLE ASSEMBLY - 500GPM	51600045	1
1	#	BAFFLE ASSEMBLY - 750GPM	51600021	1
1	#	BAFFLE ASSEMBLY - 1000GPM	51600002	1
9	I,J	NUT HEX NYLOK 1/2-13	-	1
12		BODY	120054	1
16	**	SWIVEL - 2 1/2"	101420	1
16	**	SWIVEL - 3 1/2"	109525	1
17	A,C	BALL STAINLESS STEEL 1/4"OD (2 1/2" SWIVEL)	-	38
17	A,C	BALL STAINLESS STEEL 1/4"OD (3 1/2" SWIVEL)	-	39
18	C	PLUG SWIVEL	-	1
19	C	GASKET (2 1/2" SWIVEL)	-	1
19	C	GASKET (3 1/2" SWIVEL)	-	1
20	I,J	SLEEVE PATTERN	126552	1
21	C	O-RING 2-149 (3 1/2" SWIVEL)	-	1
22	C,I,J	O-RING 2-344	-	1
27		THROAT	119703	1
28		SHAPER STREAM	119705	1
38	C	O-RING 2-235	-	1
40		SCREW SOCKET HEAD CONE POINT SET 1/4-20 x 1/2"	765186	1
57	I	BAND ID 1000GPM @ 80PSI	803466	1
57	J	BAND ID 1250GPM @ 80PSI	803465	1
58		TAG CE	773604	1
59		SHIM	-	2
60		SCREW ALLEN HEAD CUP POINT SET 1/4-20 x 3/16"	765008	1
61	C,I,J	O-RING 2-244	-	1
102	D	HOUSING PATTERN ACTUATOR	119498	1
103		12V MOTOR ASSEMBLY WITH SPEED CLIP	50770028	1
103		24V MOTOR ASSEMBLY WITH SPEED CLIP	50770029	1
103		12V MOTOR ASSEMBLY WITH DEUTSCH CONNECTOR	33560006	1
103		24V MOTOR ASSEMBLY WITH DEUTSCH CONNECTOR	33560008	1
104	C,*	O-RING 2-015	-	1
105	D,*	WORM PATTERN ACTUATOR	-	1
106	D	COLLAR OVERRIDE	119500	1
107	*	PIN ROLL 1/16" x 3/8"	-	1
108	C,D	O-RING 2-118	-	1
109	C,*	O-RING 2-029	-	1
110	D	PIN ROLL 1/8" x 1/2"	744288	1

Find		Description	Item	QTY
111	*	SCREW SOCKET HEAD CAP 6-32 x 1/2"	-	4
112	B,C,D	BALL STAINLESS STEEL 3/16"	-	25
113	D,K	GEAR OVERRIDE ACTUATOR	-	1
114	D	SPRING DETENT	768283	1
116	D,K	SHAFT OVERRIDE	-	1
117	C,D	O-RING 2-119	-	1
121	D	SCREW SOCKET HEAD SHOULDER 1/2" DIA. x 1-1/4" LEN.	767158	1
122	D	KEY	727050	1
124	D	SCREW SOCKET HEAD CAP 10-24 x 5/8"	765028	2
129	D	SCREW SOCKET HEAD FLAT POINT 5/16-24 x 1/4"	765134	1
130	D	HUB OVERRIDE	721547	1
133	D	HOUSING BALL SCREW	119704	1
136	D	TUBE GUIDE	118253	1
137	C,D	O-RING 2-016	-	1
138	C,D	O-RING 2-012	-	1
139	C,D	O-RING 2-127	-	1
140	D,K	SCREW FREE WHEELING BALL	-	1
141		LABEL NFPA 1964	729181	1
A		KIT OF 50 STAINLESS STEEL 1/4" DIA.	123074	
B		KIT OF 50 STAINLESS STEEL BALLS 3/16" DIA.	121874	
C		FIELD SERVICE KIT O-RINGS/SEALS	90770001	
D		ACTUATOR SUB-ASSEMBLY	51770036	
E		MOTOR/ACTUATOR SUB ASSEMBLY: 12V SPEED CLIP	51770012	
F		MOTOR/ACTUATOR SUB ASSEMBLY: 24V SPEED CLIP	51770013	
G		MOTOR/ACTUATOR SUB ASSEMBLY: 12V DEUTSCH CONNECTOR	51772020	
H		MOTOR/ACTUATOR SUB ASSEMBLY: 24V DEUTSCH CONNECTOR	51772021	
I		737 FOAM TUBE CONVERSION KIT: 1000GPM	51770040	
J		737 FOAM TUBE CONVERSION KIT: 1250GPM	51770041	
K		OVERRIDE HUB ASSEMBLY REPAIR KIT	51770033	

\* ITEMS INCLUDED IN MOTOR ASSEMBLY FIND NUMBER 103.  
\*\* FOR OTHER THREADS ORDER BY DESCRIPTION AND THREAD SIZE.  
# INCLUDES ITEMS 9, 59

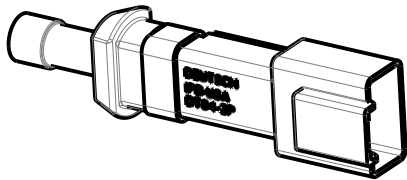
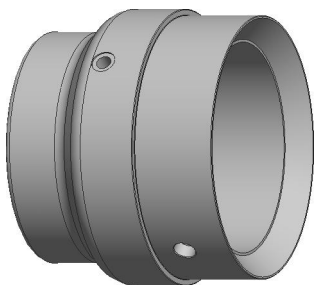


SPEED CLIP CONNECTOR

FIND 20 (P/N 119706)  
REQUIRES CONVERSION KIT  
TO FIT FOAM TUBE



FIND 20 (P/N 126552)  
NO CONVERSION KIT  
REQUIRED TO FIT FOAM TUBE



DEUTSCH CONNECTOR

PHONE: 800.228.1161 | [www.akronbrass.com](http://www.akronbrass.com)

WARRANTY AND DISCLAIMER\*: We warrant Akron Brass products for a period of five (5) years\* after purchase against defects in materials or workmanship. Akron Brass will repair or replace product which fails to satisfy this warranty. Repair or replacement shall be at the discretion of Akron Brass. Products must be promptly returned to Akron Brass for warranty service. We will not be responsible for: wear and tear; any improper installation, use, maintenance or storage; negligence of the owner or user; repair or modification after delivery; failure to follow our instructions or recommendations; or anything else beyond our control. WE MAKE NO WARRANTIES, EXPRESS OR IMPLIED, OTHER THAN THOSE INCLUDED IN THIS WARRANTY STATEMENT, AND WE DISCLAIM ANY IMPLIED WARRANTY OF MERCHANTABILITY OR FITNESS FOR ANY PARTICULAR PURPOSE. Further, we will not be responsible for any consequential, incidental or indirect damages (including, but not limited to, any loss of profits) from any cause whatsoever. No person has authority to change this warranty. \*Unless otherwise provided herein. Akron Brass industrial electronic components & the Severe-Duty Monitor have a one (1) year warranty. Select Akron Brass handline nozzles and valves carry a ten (10) year warranty. Scene Star Lights carry a (6) year warranty. Weldon products have a two (2) year warranty from date of manufacture (excluding consumable components). Select Weldon LED products carry a five (5) year warranty. Honda products have the manufacturers' warranty and Akron Brass disclaims any warranty in respect of those products.  
© 2016 Akron Brass Company. All rights reserved. No portion of this can be reproduced without the express written consent of the Akron Brass Company.

Parts List Sheet:

119732