



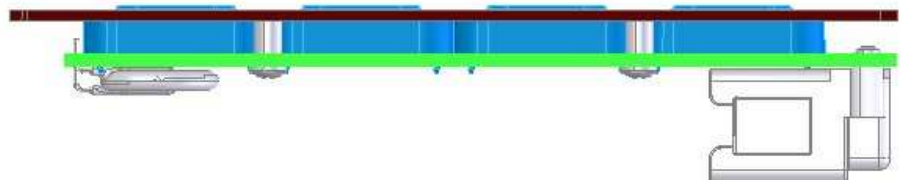
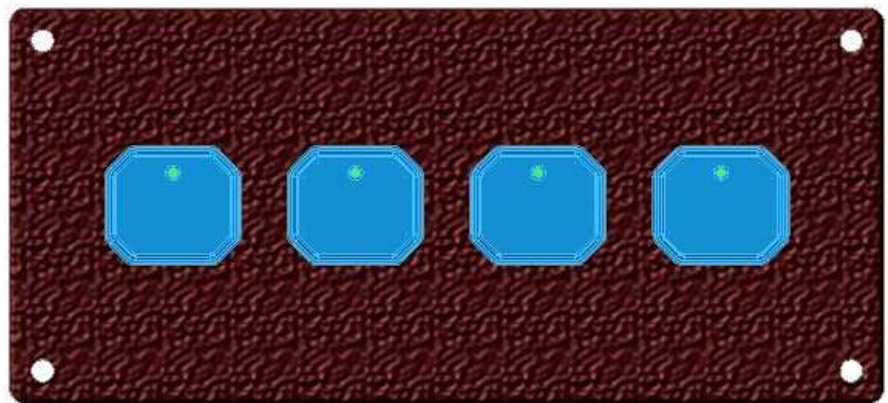
Blue Touch

6300-0400-00 Four Position
6300-0800-00 Eight Position

WWW.V-MUX.COM

Features

- Use with V-MUX
- Use with conventional wiring.
- Create your own legends on a laser printer
- Backlit
- Indicators for each button
- Switch 12v or GRD



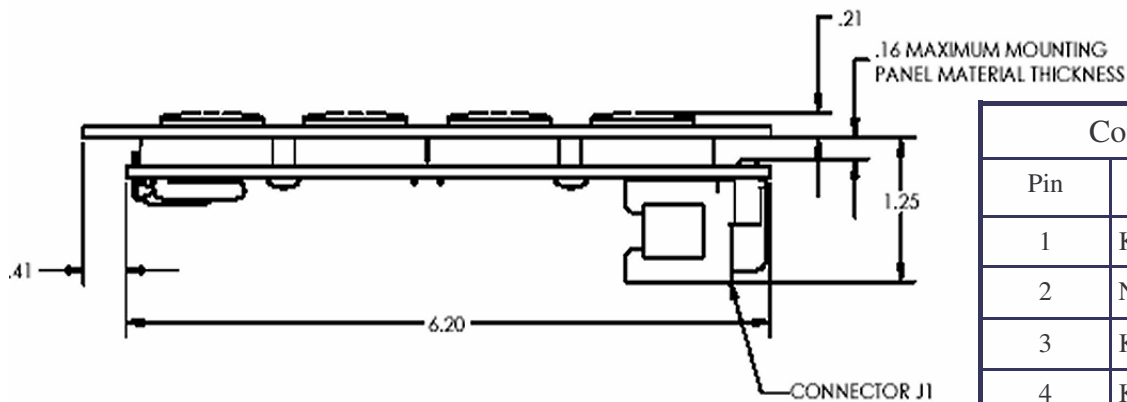
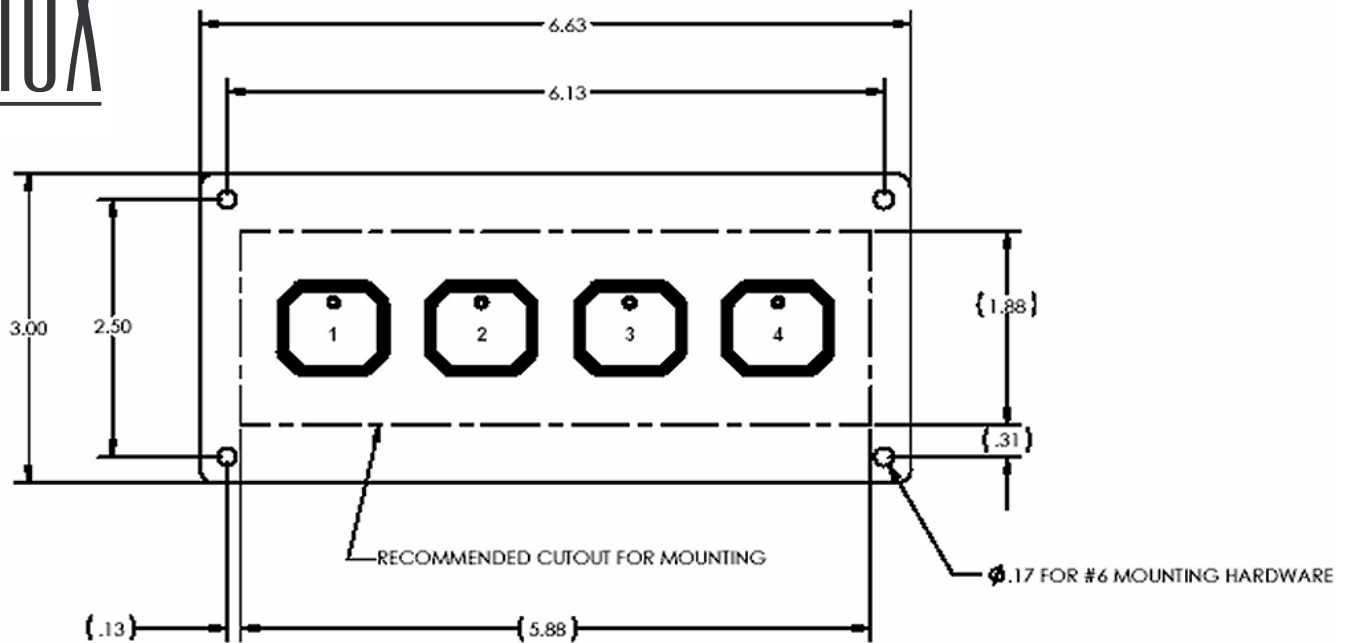
Blue Touch Switch Panels

Weldon has solved the age old problem of legends on switches. With “Blue Touch” panels the OEM can print their own legends on the fly; simply run one of our die-cut nylon sheets through your laser printer and peel-off each legend, then insert it behind the plastic cap. The light blue color of the rubber membrane combined with the blue backlighting creates the Blue Touch look

Weldon Your Gateway to the Future
800.989.2718

Technical Specifications

V-MUX™



Reference Only:

Obtain Customer Drawing before attempting to install Blue Touch.

C6300-0400-00

Connector Pin outs	
Pin	Description
1	Key 1 Indicator LED
2	Normally Open Key 1
3	Key 2 Indicator LED
4	Key 4 Indicator LED
5	Key 3 Indicator LED
6	+12 Volt DC Supply
7	Normally Open Key 4
8	Normally Open Key 3
9	Normally Open Key 2
10	Key Switch Common (GND or 12V)
11	LED Backlight (12 VDC)
12	Ground



800.989.2718 WWW.V-MUX.COM