

- NOTES:
- USE PARKER O-LUBE ON ALL O-RINGS AND MATING SURFACES UNLESS OTHERWISE NOTED.
- 1

USE PERMABOND HH120 OR LOCTITE 277
- 2

USE PERMABOND LM113 OR LOCTITE 222
- 3

CONTACT SHAFT, THEN BACK OFF 1/2 TURN
- 4

DIMPLE AT ASSEMBLY
- 5

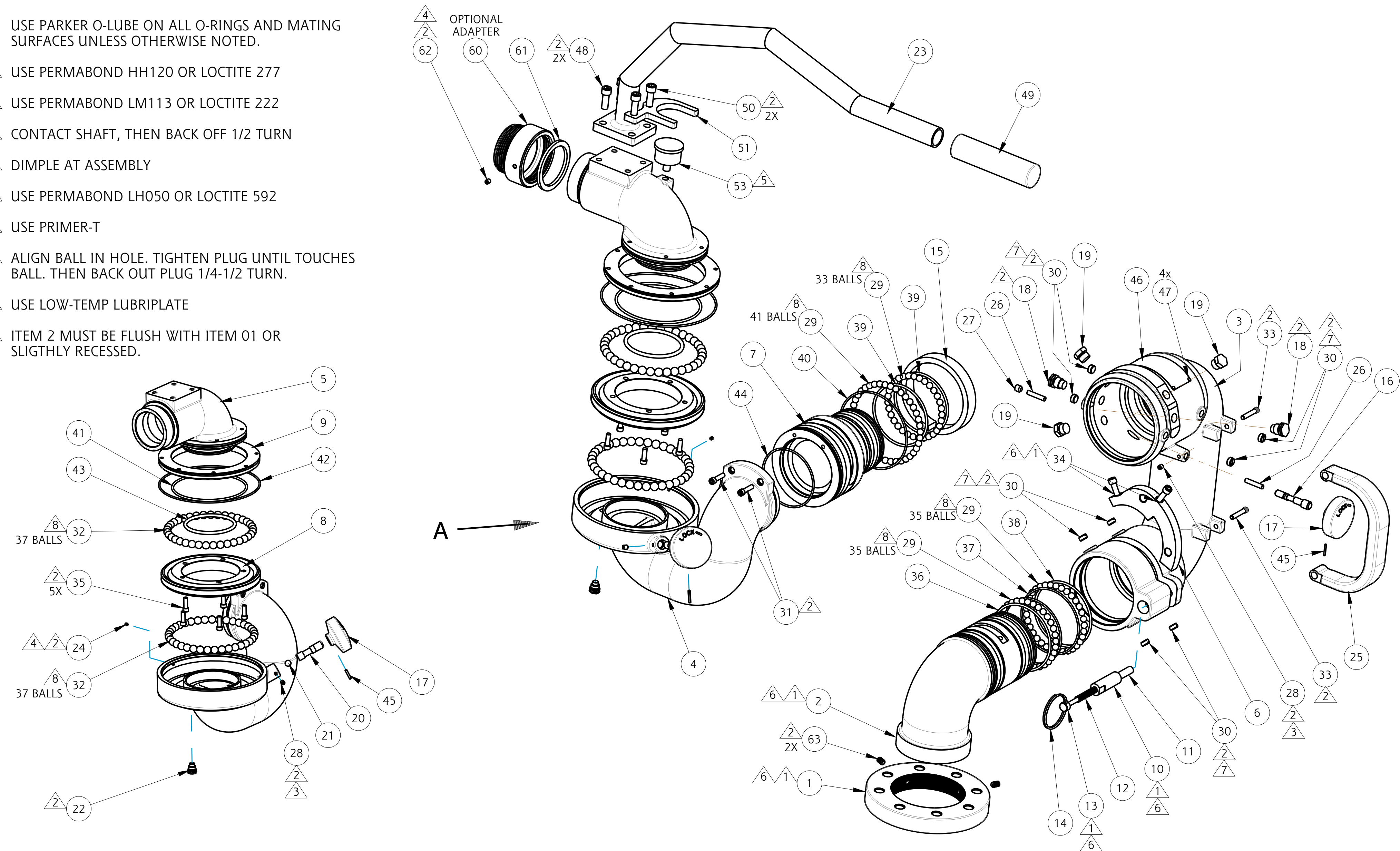
USE PERMABOND LH050 OR LOCTITE 592
- 6

USE PRIMER-T
- 7

ALIGN BALL IN HOLE. TIGHTEN PLUG UNTIL TOUCHES BALL. THEN BACK OUT PLUG 1/4-1/2 TURN.
- 8

USE LOW-TEMP LUBRIPLATE
- 9

ITEM 2 MUST BE FLUSH WITH ITEM 01 OR SLIGHTLY RECESSED.



VIEW IN DIRECTION OF ARROW A



TECHNICAL SERVICE PARTS			
STYLE 3432			
PRODUCT PLATFORM MONITOR			

IF AN ITEM IS NOTED AS "NOT FIELD REPAIRABLE", OR YOU WISH TO RETURN AN ITEM TO AKRON BRASS FOR SERVICE PLEASE GO ONLINE TO, **ONLINEREPAIR.AKRONBRASS.COM**

Chg.	Date
09	03-21
10	01-23

FIND		DESCRIPTION	ITEM	QTY
1		3" 150# FLANGE	120111	1
2		INLET ELBOW	120107	1
3		MAIN ELBOW	120108	1
4		MIDDLE ELBOW	123611	1
5		OUTLET ELBOW	120110	1
6		EYE FDNY	120114	1
7		INNER SLEEVE	123612	1
8		ROTATION JOINT	120113	1
9		RING BALL RETAINER	117690	1
10		PLUNGER HOUSING	721446	1
11		PLUNGER PIN	742155	1
12		PLUNGER SPRING	768366	1
13		PLUNGER SCREW	765237	1
14		SPLIT RING	756157	1
15		BRAKE BAND	120112	1
16		BRAKE SHAFT	769308	1
17		KNOB	109189	2
18		VERTICAL STOP	769596	2
19		EVEVATION PLUG	744397	3
20		BRAKE SHAFT	769748	1
21		BRAKE BALL	703211	1
22		STOP	769498	1
23	C	TILLER BAR	703648	1
24		SCREW 8-32 X 3/16	765225	1
25		HANDLE	108973	1
26		GROOVE PIN 1/4 X 1-1/4	741012	2
27		SCREW 3/8-16 X 3/8	765043	1
28		SCREW 1/4-20 X 1/4	765002	2
29	A	BALL BEARING 3/8"	-	144

FIND		DESCRIPTION	ITEM	QTY
30		PLUG SWIVEL	742112	8
31		SCREW 1/4-20 X 1	767003	2
32	B	BALL BEARING 1/4	-	74
33		HANDLE PIN	741036	2
34		SCREW 5/16-18 X 1	766036	2
35		SCREW 1/4-20 X 3/4	765030	5
36		O-RING 2-242	757073	1
37		O-RING 2-155	757359	2
38		O-RING 2-241	757210	1
39		O-RING 2-239	757222	2
40		O-RING 2-158	757326	1
41		O-RING 2-250	757102	1
42		O-RING 2-166	757366	1
43		O-RING 2-339	757365	1
44		O-RING 88 MM ID X 3MM	757482	1
45		ROLL PIN	744066	2
46		ID TAG	773372	1
47		GRIP NAIL	736052	4
48	C	SCREW 3/8-16 X 1	767047	2
49	C	GRIP HANDLE	718251	1
50	C	SCREW 3/8-16 X 1-1/4	765154	2
51		GUAGE GUARD	718268	1
53		PRESSURE GUAGE 0-350psi	718322	1
60		OPTIONAL THREAD ADAPTER	104358	1
61		GASKET	717043	1
62		SCREW 1/4-20 X 1/4	765002	1
63		SET SCREW 5/16-18	765268	2
A		KIT OF 50 BALLS 3/8"	109342	
B		KIT OF 50 BALLS 1/4"	116252	
C		HANDLE WITH GRIP & SCREWS	34320007	

PHONE: 800.228.1161 | www.akronbrass.com

WARRANTY AND DISCLAIMER*: We warrant Akron Brass products for a period of five (5) years* after purchase against defects in materials or workmanship. Akron Brass will repair or replace product which fails to satisfy this warranty. Repair or replacement shall be at the discretion of Akron Brass. Products must be promptly returned to Akron Brass for warranty service. We will not be responsible for: wear and tear; any improper installation, use, maintenance or storage; negligence of the owner or user; repair or modification after delivery; failure to follow our instructions or recommendations; or anything else beyond our control. WE MAKE NO WARRANTIES, EXPRESS OR IMPLIED, OTHER THAN THOSE INCLUDED IN THIS WARRANTY STATEMENT, AND WE DISCLAIM ANY IMPLIED WARRANTY OF MERCHANTABILITY OR FITNESS FOR ANY PARTICULAR PURPOSE. Further, we will not be responsible for any consequential, incidental or indirect damages (including, but not limited to, any loss of profits) from any cause whatsoever. No person has authority to change this warranty. *Unless otherwise provided herein. Akron Brass industrial electronic components & the Severe-Duty Monitor have a one (1) year warranty. Select Akron Brass handline nozzles and valves carry a ten (10) year warranty. Scene Star Lights carry a (6) year warranty. Weldon products have a two (2) year warranty from date of manufacture (excluding consumable components). Select Weldon LED products carry a five (5) year warranty. Honda products have the manufacturers' warranty and Akron Brass disclaims any warranty in respect of those products.
© 2016 Akron Brass Company. All rights reserved. No portion of this can be reproduced without the express written consent of the Akron Brass Company.

Parts List Sheet:

123387

D43590