



## STYLE 1495 LADDER PIPE FOR ROUND RUNG OPERATING INSTRUCTIONS

This unit is equipped with a quick acting clamp which is adjustable to fit the rung spacing of any aerial ladder. It is pre-set at the plant to fit a rung spacing of 15-1/4" and it may be necessary to adjust the spacing to your ladder.

### PRODUCT RATINGS:

Maximum Flow 1000 GPM

Maximum Pressure 150 PSI

Do not exceed the following discharge pressure with straight tips.

<u>Tip Size</u>	<u>Pressure</u>
1-1/2"	100 PSI
1-3/4"	100 PSI
2"	70 PSI

Do not exceed 1000 GPM when using a fog nozzle.

### PRODUCT WARNINGS:

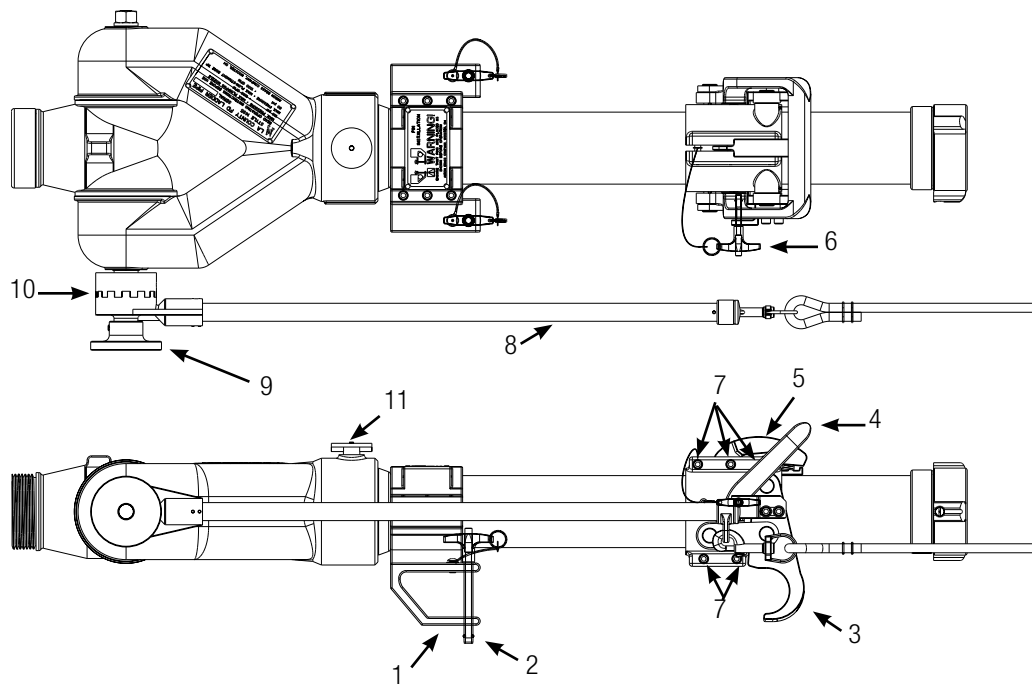
- ⚠ Warning:** Ensure the ladder being used has adequate structural strength to support the reaction force generated during operation.
- ⚠ Warning:** Read and follow the operating instructions before use.
- ⚠ Warning:** Use only for fire fighting by trained operators.
- ⚠ Warning:** Do not exceed the maximum pressure or flow ratings of the ladder pipe.
- ⚠ Warning:** Charge the unit slowly. Rapid charging may cause a pressure surge with the potential to cause injury or damage to the unit.
- ⚠ Warning:** Make sure the ladder pipe is pointed in a safe direction before flowing water.
- ⚠ Warning:** Read and follow the tip pressure and flows in the operating instructions before use.
- ⚠ Warning:** During freezing conditions the ladder pipe must be drained to prevent damage.
- ⚠ Warning:** Replace any tags on the monitor that have become worn or damaged.
- ⚠ Warning:** Ensure the ladder pipe fits securely onto the rungs and the safety pins are fully engaged before use.

## INSTALLATION INSTRUCTIONS:

1. Hook the upper clamp (1) over the top rung.
2. Install the two ball lock pins (2) into the upper clamp holes as shown.
3. Place the lower clamp (3) over the second rung.
4. Depress the locking handle (4) down until it snaps over the safety catch (5). **WARNING:** The adder pipe should fit securely onto the two rungs before operating. If not, the lower clamp assembly must be adjusted to provide a secure fit.
5. Install the safety pin (6) through the bracket and locking handle as shown.
6. To adjust for various rung spacing, the lower clamp assembly will need to be moved. Loosen the set screws (7). With the locking handle in the locked position, slide the entire clamp until it fits snugly against the rung. Unlock the locking handle and then slide the entire clamp assembly another 1/8". If necessary repeat this procedure until the unit locks into place securely. **CAUTION:** Be careful not to over-tighten. Finally, tighten the set screws (7). Do not over-tighten the middle screw that goes through the safety catch.
7. Test the safety catch operation to ensure proper locking action before putting the unit into service.

## OPERATING INSTRUCTIONS:

1. Once installed onto the ladder the elevation may be changed by raising or lowering the elevation handle (8).
2. To adjust the position of the elevation handle, loosen the locking knob (9) until the teeth on the handle bracket (10) can be disengaged and rotated into the desired position. Once positioned, tighten the locking knob.
3. The unit may be rotated side to side 15° either side of center. To rotate the unit, pull and rotate the rotation lock pin (11). To re-engage the rotation lock pin, rotate the knob until the web on the under side aligns with the slot in the housing. When the ladder pipe is rotated to its center position, the rotation lock pin will snap into place.



**Tested... Proven... Trusted.**

ISO 9001 REGISTERED COMPANY

PHONE: 330.264.5678 or 800.228.1161 | FAX: 330.264.2944 or 800.531.7335 | [akronbrass.com](http://akronbrass.com)

REVISED: 09/10

WARRANTY AND DISCLAIMER: We warrant Akron Brass products for a period of five (5) years after purchase against defects in materials or workmanship. Akron Brass will repair or replace product which fails to satisfy this warranty. Repair or replacement shall be at the discretion of Akron Brass. Products must be promptly returned to Akron Brass for warranty service.

We will not be responsible for: wear and tear; any improper installation, use, maintenance or storage; negligence of the owner or user; repair or modification after delivery; damage; failure to follow our instructions or recommendations; or anything else beyond our control. WE MAKE NO WARRANTIES, EXPRESS OR IMPLIED, OTHER THAN THOSE INCLUDED IN THIS WARRANTY STATEMENT, AND WE DISCLAIM ANY IMPLIED WARRANTY OF MERCHANTABILITY OR FITNESS FOR ANY PARTICULAR PURPOSE. Further, we will not be responsible for any consequential, incidental or indirect damages (including, but not limited to, any loss of profits) from any cause whatsoever. No person has authority to change this warranty.

© Akron Brass Company. 2010 All rights reserved. No portion of this can be reproduced without the express written consent of Akron Brass Company.