

1

2

3

4

ITEM NO.	PART NUMBER	DESCRIPTION	QTY.
1	602-SH	AC SCENE STARHOUSING	1
2	611-GP	HEAT SINK GAP PAD	2
3	611-HS_AC	HEAT SINK	2
4	633-CS	M4 X 8MM FLAT HEAD	20
5	634-CS	AC GROUND CAP SCREW	1
6	622-RT	18GA RING TERMINAL	1
7	636-IW	M4 GROUND LOCK WASHER	1
8	617-DM	120V AC SCENE STAR DRIVER BOARD	2
9	646-CS	AC DRIVER BOARD M4 FASTENER	8
10	649-FW	AC BOARD M4 WASHER	8
11	609-BS	BEZEL SEAL	1
12	187-LG	LED LENS	1
13	614-LF	BEZEL	1
14	609-RF	AC REFLECTOR	1
15	416-TB	TAMPER PROOF M4 SCREWS	6
16	627-DG	DIECUT SWIVEL GASKET	1
17	600-BX	SCENE STAR WIRE ROUTING BOX	1
18	375-SR	3/8" WATERTIGHT STRAIN RELIEF	1
19	617-CS	M616MM LED HANDLE CAP SCREW	2
20	629-MS	LED BROW BRACKET SPACER	2
21	625-SPRTN	SPARTAN BROW BRKT	2
22	630-WS	M6 WASHER	4
23	631-BS	M6-30MM BROW BRACKET SCREW	4

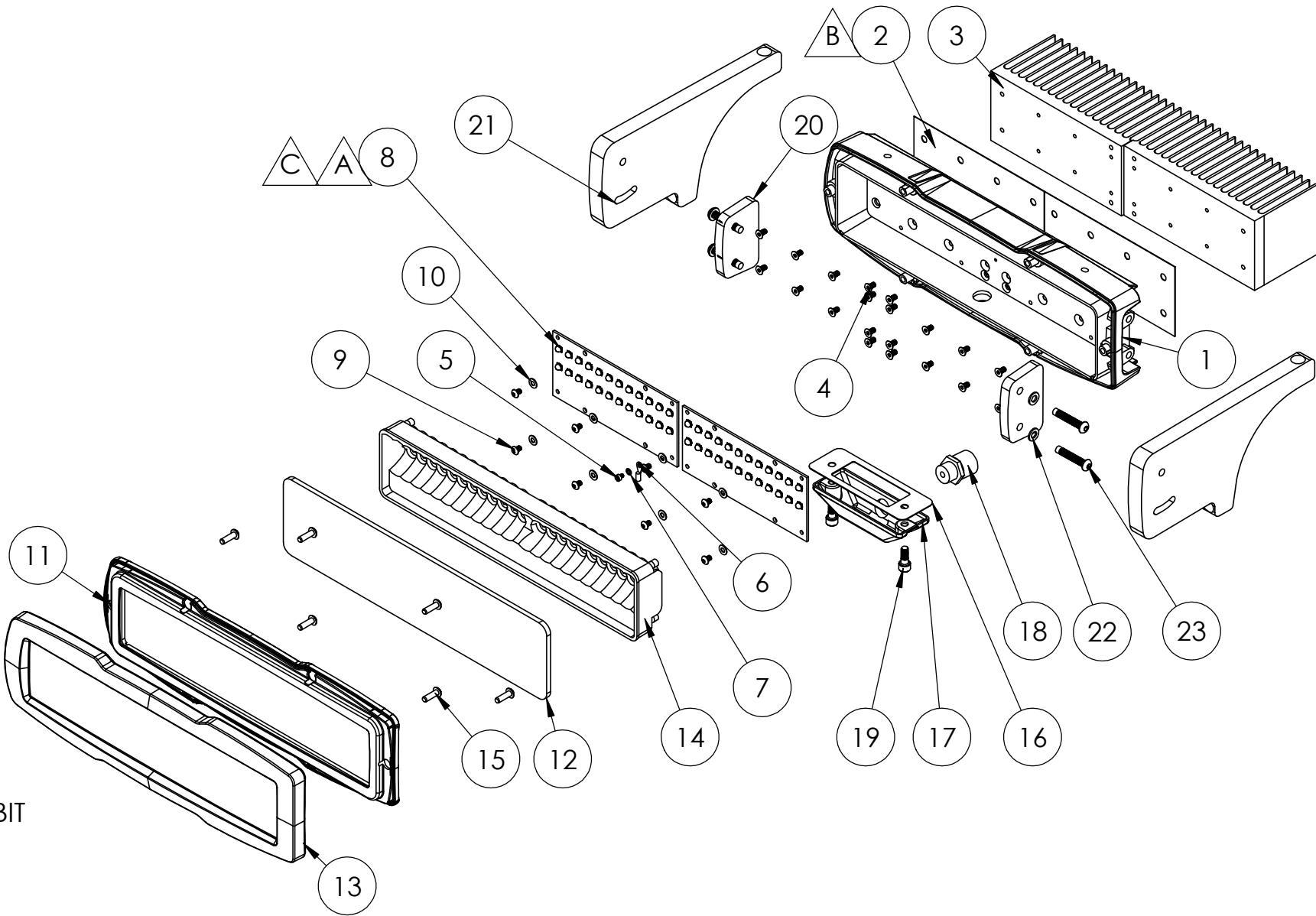
- A

APPLY THERMAL PASTE TO LED BOARD AND HOUSING
- B

ALL PLASTIC MUST BE REMOVED FROM GAP PADS
- C


USE LED BOARD ALLIGNMENT JIG DURING ASSEMBLY

REVISIONS				
ZONE	REV.	DESCRIPTION	DATE	APPROVED
	A	RELEASE FOR UL	4/25/12	



NOTES:

- 16-3 300V CABLE NOT SHOWN FOR CLARITY
- ITEM 15 REQUIRES 2.5MM ALLEN TAMPER RESISTANT BIT FOR REMOVAL
- SPARTAN CONFIGURATION SHOWN. ITEM 21 WILL CHANGE WITH DIFFERENT CABS

		<div>NOTICE: This document and the information hereon are confidential and are the EXCLUSIVE PROPERTY of AkronBrass Co., Wooster, Ohio and shall not be REPRODUCED or USED without the prior written consent of Akron Brass Co.</div>	<div>Drawing Notes: ALL of the following notes apply unless otherwise specified:</div> <div>1. DO NOT SCALE DRAWING</div> <div>2. ALL dimensions are in inches</div> <div>3. Tol on all fractions +/- 1/64</div> <div>4. Tol on 3 place decimals +/- .005</div> <div>5. Tol on 2 place decimals +/- .02</div> <div>6. Tol on all angles +/- 1/2 deg</div> <div>7. ALL inside corners to have .005-.035 fillets</div> <div>8. ALL outside corners to have .005-.015 chamfer or radius</div> <div>9. ALL machine surfaces to have 125 finish</div> <div>10. ALL castings to have 250 finish</div>	Material:	<div>A PREMIER FARNELL COMPANY WOOSTER, OHIO 44691 (330) 264-5678</div>	Designed By:		
	Drawn By:					CAF		
	Apprv'd By:							
	Plot Date:					4/25/2012		
	Drawing No: <div>ELSS-XLAC-BL</div>							
	Supersedes:							
	Scale: 1:5					Sheet(s): 1 OF 2		
Part Numbers(s):	Description(s):	Government I.D. No.: <div>00912</div>		Finish:	<div>Title: 120V AC SCENE STAR BROW LIGHT</div> <div>Product(s) EXTENDA-LITE</div> <div>Style(s) ELSS</div>			
				Specifications:				

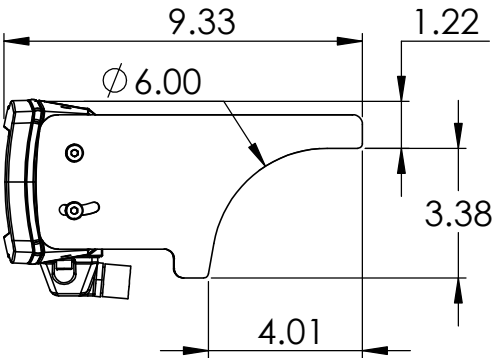
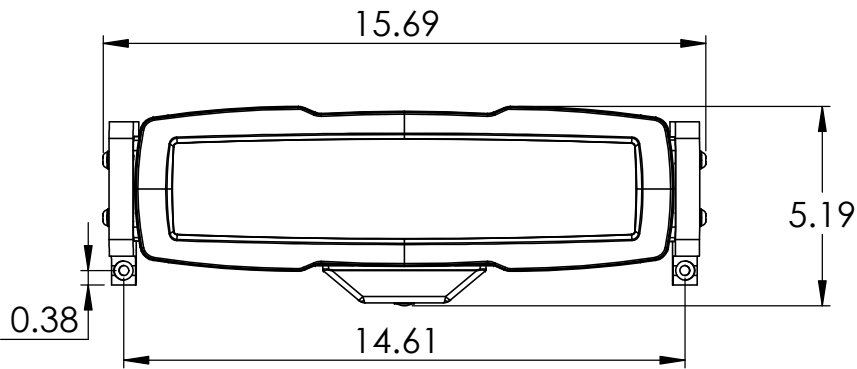
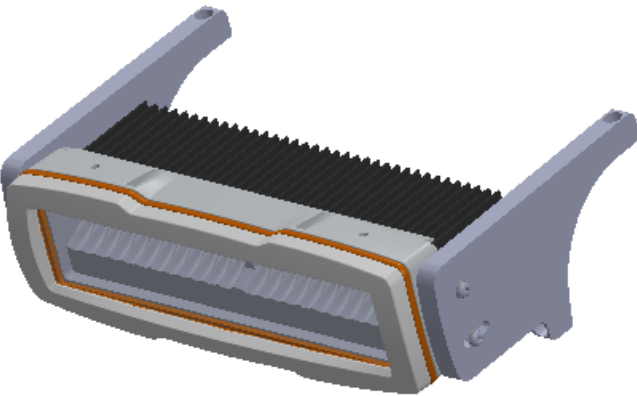
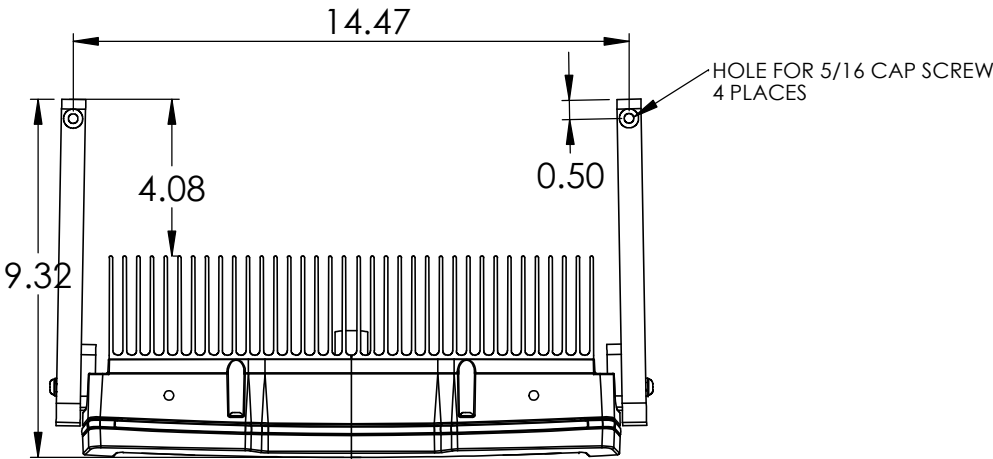
1

2

3

4


REVISIONS				
ZONE	REV.	DESCRIPTION	DATE	APPROVED
	A	RELEASE FO UL	4/25/12	



- NOTES:
1. WIRING NOT SHOWN FOR CLARITY
 2. THIS DRAWING IS FOR EVALUATION ONLY. ACTUAL PRODUCTION PRODUCT MAY VARY.

D

D

		NOTICE: This document and the information hereon are confidential and are the EXCLUSIVE PROPERTY of AkronBrass Co., Wooster, Ohio and shall not be REPRODUCED or USED without the prior written consent of Akron Brass Co.	Drawing Notes: ALL of the following notes apply unless otherwise specified: 1. DO NOT SCALE DRAWING 2. ALL dimensions are in inches 3. Tol on all fractions +/- 1/64 4. Tol on 3 place decimals +/- .005 5. Tol on 2 place decimals +/- .02 6. Tol on all angles +/- 1/2 deg 7. ALL inside corners to have .005-.035 fillets 8. ALL outside corners to have .005-.015 chamfer or radius 9. ALL machine surfaces to have 125 finish 10. ALL castings to have 250 finish	Material:	 A PREMIER FARNELL COMPANY WOOSTER, OHIO 44691 (330) 264-5678	Designed By:		
						Drawn By:	CAF	
						Apprv'd By:		
						Plot Date:	4/25/2012	
						Drawing No: ELSS-XLAC-BL		
						Supercedes:		
Part Numbers(s):	Description(s):	Government I.D. No.: 00912	Specifications:	Finish:	Title: 120V AC SCENE STAR BROW LIGHT Product(s) EXTENDA-LITE Style(s) ELSS	Scale: 1:5	Sheet(s): 2 OF 2	