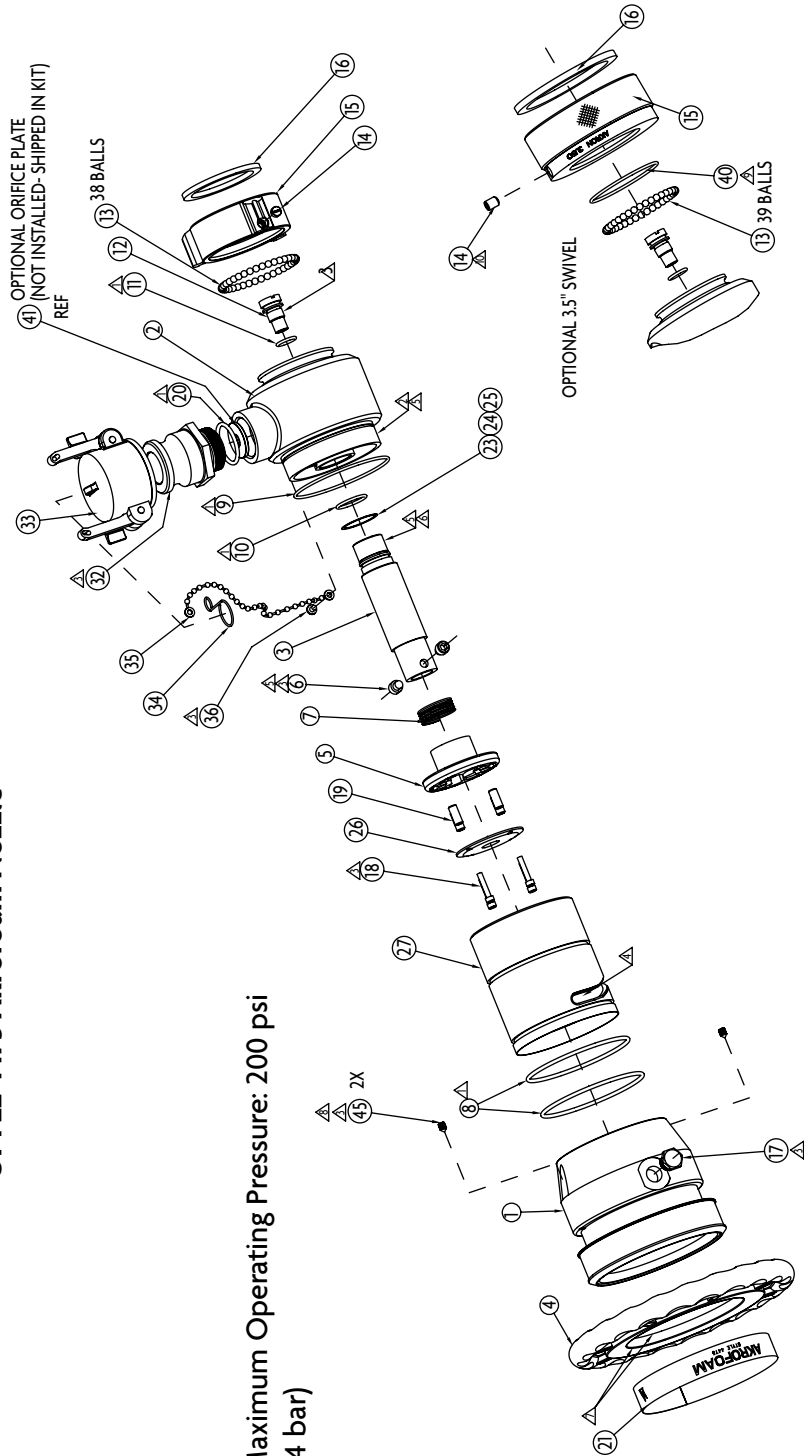


STYLE 4475 Akrofoam Nozzle

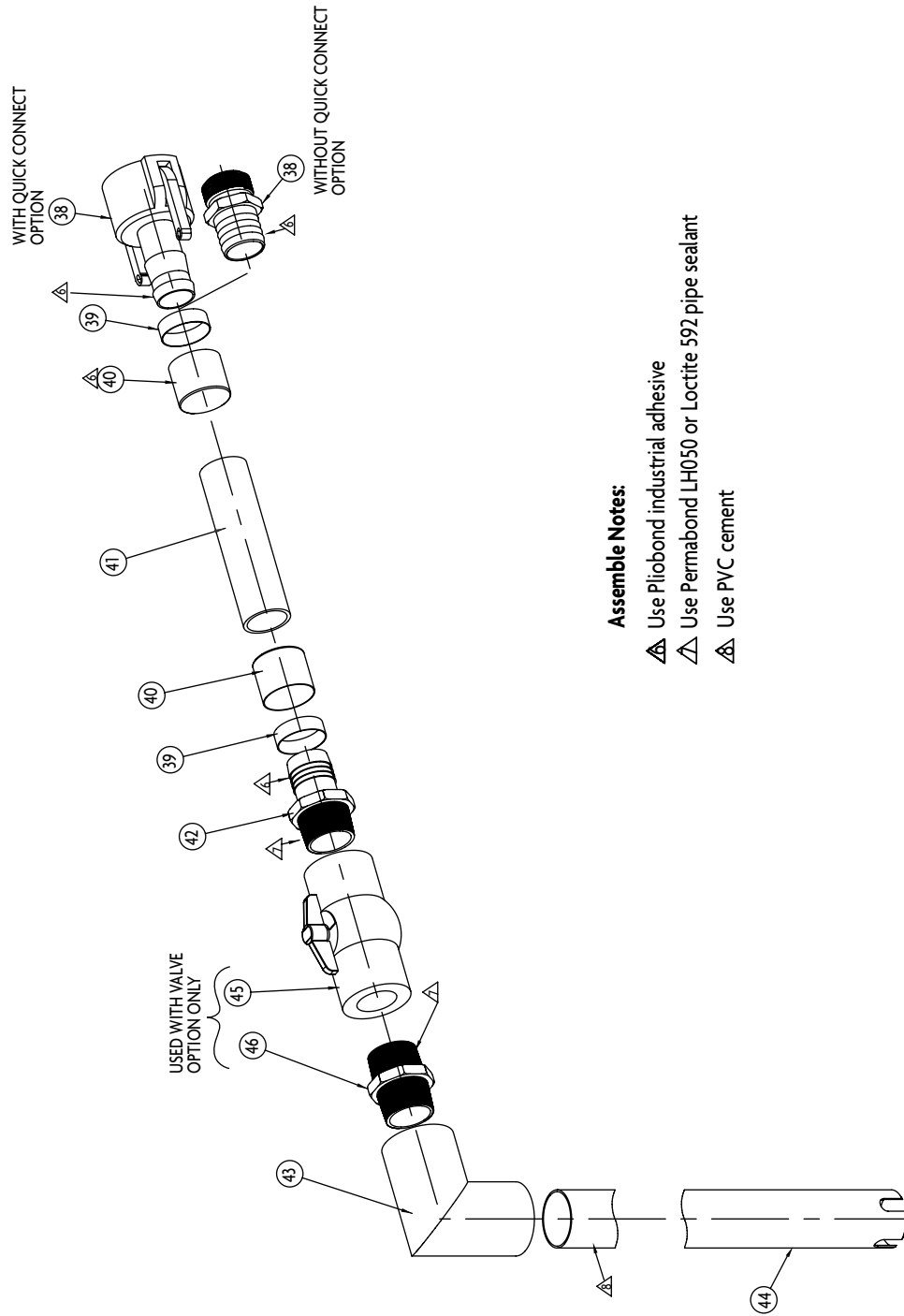
Maximum Operating Pressure: 200 psi
(14 bar)



ASSEMBLY NOTES:

- △ GREASE O-RING AT ASSEMBLY WITH PARKER O-LUBE
- △ USE PERMABOND HH120 OR LOCTITE 277 AT ASSEMBLY
- △ USE PERMABOND LM113 OR LOCTITE 222 AT ASSEMBLY
- △ GREASE WITH LOW-TEMP LUBRIPATE AT ASSEMBLY
- △ USE PRIMER T
- △ USE PERMABOND HH120 OR LOCTITE 277 AFTER NOZZLE CALIBRATION
- △ DO NOT SHAVE OR CUT BUMPER ID EDGE
- △ ADVANCE SET SCREW IN THREADED HOLE UNTIL IT TOUCHES BUMPER THEN ADVANCE SET SCREW TWO FULL TURNS
- △ GREASE BODY FACE (ITEM #4) AND O-RING (ITEM #40) WITH PARKER O-LUBE AT ASSEMBLY
- △ TIGHTEN CONE POINT SET SCREW BETWEEN TWO BALL BEARINGS UNTIL IT BOTTOMS OUT IN THE SWIVEL PLUG HOLE (SWIVEL SHOULD BE FIXED); THEN BACK OUT APPROX 1 TURN UNTIL SWIVEL TURNS SMOOTHLY; THEN STAKE THE FIRST THREAD TO PREVENT SCREW FROM BACKING OUT.

STYLE 4475 Akrofoam Pick-up Tube



Assemble Notes:

- ▲ Use Pliobond industrial adhesive
- ▲ Use Permabond LH050 or Loctite 592 pipe sealant
- ▲ Use PVC cement

NOZZLE			
ITEM NO.	DESCRIPTION	PART NUMBER	QUANTITY
1	Pattern Sleeve	*	1
2	Lower nozzle Body	122755	1
3	Foam Stem	119789	1
4	Pattern Control Ring	*	1
5	Baffle Head	122754	1
6	Bolt	703615	2
7	Baffle Spring	768362	1
8	O-Ring	757251	2
9	O-Ring	757358	1
10	O-Ring	757329	1
11	O-Ring	757002	1
13	Ball Bearings	**	38
14	Swivel Plug	742023	1
15	Swivel (NH)	101420	1
16	Swivel Gasket	717043	1
17	Cam Nut	735045	1
18	Socket Head Cap Screw	767041	4
19	Deflector Spacer	123219	4
20	O-Ring	757227	1
21	ID Band	703614	1
23	Shim-Pink	768359	As Req.
24	Shim-Brown	768358	As Req.
25	Shim-Blue	768357	As Req.
26	Deflector Plate	119769	1
27	Upper Nozzle Body	119788	1
32	Cam Lock Connector	119770	1
33	Dust Cover	707494	1
34	"S" Clip	707070	1
35	Beaded Chain	706225	1
36	Pan Head Screw	765104	1
37	Metering Disc D 1% @ 500 GPM	739027	1
37	Metering Disc E 3% @ 500 GPM	739028	1
45	Set Screw	765108	2

* The pattern control ring must be pressed on at the factory.

** Packet of 50 Ball Bearings - P/N 109041

PICKUP ASSEMBLY			
ITEM NO.	DESCRIPTION	PART NUMBER	QUANTITY
038	Connector (Threaded)	707471	1
038	Connector (Quick Connector (std)	707489	1
039	Clamp	707166 #	2
040	Ferrule	109028	2
041	Pickup Hose	721242	1
042	Connector 1 1/2 npt	707159	1
043	Elbow	710125	1
044	Pickup Tube	772118	1
045	Shutoff (optional)	779047	1
046	Hex Nipple (optional)	736053	1

Special tool required to assemble



**STYLE 4475
AKROFOAM NOZZLE
WITH METERING DISCS AND FIXED BAFFLE
TECHNICAL SERVICE PARTS LIST**



Tested.. Proven.. Trusted.

ISO 9001 REGISTERED COMPANY

PHONE: 330.264.5678 or 800.228.1161 | FAX: 330.264.2944 or 800.531.7335 | akronbrass.com

REVISED: 06/12

WARRANTY AND DISCLAIMER: We warrant Akron Brass products for a period of five (5) years after purchase against defects in materials or workmanship. Akron Brass will repair or replace product which fails to satisfy this warranty. Repair or replacement shall be at the discretion of Akron Brass. Products must be promptly returned to Akron Brass for warranty service.

We will not be responsible for: wear and tear; any improper installation, use, maintenance or storage; negligence of the owner or user; repair or modification after delivery; damage; failure to follow our instructions or recommendations; or anything else beyond our control. WE MAKE NO WARRANTIES, EXPRESS OR IMPLIED, OTHER THAN THOSE INCLUDED IN THIS WARRANTY STATEMENT, AND WE DISCLAIM ANY IMPLIED WARRANTY OF MERCHANTABILITY OR FITNESS FOR ANY PARTICULAR PURPOSE. Further, we will not be responsible for any consequential, incidental or indirect damages (including, but not limited to, any loss of profits) from any cause whatsoever. No person has authority to change this warranty.

© Akron Brass Company, 2011 All rights reserved. No portion of this can be reproduced without the express written consent of Akron Brass Company.