



TECHNICAL SERVICE PARTS

STYLE 5160
PRODUCT 1250 GPM AKROMATIC

IF AN ITEM IS NOTED AS "NOT FIELD REPAIRABLE", OR YOU WISH TO RETURN AN ITEM TO AKRON BRASS FOR SERVICE PLEASE GO ONLINE TO, ONLINEREPAIR.AKRONBRASS.COM

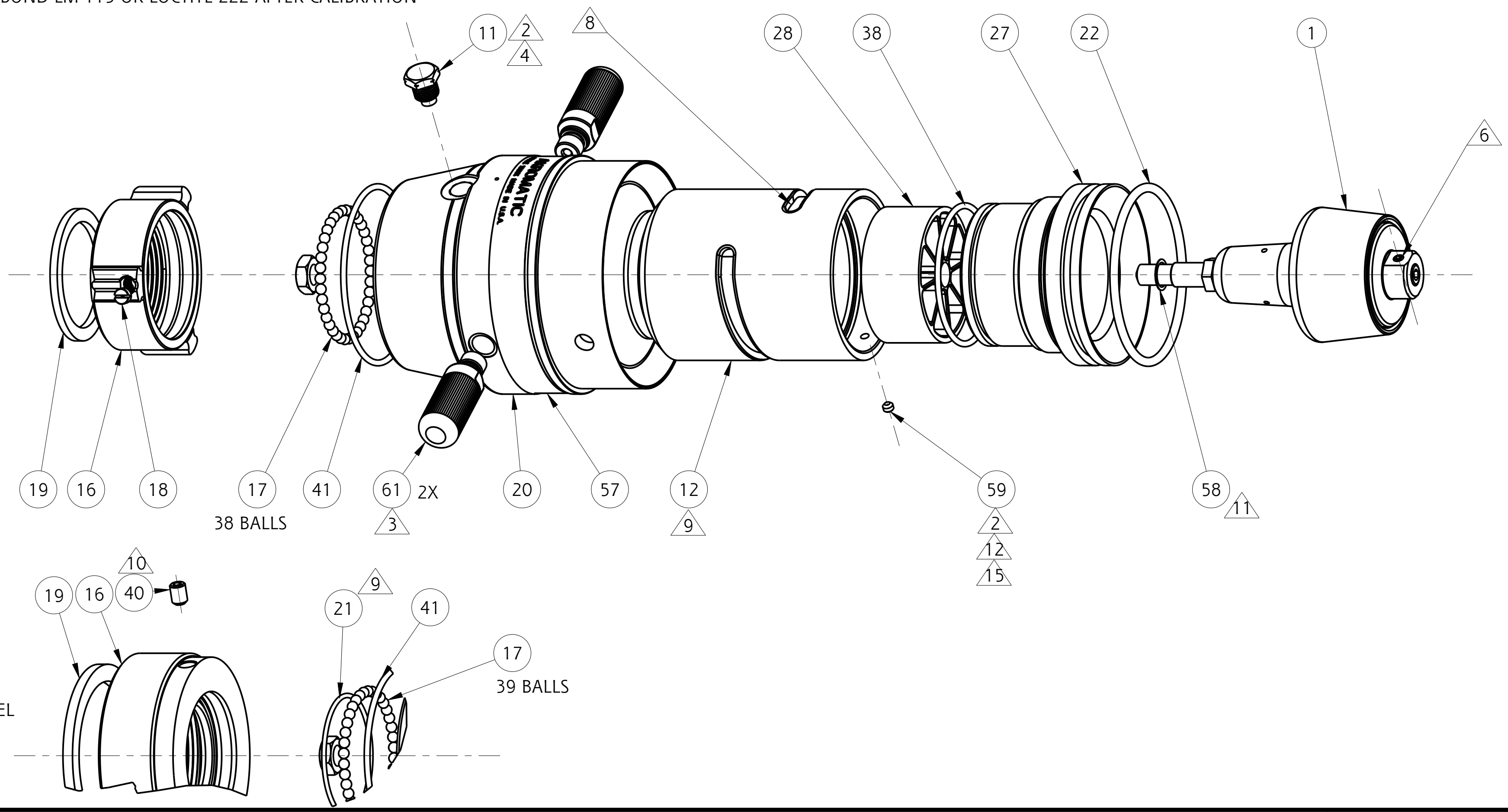
Chg.	Date
10	10-17
11	08-19

NOTES:

USE PARKER O-LUBE ON ALL O-RINGS AND MATING SURFACES UNLESS OTHERWISE NOTED.

- △2 USE PERMABOND LM-113 OR LOCTITE 222
- △3 USE PRIMER T AND PERMABOND HH-120 OR LOCTITE 277.
- △4 STAMP LETTER "D" AFTER CALIBRATION
- △5 PRESET GAGE LENGTH PER ASSEMBLY INSTRUCTIONS AND CHART ON SHEET 3 REF BAFFLE SUB-ASSEMBLY DWG C-42951
- △6 USE PERMABOND LM-113 OR LOCTITE 222 AFTER CALIBRATION

- △8 USE LOW-TEMP LUBRIPLATE AT ASSEMBLY
- △9 GREASE BODY FACE (ITEM 12) AND O-RING (ITEM 21) WITH PARKER O-LUBE AT ASSEMBLY
- △10 TIGHTEN CONE POINT SET SCREW BETWEEN TWO BALL BEARINGS UNTIL IT BOTTOMS OUT IN SWIVEL PLUG HOLE (SWIVEL SHOULD BE FIXED). THEN BACK OUT APPROX 1 TURN UNTIL SWIVEL TURNS SMOOTHLY. THEN, STAKE THE FIRST THREAD TO PREVENT SCREW FROM BACKING OUT.
- △11 WATER MUST BE ABLE TO DRAIN BETWEEN BAFFLE CUP (ITEM 1) AND THROAT (ITEM 27) WHEN ASSEMBLED. IF THE BAFFLE CUP IS TIGHT AGAINST THE THROAT, ADD A SECOND SHIM (ITEM 58). (A PIECE OF PAPER SHOULD BE ABLE TO SLIDE BETWEEN THE BAFFLE CUP AND THROAT.)
- △12 DIMPLE AT ASSEMBLY
- △15 DO NOT OVERTIGHTEN



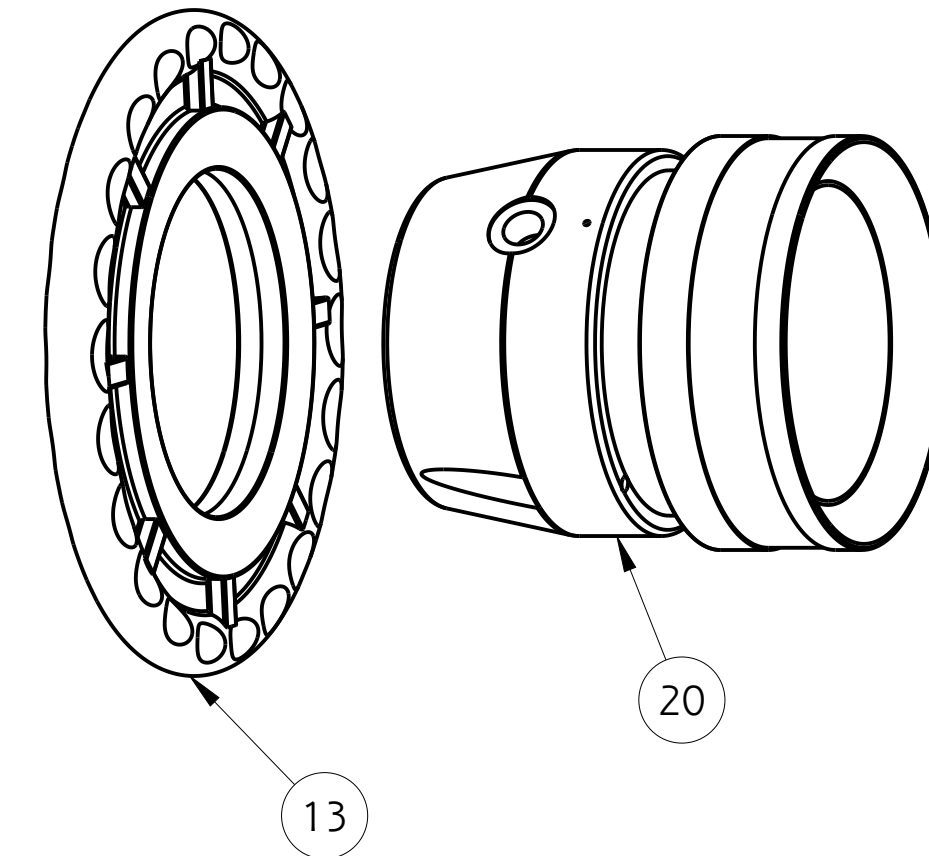
PHONE: 330.264.5678 or 800.228.1161 | FAX: 330.264.2944 or 800.531.7335 | www.akronbrass.com

WARRANTY AND DISCLAIMER*: We warrant Akron Brass products for a period of five (5) years* after purchase against defects in materials or workmanship. Akron Brass will repair or replace product which fails to satisfy this warranty. Repair or replacement shall be at the discretion of Akron Brass. Products must be promptly returned to Akron Brass for warranty service. We will not be responsible for: wear and tear; any improper installation, use, maintenance or storage; negligence of the owner or user; repair or modification after delivery; failure to follow our instructions or recommendations; or anything else beyond our control. WE MAKE NO WARRANTIES, EXPRESS OR IMPLIED, OTHER THAN THOSE INCLUDED IN THIS WARRANTY STATEMENT, AND WE DISCLAIM ANY IMPLIED WARRANTY OF MERCHANTABILITY OR FITNESS FOR ANY PARTICULAR PURPOSE. Further, we will not be responsible for any consequential, incidental or indirect damages (including, but not limited to, any loss of profits) from any cause whatsoever. No person has authority to change this warranty. *Unless otherwise provided herein. Akron Brass industrial electronic components & the Severe-Duty Monitor have a one (1) year warranty. Select Akron Brass handline nozzles and valves carry a ten (10) year warranty. Scene Star Lights carry a (6) year warranty. Weldon products have a two (2) year warranty from date of manufacture (excluding consumable components). Select Weldon LED products carry a five (5) year warranty. Honda products have the manufacturers' warranty and Akron Brass disclaims any warranty in respect of those products.

© 2016 Akron Brass Company. All rights reserved. No portion of this can be reproduced without the express written consent of the Akron Brass Company.

Parts List Sheet:
119733

FIND		DESCRIPTION	ITEM NO.	QTY
1		BAFFLE SUB-ASSEMBLY 250 - 1250 GPM @ 80 PSI	51600001	1
1		BAFFLE SUB-ASSEMBLY 250 - 1000 GPM @ 80 PSI	51600002	1
1		BAFFLE SUB-ASSEMBLY 250 - 800 GPM @ 80 PSI	51600020	1
1		BAFFLE SUB-ASSEMBLY 250 - 750 GPM @ 80 PSI	51600021	1
1		BAFFLE SUB-ASSEMBLY 250 - 500 GPM @ 80 PSI	51600045	1
9		NUT HEX NYLON INSERT 1/2-13	734099	1
11		CAM NUT	735045	1
12		NOZZLE BODY	120053	1
13	**	PATTERN CONTROL RING	-	1
16		SWIVEL (2 1/2" NH)	101420	1
16		SWIVEL (3 1/2" NH)	109525	1
17	A	BALL BRASS Ø 1/4" (2 1/2")	-	38
17	A	BALL BRASS Ø 1/4" (3 1/2")	-	39
18	A	PLUG SWIVEL (2 1/2")	-	1
19		GASKET (2 1/2")	717043	1
19		GASKET (3 1/2")	714023	1
20	**	PATTERN SLEEVE (FOR PATTERN CONTROL RING)	-	1
20		PATTERN SLEEVE (FOR HANDLES)	127884	1
21		O-RING 2-149	757087	1
22		O-RING 2-344	757038	1
27		THROAT	119703	1
28		STREAM SHAPER	119705	1
38		O-RING 2-235	757046	1
40		SCREW SOCKET HEAD CONE POINT 3/8-24 X 1/2	765186	1
41		O-RING 2-243	757337	1
57		ID BAND	704776	1
58		SHIM	769740	1
59		SCREW SOCKET HEAD SET 1/4-20 X3/16	765008	1
61		HANDLE	124394	2
A		KIT OF 50 BALLS 1/4" BRASS	109041	



DISCONTINUED PATTERN SLEEVE WITH CONTROL RING (FOR REPAIR ONLY)

** PATTERN CONTROL RING (ITEM 13) MUST BE PRESSED ONTO PATTERN SLEEVE (ITEM 20) AT THE FACTORY