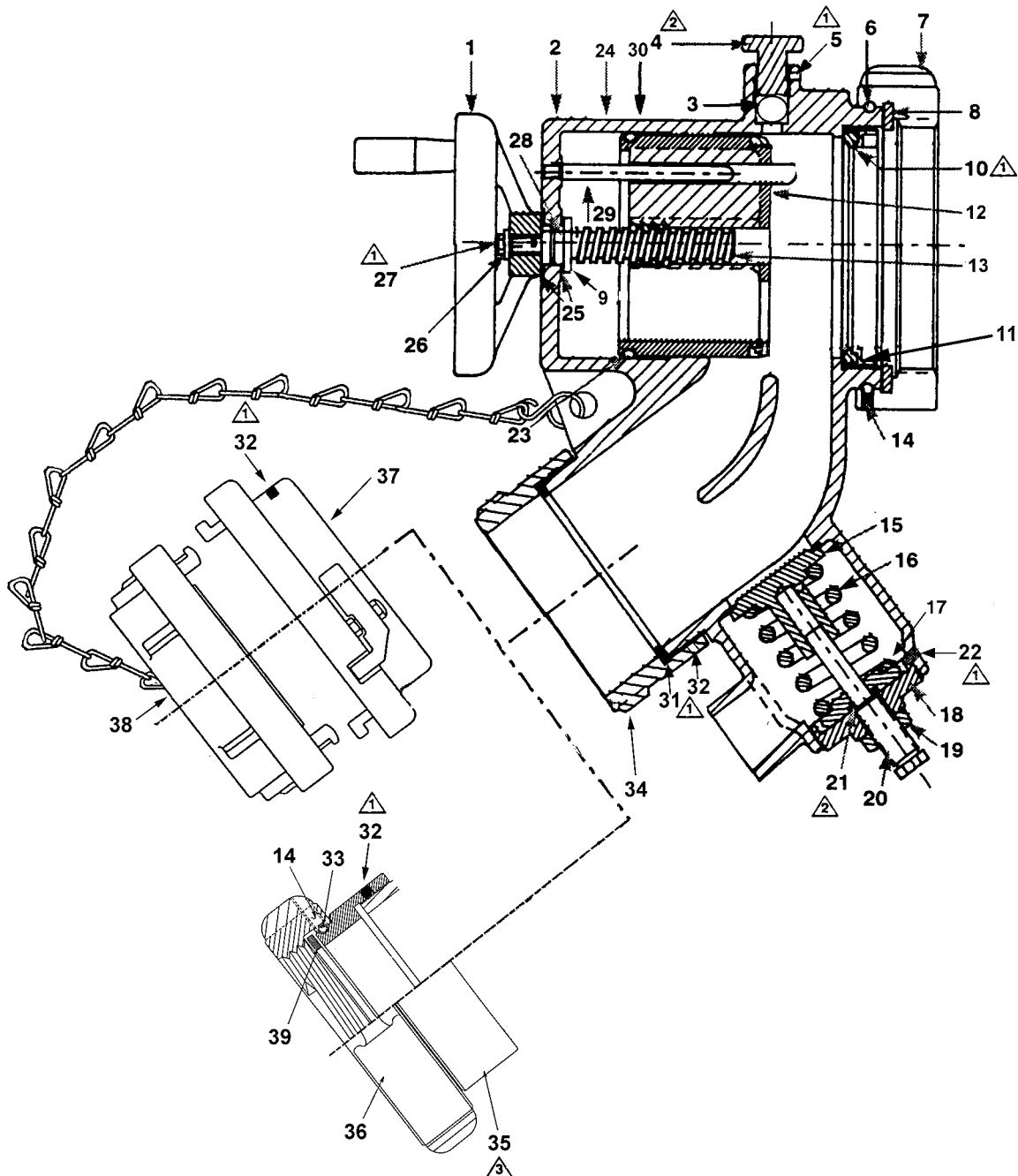


**TECHNICAL SERVICE PARTS**



**ASSEMBLY NOTES**

- △ 1 Use Loctite 222 or Permabond LM113
- △ 2 Use Lubriplate
- △ 3 Use Loctite 277 or Permabond HH120



**STYLE 7980**  
**PISTON INTAKE VALVE**  
**MANUFACTURED BEFORE NOV. 2009**  
**TECHNICAL SERVICE PARTS LIST**

ITEM NO.	DESCRIPTION	PART NUMBER	QTY.
1	Handwheel with Spinner	721343	1
1a	Spinner only for Handwheel	769554	1
2	Body with 5" BSP	117706	1
3	Ball*	703562	1
4	Knob*	118260	1
5	Set Screw	765117	1
6	Ball Bearings	**	
7	Outlet Swivel - 5" Rockerlug (NH)#	110081	1
7	Outlet Swivel - 6" Rockerlug (NH)#	104019	1
7	Outlet Swivel - 6" Long Handle (NH)#	104053	1
8	Outlet Swivel Gasket - 5"	714026	1
8	Outlet Swivel Gasket - 6"	714028	1
9	Washer	†	1
10	Seat Ring	†	1
11	Seat Ring O-Ring	†	1
12	Piston	†	1
13	Drive Screw	†	1
14	Swivel Plug	742023	1 or 2
15	Poppet	109415	1
16	Spring	768268	1
17	Spring Retainer	110080	1
18	Cap	110076	1
19	Jam Nut	735053	1
20	Guide Pin	741059	1
21	Thrust Washer	784119	1
22	Set Screw	765008	1
23	O-Ring	757314	1
24	ID Tag	773326	1
25	Thrust Washer†	784108	2
26	Washer	784109	1
27	Hex Head Screw	761050	1
28	O-Ring	757052	1
29	Stop Rod		†

ITEM NO.	DESCRIPTION	PART NUMBER	QTY
30	Grip Nail	736045	4
31	Gasket	714209	1
32	Set Screw	766015	1 or 2
33	Ball Bearings	**	
34	Male Inlet 4"NH#	116895	1
34	Male Inlet 4 1/2" NH#	116891	1
34	Male Inlet 5"NH#	116892	1
34	Male Inlet 6" NH#	116893	1
35	Swivel Inlet Adapter 4"	116886	1
35	Swivel Inlet Adapter 4 1/2"	116888	1
35	Swivel Inlet Adapter 5"	116889	1
36	Rocker Lug Swivel 4" NH#	104015	1
36	Rocker Lug Swivel 4 1/2" NH#	104016	1
36	Rocker Lug Swivel 5" NH#	104017	1
37	Rigid Storz Head 4"	116986	1
37	Rigid Storz Head 5"	107071	1
37	Rigid Storz Head 6"***	116897	1
38	Storz Cap with Chain 4"	707359	1
38	Storz Cap with Chain 5"	707360	1
38	Storz Cap with Chain 6"	707373	1
39	Swivel Gasket 4"@	714024	1
39	Swivel Gasket 4 1/2"@	714025	1
39	Swivel Gasket 5"@	714026	1
Not Shown	Swivel Storz Adapter 4"	116887	1
Not Shown	Swivel Storz Adapter 5"	116890	1
Not Shown	Swiveling Storz Head 4"	713205	1
Not Shown	Swiveling Storz Head 5"	713206	1
Not Shown	Storz Seal 4"	769333	1
Not Shown	Storz Seal 5"	769427	1
Not Shown	Storz Adapter Gasket 4"&5"	714187	1
Not Shown	Swiveling Storz O-Ring 4"	757337	1
Not Shown	Swiveling Storz O-Ring 5"	757078	1

\* If the unit has a Spool vs. a Ball, when ordering Item #3 or #4, both items must be replaced.

\*\* The Inlet and Outlet both use Ball Bearing Swivels. Part Number 109041 is a package of 50 Ball Bearings. The quantity used is as follows:

4" Inlet Female	58
4 1/2" Inlet Female	69
5" Inlet Female	72
4" Inlet Storz	54
5" Inlet Storz	61
5" or 6" Outlet Swivel	88

\*\*\* Requires Adapter (Part Number 116896) - not shown

@ Optional Drafting Gaskets for Storz Inlets:

4" P/N	714211
5" P/N	714212
6" P/N	714213

# For other threads order by description and thread size (ODM & TPI) or by Akron Thread Code.

† If these parts are in need of repair, the unit must be returned to the factory.

‡ Item #25 replaceable on exterior of body. For replacement of internal washer, return to factory.

Parts required for optional Air Bleeder Lines (not shown):

Clamps	7-07-188	2
Screws	7-67-029	2
Hose	7-21-363	38"
Clamp	7-07-430	2



**Tested... Proven... Trusted.**

ISO 9001 REGISTERED COMPANY

PHONE: 330.264.5678 or 800.228.1161 | FAX: 330.264.2944 or 800.531.7335 | akronbrass.com

REVISED: 8/11

WARRANTY AND DISCLAIMER: We warrant Akron Brass products for a period of five (5) years after purchase against defects in materials or workmanship. Akron Brass will repair or replace product which fails to satisfy this warranty. Repair or replacement shall be at the discretion of Akron Brass. Products must be promptly returned to Akron Brass for warranty service.

We will not be responsible for: wear and tear; any improper installation, use, maintenance or storage; negligence of the owner or user; repair or modification after delivery; damage; failure to follow our instructions or recommendations; or anything else beyond our control. WE MAKE NO WARRANTIES, EXPRESS OR IMPLIED, OTHER THAN THOSE INCLUDED IN THIS WARRANTY STATEMENT, AND WE DISCLAIM ANY IMPLIED WARRANTY OF MERCHANTABILITY OR FITNESS FOR ANY PARTICULAR PURPOSE. Further, we will not be responsible for any consequential, incidental or indirect damages (including, but not limited to, any loss of profits) from any cause whatsoever. No person has authority to change this warranty.

© Akron Brass Company. 2011 All rights reserved. No portion of this can be reproduced without the express written consent of Akron Brass Company.