



Style 9159 Field Service Kit for:

Style 2130 Trident™ Shutoff
Manufactured after 2004



Tested... Proven... Trusted.

ISO 9001 REGISTERED COMPANY

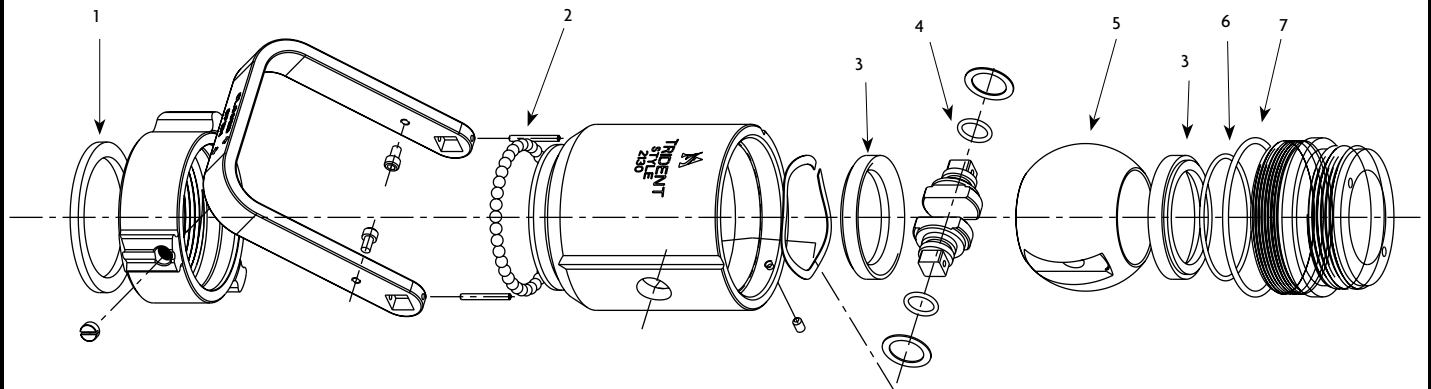
PHONE: 330.264.5678 or 800.228.1161 | FAX: 330.264.2944 or
800.531.7335 | akronbrass.com REVISED: 4/12

WARRANTY AND DISCLAIMER: We warrant Akron Brass products for a period of five (5) years after purchase against defects in materials or workmanship. Akron Brass will repair or replace product which fails to satisfy this warranty. Repair or replacement shall be at the discretion of Akron Brass. Products must be promptly returned to Akron Brass for warranty service.

We will not be responsible for wear and tear; any improper installation, use, maintenance or storage; negligence of the owner or user; repair or modification after delivery; damage; failure to follow our instructions or recommendations; or anything else beyond our control. **WE MAKE NO WARRANTIES, EXPRESS OR IMPLIED OTHER THAN THOSE INCLUDED IN THIS WARRANTY STATEMENT, AND WE DISCLAIM ANY IMPLIED WARRANTY OF MERCHANTABILITY OR FITNESS FOR ANY PARTICULAR PURPOSE.** Further, we will not be responsible for any consequential, incidental or indirect damages (including, but not limited to, any loss of profits) from any cause whatsoever. No person has authority to change this warranty.

© Akron Brass Company. 2012 All rights reserved. No portion of this can be reproduced without the express written consent of Akron Brass Company.

Style 9159 Field Service Kit for Style 2130



Item no.	Description	Part number
1.	Gasket	717043
2.	Roll Pin (2)	744080
3.	Seat (2)	769721
4.	O-Ring (2)	757008
5.	Ball	123173
6.	O-Ring	757159
7.	O-Ring	757046

Parts included in this kit are normally all that are required to repair leaks in the shutoff area. If additional nozzle components are required, contact Akron Brass for the appropriate technical service bulletin or return the nozzle to our factory; Akron Brass Co., Old Mansfield Rd., Wooster, Ohio 44691 or Akron Manufacturing Co., P.O. Box 280, Aylmer, Ontario N5H2R9.

FIELD SERVICE KIT INSTRUCTIONS

DISASSEMBLY

1. Remove the swivel gasket (1).
2. Remove the set screw at the discharge end of the shutoff body.
3. Insert a pin spanner tool into the holes in the male adapter and remove (counterclockwise).
4. Remove the O-Ring (7) from the male adapter.
5. Remove the front seat and O-Ring (3 and 6) from the male adapter.
6. Turn the handle to the open position and remove the ball (5).
7. Take a $\frac{1}{8}$ " punch and drive out the roll pins (2) securing the handle to the trunnions.
8. Push the trunnions into the shutoff body until they are free.
9. Remove the O-Rings (4) from the trunnions.
10. Remove the rear seat (3) from the shutoff body.

ASSEMBLY

NOTE: All O-Rings must be lubricated with O-Ring grease before assembly.

1. Install the new O-Ring (6) on the new front seat (3).
2. Install the new front seat and O-Ring into the male adapter.
3. Install the new rear seat into the shutoff body. Be sure the wavy spring is behind the seat.
4. Install the new O-Rings (4) on the trunnions.
5. Place the handle over the trunnion holes with the closed lettering facing the outlet.
6. Install the trunnions from inside the shutoff body. Be sure the nylon washers are between the trunnions and shutoff body.
7. Install the new roll pins (2) to secure the handle to the trunnions.
8. With the handle in the open position, insert the new ball (5).
9. Install the new O-Ring 7 on the male adapter.
10. With the handle in the closed position, thread the male adapter into the shutoff body. (Continue tightening until resistance is felt when opening and closing the shutoff.)
11. Install the new swivel gasket (1).
12. Test the nozzle with water to determine if the shutoff functions properly. If a small leak is present, tighten the male adapter slightly to eliminate the leak.
13. Once the shutoff functions properly, observe the male adapter through the set screws hole in the shutoff body. If a full thread is visible, drill a slight recess for the set screw use a #25 drill bit. Install and tighten the set screw with Loctite 222.