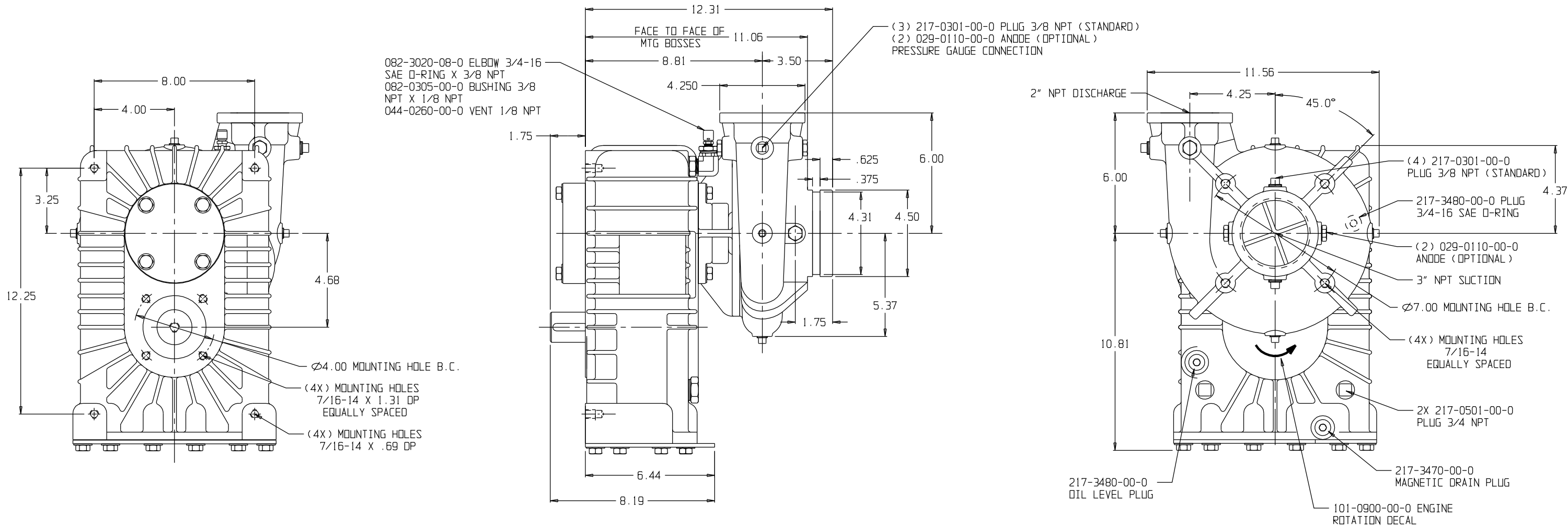


HALE CBPS SILENCER SERIES PUMP

1	2	3	4	5	6	7	8
DISCHARGE POSITION AND GEARBOX ORIENTATION ON ORDER SHEET, SPECIFY DISCHARGE POSITION AND GEARBOX ORIENTATION REQUIRED. IF NOTHING IS SPECIFIED POSITION 3 VERTICAL WILL BE SHIPPED.					 HORIZONTAL LEFT	 VERTICAL	 HORIZONTAL RIGHT



NOTES:

- 1) TO CONFORM TO NFPA 1901, APPARATUS MANUFACTURER MUST INSTALL (4) SHIFT AND THROTTLE CONTROL WARNING LIGHTS. THE INDICATOR LIGHTS ARE FURNISHED WITH PTO AND HYDRAULIC DRIVEN PUMPS, SEE PLATE NO. 825AA.
- 2) BASED ON GEARBOX ORIENTATION, MOUNT DRAIN PLUG IN LOWEST OF FOUR 3/4 SAE J1926 PORTS. INSTALL BREATHER VENT IN HIGHEST PORT. INSTALL PLUGS IN REMAINING 2 PORTS.
- 3) ALL DRIVELINES MUST CONFORM TO HALE BULLETIN #957. U-JOINT ANGLES SHOULD BE NO LESS THAN 1°; THE MAXIMUM ALLOWABLE ANGLE AND TUBE DIAMETER SHOULD BE CONFIRMED WITH THE MANUFACTURER OF THE DRIVELINE FOR THE PARTICULAR APPLICATION.
- 4) SET BEARING ENDPLAY ON PUMP SHAFT TO .003 - .005 USING SHIMS FROM 046-6760-00-0 SHIM SET.
- 5) INSTALL BEARING COVER AND PUMP HEAD SO THAT OILING SLOT IS FACING UP BASED ON THE SPECIFIED ORIENTATION.
- 6) OIL CAPACITY -
VERTICAL: 2 QUARTS
HORIZONTAL: 1-1/2 QUARTS

PL1196AA

ECD NO	REV	CHANGED FROM	BY	DATE	APVD	 HALE PRODUCTS, INC. A Unit of IDEX Corporation Conshohocken, PA 19428 USA
1022	A	RELEASE FOR PRODUCTION	MAB	09-22-10	MAL	
COPYRIGHT © NOT TO BE REPRODUCED OR USED TO MAKE OTHER DRAWINGS OR MACHINERY						DRAWN CHECKED
						MAB MAL
						DATE 09-22-10
						SIZE B
						SCALE : FULL