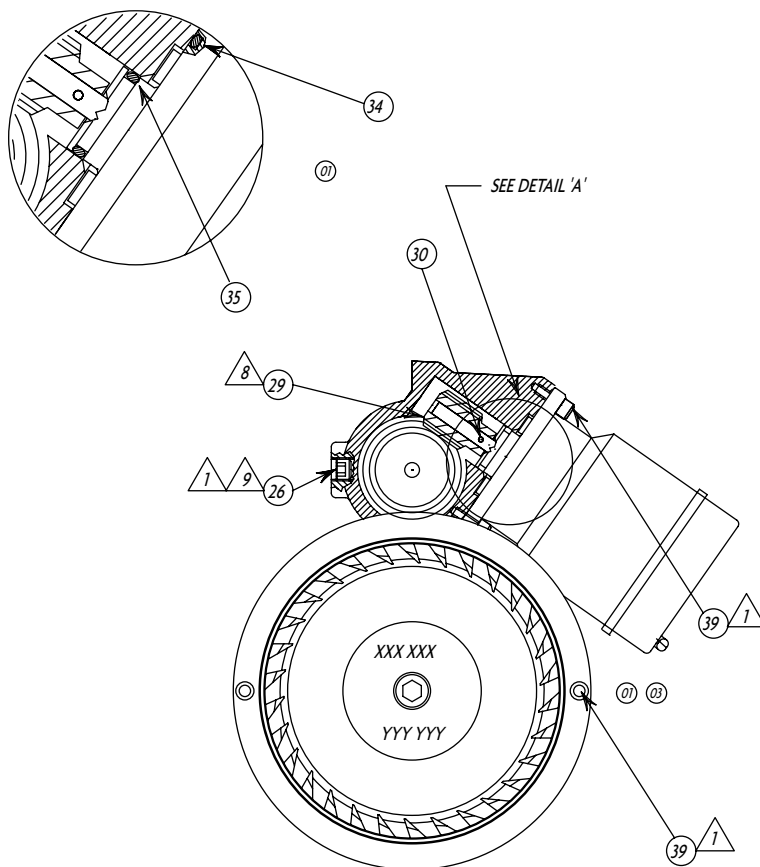
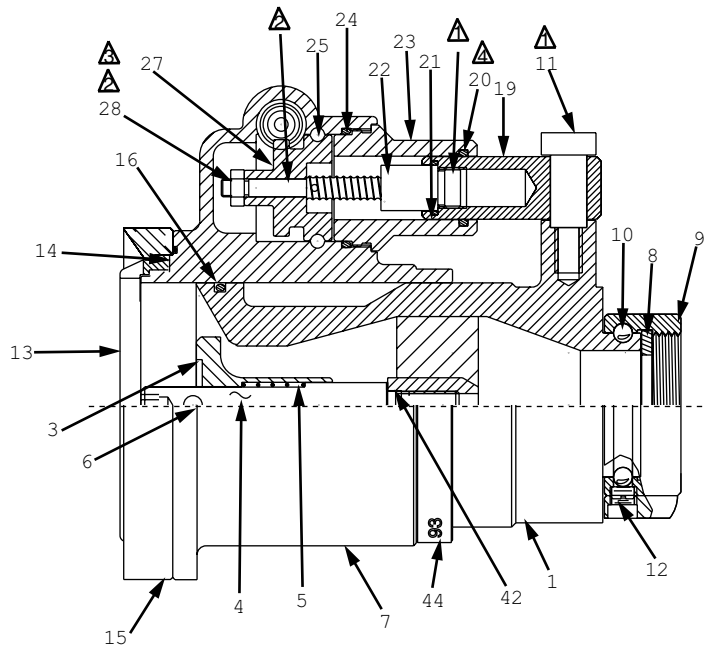


# TECHNICAL SERVICE PARTS



## ASSEMBLY NOTES:

- ▲ Use Permabond 113 or Loctite 222
- ▲ Use Permabond HH-120 or Loctite 277
- ▲ Torque to 35-45 in./lbs.
- ▲ Use Low Temp Lubriplate

## "IMPORTANT" INSTALLATION INSTRUCTIONS STYLE 3293

The Style 3293 has a full time swivel and must be locked in place as follows:

1. Thread the nozzle onto the monitor outlet.
2. Rotate the motor into required location.
3. Tighten the swivel.
4. Plug in motor connector.
5. To set gallonage, push in on the baffle head and rotate until desired setting aligns with the roll pin.

Note: Nozzle may need to be in flush to change to the lowest gallonage.

**MAXIMUM OPERATING PRESSURE: 200 PSI.**  
**FLOW RATING: 125-350 GPM AT 100 PSI**

**WARNING:** The electrical control system must incorporate a current limiting circuitry set for a maximum of 3 amps for 12 volts (1.5 amps for 24 volts.) Without circuitry set, motor may become inoperable if stalled during operation.



# STYLE 3293

## ELECTRICALLY CONTROLLED FIREFOX™

### NOZZLE 125-350 GPM

### TECHNICAL SERVICE PARTS LIST

ITEM NO.	DESCRIPTION	PART NUMBER	QUANTITY
1	Nozzle Body	118332	1
3	Baffle Head	118330	1
4	Baffle Stem	768318	1
5	Spring	768319	1
6	Groove Pin	744273	1
7	Pattern Sleeve	118333	1
8	Gasket	717042	1
9	Swivel 1.5 NH	115424	1
10	Brass Ball	703017	25
11	Shoulder Screw	765198	1
12	Swivel Plug	742023	1
13	Turbine Teeth	772171	1
14	O-Ring	757374	1
15	Full Disperse Retaining Ring	118472	1
15	Flat Disperse Retaining Ring	118454	1
16	O-Ring	757046	1
19	Housing Screw	117924	1
20	O-Ring	757293	1
21	O-Ring	757055	1
22	Screw	767148	1
23	Tube	108379	1
24	O-Ring	757048	1
25	Ball	704018	24
26	Socket Head Flat Screw	765134	1
27	Gear Ball Screw	718191	1
28	Hex Nut	734061	1
29	Worm Gear	785021	1
30	Roll Pin	744341	1

ITEM NO.	DESCRIPTION	PART NUMBER	QUANTITY
34	O-Ring	757056	1
35	O-Ring	757112	1
38	12V Motor Assembly*	5077-0028	1
38	24V Motor Assembly*	50770029	1
39	Socket Head Cap Screw	765150	6
42	Green Shim .003**	768308	1
42	Blue Shim .005**	768218	1
42	Brown Shim .010**	768219	1
42	Pink Shim .015**	768220	1
44	ID Band 12V	703563	1
44	ID Band 24V	703564	1

\* Not shown

\*\* Shims from manufacturing process stay with nozzle during repair.



PHONE: 330.264.5678 or 800.228.1161 | FAX: 330.264.2944 or 800.531.7335 | akronbrass.com

REVISED: 10/13

WARRANTY AND DISCLAIMER: We warrant Akron Brass products for a period of five (5) years after purchase against defects in materials or workmanship. Akron Brass will repair or replace product which fails to satisfy this warranty. Repair or replacement shall be at the discretion of Akron Brass. Products must be promptly returned to Akron Brass for warranty service.

We will not be responsible for: wear and tear; any improper installation, use, maintenance or storage; negligence of the owner or user; repair or modification after delivery; damage; failure to follow our instructions or recommendations; or anything else beyond our control. WE MAKE NO WARRANTIES, EXPRESS OR IMPLIED, OTHER THAN THOSE INCLUDED IN THIS WARRANTY STATEMENT, AND WE DISCLAIM ANY IMPLIED WARRANTY OF MERCHANTABILITY OR FITNESS FOR ANY PARTICULAR PURPOSE. Further, we will not be responsible for any consequential, incidental or indirect damages (including, but not limited to, any loss of profits) from any cause whatsoever. No person has authority to change this warranty.

© Akron Brass Company. 2000 All rights reserved. No portion of this can be reproduced without the express written consent of Akron Brass Company.