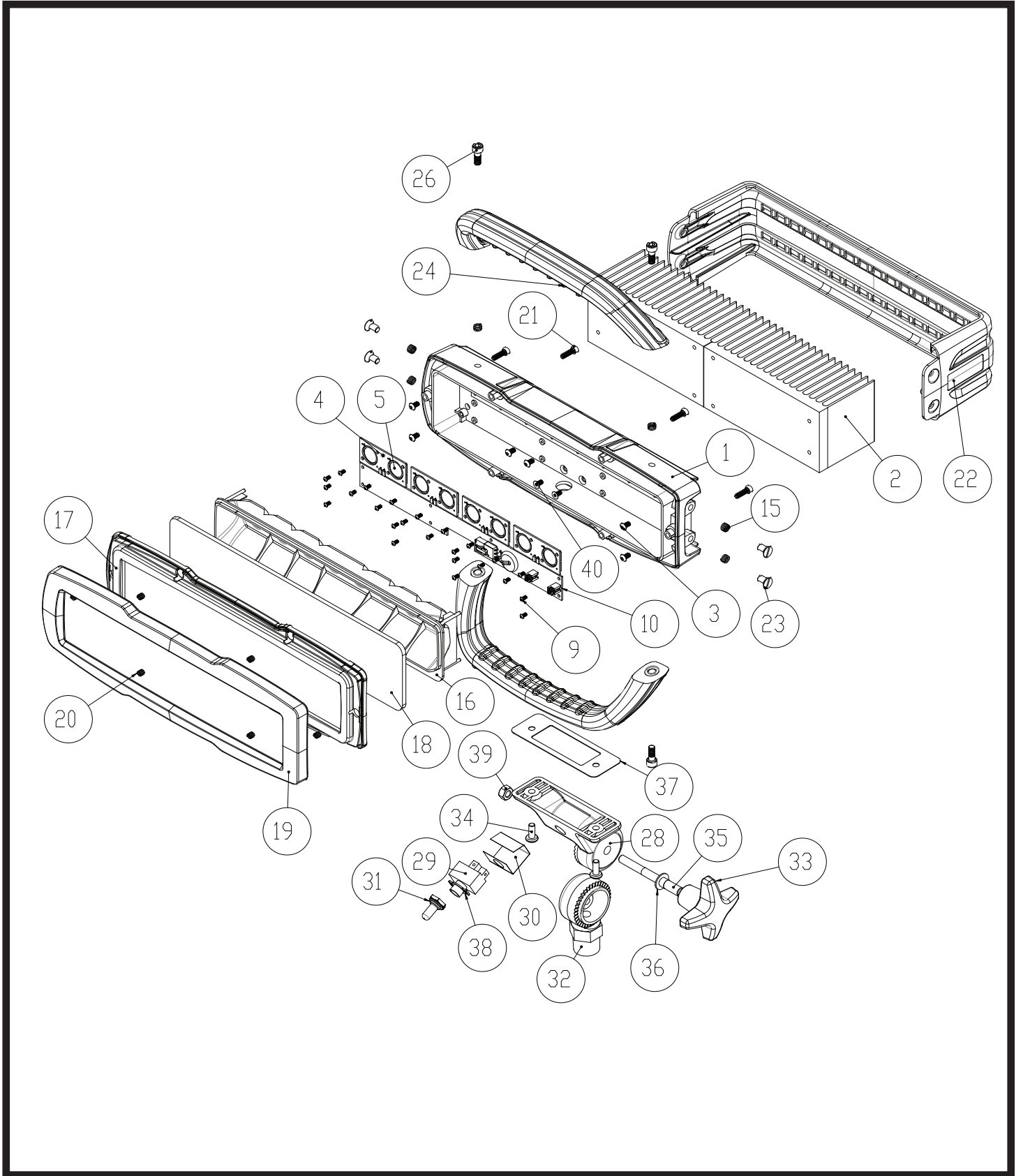


**TECHNICAL SERVICE PARTS**



ITEM NO.	PART NUMBER	DESCRIPTION	QTY.
1	**	LED HOUSING	1
2	**	HEAT SINK	2
3	**	M48MM HEAT SINK SCREW	6
4	**	2640 LUMEN LED ARRAY	4
5	**	1320 LUMEN LED	8
9	625-BS	M2.5 CIRCUIT BOARD SCREW	24
10	**	14K LUMEN LED DRIVER	1
15	**	M6 COIL INSERT	10
16	608-RF	REFLECTOR	1
17	634-BSC	BEZEL SEAL	1
18	607-LN	LENS	1
19	614-LF	BEZEL	1
20	**	M4 COIL INSERT	6
21	620-OR	BEZEL BOLT M4-16MM O-RING SEAL	6
22	610-BM	LED BUMPER	1
23	635-NS	M6-12MM LED BUMPER SCREW	4
24	605-SUB	HANDLE ASSEMBLY	2
26	617-CS	M6-16MM	4
28	605-SU	UPPER SWIVEL	1
29	344-SW	15A ON-OFF SWITCH	1
30	632-TI	TOGGLE SWITCH INSULATOR	1
31	345-SB	SWITCH BOOT	1
32	602-SL	LOWER SWIVEL	1
33	120-KB	LED SWIVEL ADJUSTMENT KNOB	1
34	600-PS	M6-16MM PAN LED SWIVEL SCREW	2
35	600-ST	LED SWIVEL ADJUSTMENT STUD	1
36	516-FW	5/16 SS FLAT WASHER	1
37	627-DG	DIECUT SWIVEL GASKET	1
38	344-SP	ON-OFF SWITCH PLATE	1
39	321-LN	NUT CENTER LOCK 5/16-18 SS	1
40	**	M4-8MM FLAT HEAD SCREW	2

**PARTS OMITTED FOR CLARITY**

1. 3 PCS OF H-646, RING TERMINAL
2. 12 PCS \*\*, THERMAL PAD
3. 3 PCS OF 476-ST, SPADE TERMINAL
4. 2 FT OF 146-BLK, 14GA BLACK WIRE
5. 2 FT OF 146-RED, 14GA RED WIRE

**\*\* THESE ITEMS ARE NOT FIELD REPLACABLE. PLEASE CONTACT THE FACTORY WHEN NEEDING THESE ITEMS SERVICED.**