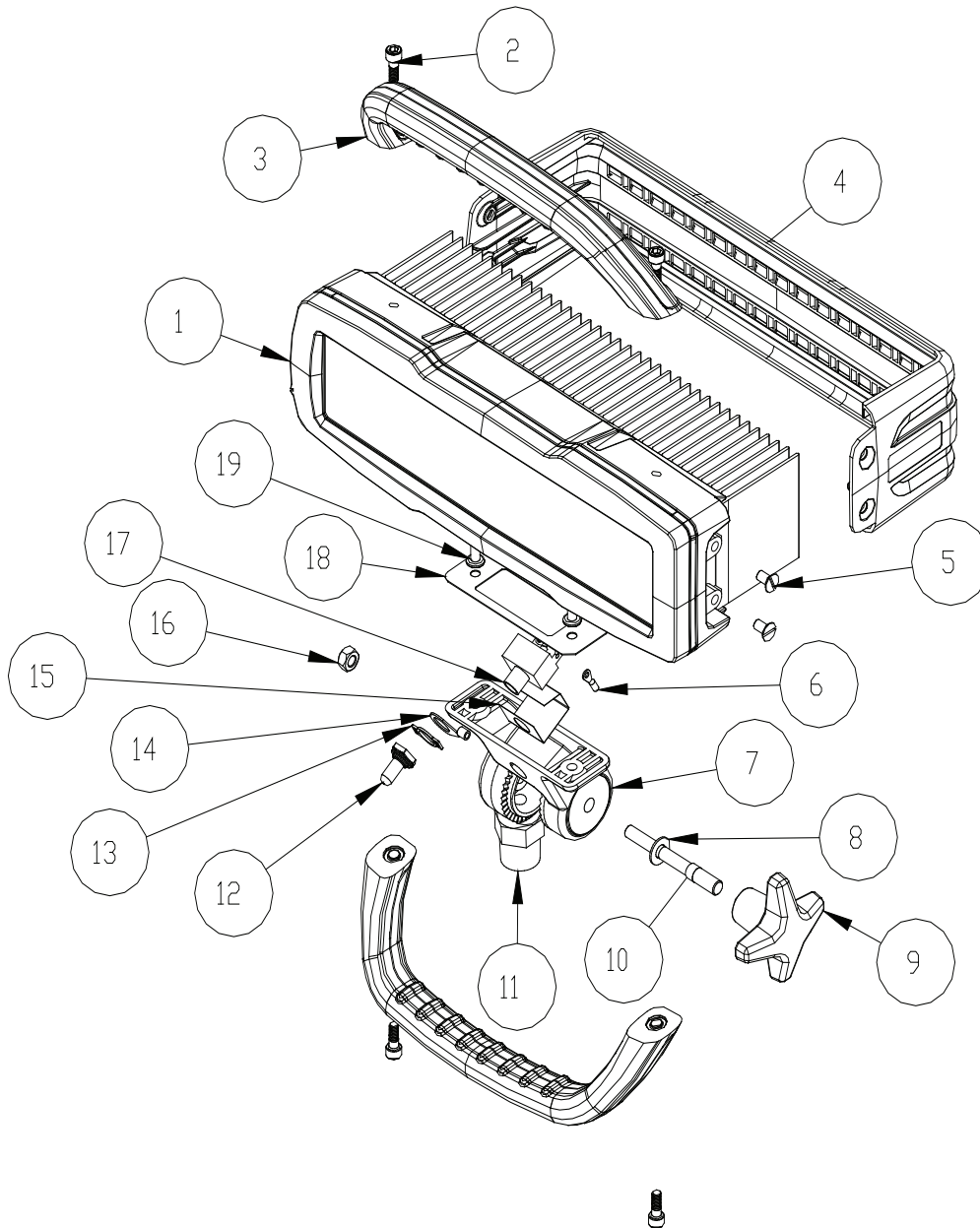


TECHNICAL SERVICE PARTS



ITEM NO.	PART NUMBER	DESCRIPTION	QTY.
1	**	ELECTRICAL ENCLOSURE	1
2	617-CS	M6 HANDLE CAP SCREWS	4
3	605-SUB	HANDLE ASSEMBLY	2
4	610-BM	LED BUMPER	1
5	635-NS	M6 BUMPER SCREWS	4
6	622-RT	18GA RING TERMINAL	2
7	605-SU	UPPER SWIVEL	1
8	516-FW	5/16 SS WASHER	1
9	120-KB	SWIVEL ADJUSTMENT KNOB	1
10	600-ST	SWIVEL ADJUSTMENT STUD	1
11	602-SL	LOWER SWIVEL	1
12	345-SB	SWITCH BOOT	1
13	344-SP	ON-OFF SWITCH PLATE	1
14	612-RT	1/2" RING TERMINAL	1
15	232-TI	TOGGLE SWITCH PROTECTOR	1
16	321-LN	5/16-18 CENTER LOCK NUT	1
17	344-SW	ON-OFF SWITCH	1
18	627-DG	DIECUT SWIVEL GASKET	1
19	600-PS	M6 SWIVEL SCREWS	2

120V PARTS OMITED FOR CLARITY

1. 18GA GREEN WIRE (186-GRN)
2. 18GA BLACK WIRE (186-BLK)
3. 18GA WHITE WIRE (186-WHT)
4. ANY PARTS IN THE ELECTRICAL ENCLOSURE

240V PARTS OMITED FOR CLARITY

1. 18GA BROWN WIRE (186-BRN)
2. 18GA BLUE WIRE (186-BLUE)
3. 18GA GREEN-YELLOW WIRE (186-GRN-YEL)
4. ANY PARTS IN THE ELECTRICAL ENCLOSURE

**** The AC SceneStar is assembled with tamper-proof screws. Internal components are not field serviceable. Please contact Akron Brass with any service questions or return the unit to the factory for repair.**