



| | |
|-------|------------|
| STYLE | 7982, 7983 |
|-------|------------|

| | |
|---------|--------------|
| PRODUCT | INTAKE VALVE |
|---------|--------------|

| Chg. | Date |
|------|-------|
| 13 | 10-20 |
| 14 | 02-21 |



USE PARKER O-LUBE ON ALL
O-RINGS AND MATING SURFACES
UNLESS OTHERWISE NOTED.

- 1 USE PERMABOND LM113 OR
LOCTITE 222.
- 2 USE MOBILITH SHC 460.
- 3 DIMPLE AT ASSEMBLY.
- 6 ALIGN BALL IN HOLE. TIGHTEN PLUG
UNTIL TOUCHES BALL. THEN BACK
OUT PLUG 1/4-1/2 TURN.
- 7 TIGHTEN UNTIL SLIGHT DRAG IS ON ITEM 42
- 9 TIGHTEN UNTIL ALL END PLAY IS ELIMINATED.
SHAFT ASSEMBLY MUST STILL SPIN FREELY.
DO NOT OVERTIGHTEN.
- 10 USE LOW-TEMP LUBRIPLATE.
- 11 USE NEVER SEEZ MARINERS CHOICE.
- 12 USE PRIMER T AND PERMABOND HH120
OR LOCTITE 277.
- 13 USE PARKER O-LUBE.
- 14 THOROUGHLY CLEAN THREADS OF PLUG
AND MATING PART AND APPLY LOCTITE 425.
- 15 AS SPECIFIED.
- 16 MAY BE SUPPLIED WITH STORZ FITTING
WHEN SPECIFIED.
- 17 OPTIONAL DRAIN VALVE LOCATION, USE
PERMABOND LH050 OR LOCTITE 592.
- 18 TIGHTEN TO 50-55 IN-LBS.
- 19 CLEAN EXCESS GREASE FROM THIS SURFACE.

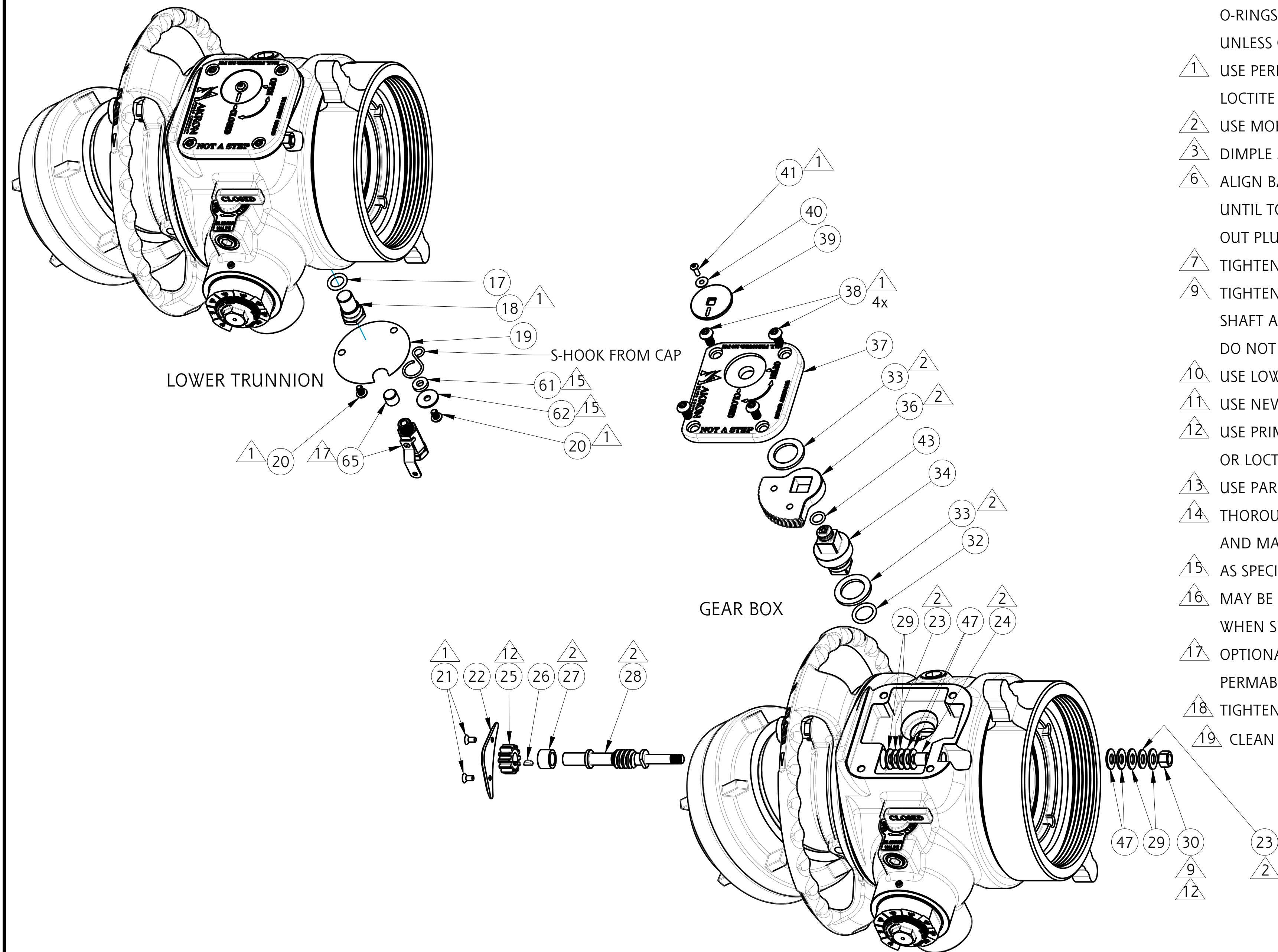
WARRANTY AND DISCLAIMER*: We warrant Akron Brass products for a period of five (5) years* after purchase against defects in materials or workmanship. Akron Brass will repair or replace product which fails to satisfy this warranty. Repair or replacement shall be at the discretion of Akron Brass. Products must be promptly returned to Akron Brass for warranty service. We will not be responsible for: wear and tear; any improper installation, use, maintenance or storage; negligence of the owner or user; repair or modification after delivery; failure to follow our instructions or recommendations; or anything else beyond our control. **WE MAKE NO WARRANTIES, EXPRESS OR IMPLIED, OTHER THAN THOSE INCLUDED IN THIS WARRANTY STATEMENT, AND WE DISCLAIM ANY IMPLIED WARRANTY OF MERCHANTABILITY OR FITNESS FOR ANY PARTICULAR PURPOSE.** Further, we will not be responsible for any consequential, incidental or indirect damages (including, but not limited to, any loss of profits) from any cause whatsoever. No person has authority to change this warranty. *Unless otherwise provided herein. Akron Brass industrial electronic components & the Severe-Duty Monitor have a one (1) year warranty. Select Akron Brass handline nozzles and valves carry a ten (10) year warranty. Scene Star Lights carry a (6) year warranty. Weldon products have a two (2) year warranty from date of manufacture (excluding consumable components). Select Weldon LED products carry a five (5) year warranty. Honda products have the manufacturers' warranty and Akron Brass disclaims any warranty in respect of those products.

Parts List Sheet:

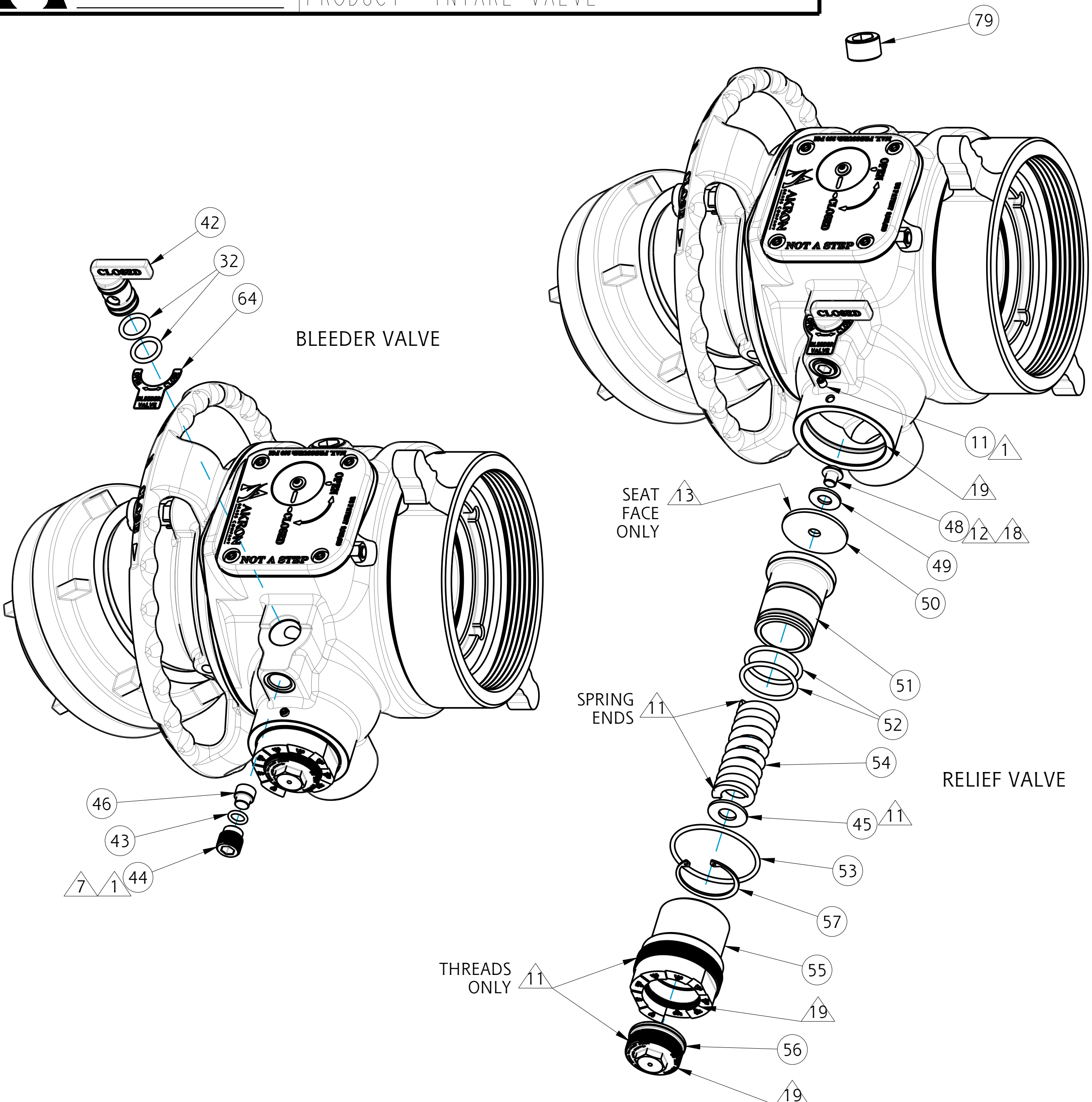
| 2 4 9 | 2

D47460

| Chg. | Date |
|------|-------|
| 13 | 10-20 |
| 14 | 02-21 |



- ASSEMBLY NOTES:
- USE PARKER O-LUBE ON ALL O-RINGS AND MATING SURFACES UNLESS OTHERWISE NOTED.
- 1 USE PERMABOND LM113 OR LOCTITE 222.
 - 2 USE MOBILITH SHC 460.
 - 3 DIMPLE AT ASSEMBLY.
 - 6 ALIGN BALL IN HOLE. TIGHTEN PLUG UNTIL TOUCHES BALL. THEN BACK OUT PLUG 1/4-1/2 TURN.
 - 7 TIGHTEN UNTIL SLIGHT DRAG IS ON ITEM 42.
 - 9 TIGHTEN UNTIL ALL END PLAY IS ELIMINATED. SHAFT ASSEMBLY MUST STILL SPIN FREELY. DO NOT OVERTIGHTEN.
 - 10 USE LOW-TEMP LUBRIPLATE.
 - 11 USE NEVER SEEZ MARINERS CHOICE.
 - 12 USE PRIMER T AND PERMABOND HH120 OR LOCTITE 277.
 - 13 USE PARKER O-LUBE.
 - 14 THOROUGHLY CLEAN THREADS OF PLUG AND MATING PART AND APPLY LOCTITE 425.
 - 15 AS SPECIFIED.
 - 16 MAY BE SUPPLIED WITH STORZ FITTING WHEN SPECIFIED.
 - 17 OPTIONAL DRAIN VALVE LOCATION, USE PERMABOND LH050 OR LOCTITE 592.
 - 18 TIGHTEN TO 50-55 IN-LBS.
 - 19 CLEAN EXCESS GREASE FROM THIS SURFACE.

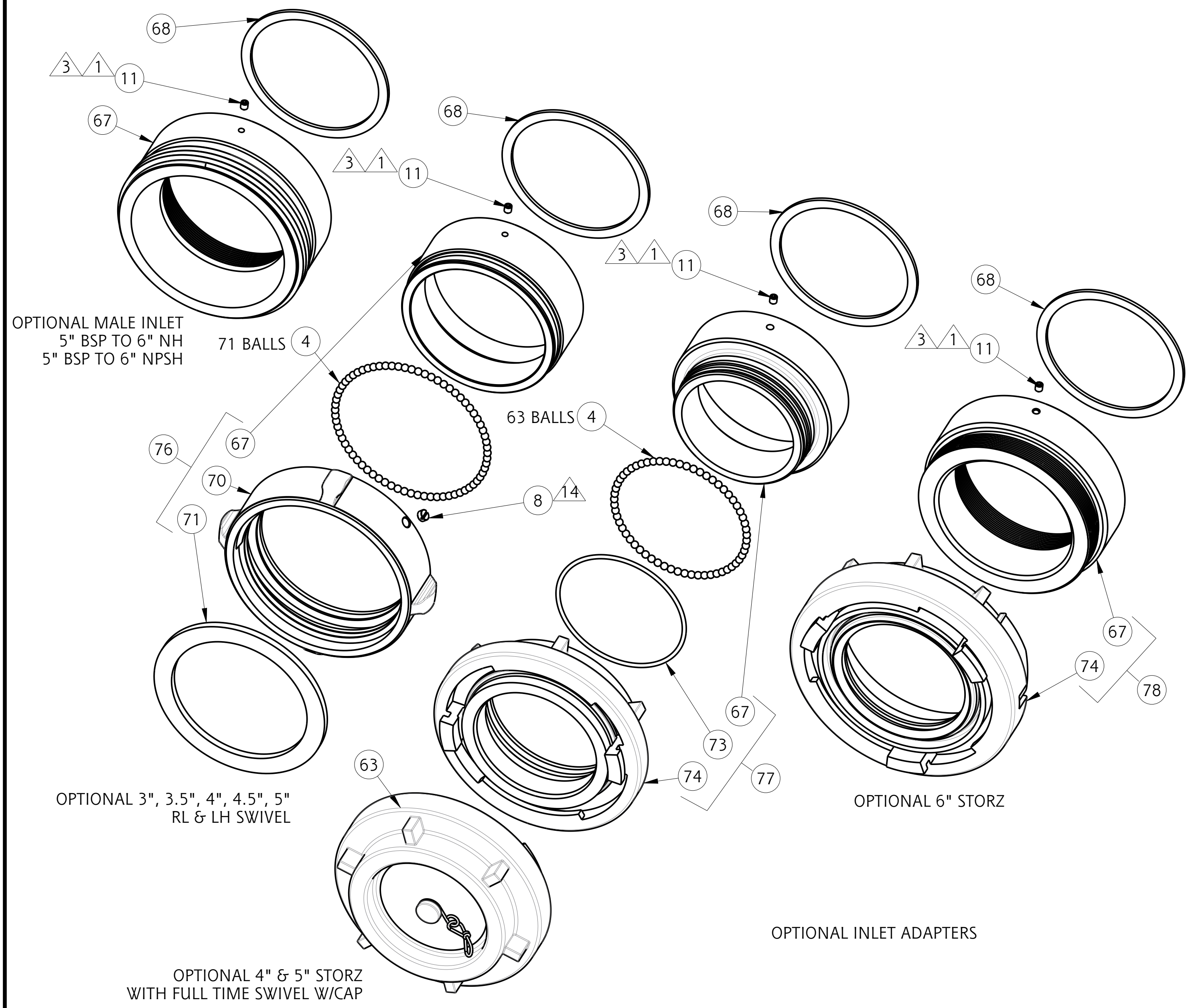


- ASSEMBLY NOTES:
- USE PARKER O-LUBE ON ALL O-RINGS AND MATING SURFACES UNLESS OTHERWISE NOTED.
- 1 USE PERMABOND LM113 OR LOCTITE 222.
 - 2 USE MOBILITH SHC 460.
 - 3 DIMPLE AT ASSEMBLY.
 - 6 ALIGN BALL IN HOLE. TIGHTEN PLUG UNTIL TOUCHES BALL. THEN BACK OUT PLUG 1/4-1/2 TURN.
 - 7 TIGHTEN UNTIL SLIGHT DRAG IS ON ITEM 42.
 - 9 TIGHTEN UNTIL ALL END PLAY IS ELIMINATED. SHAFT ASSEMBLY MUST STILL SPIN FREELY. DO NOT OVERTIGHTEN.
 - 10 USE LOW-TEMP LUBRIPLATE.
 - 11 USE NEVER SEEZ MARINERS CHOICE.
 - 12 USE PRIMER T AND PERMABOND HH120 OR LOCTITE 277.
 - 13 USE PARKER O-LUBE.
 - 14 THOROUGHLY CLEAN THREADS OF PLUG AND MATING PART AND APPLY LOCTITE 425.
 - 15 AS SPECIFIED.
 - 16 MAY BE SUPPLIED WITH STORZ FITTING WHEN SPECIFIED.
 - 17 OPTIONAL DRAIN VALVE LOCATION, USE PERMABOND LH050 OR LOCTITE 592.
 - 18 TIGHTEN TO 50-55 IN-LBS.
 - 19 CLEAN EXCESS GREASE FROM THIS SURFACE.

PHONE: 800.228.1161 | www.akronbrass.com

WARRANTY AND DISCLAIMER*: We warrant Akron Brass products for a period of five (5) years* after purchase against defects in materials or workmanship. Akron Brass will repair or replace product which fails to satisfy this warranty. Repair or replacement shall be at the discretion of Akron Brass. Products must be promptly returned to Akron Brass for warranty service. We will not be responsible for: wear and tear; any improper installation, use, maintenance or storage; negligence of the owner or user; repair or modification after delivery; failure to follow our instructions or recommendations; or anything else beyond our control. WE MAKE NO WARRANTIES, EXPRESS OR IMPLIED, OTHER THAN THOSE INCLUDED IN THIS WARRANTY STATEMENT, AND WE DISCLAIM ANY IMPLIED WARRANTY OF MERCHANTABILITY OR FITNESS FOR ANY PARTICULAR PURPOSE. Further, we will not be responsible for any consequential, incidental or indirect damages (including, but not limited to, any loss of profits) from any cause whatsoever. No person has authority to change this warranty. *Unless otherwise provided herein. Akron Brass industrial electronic components & the Severe-Duty Monitor have a one (1) year warranty. Select Akron Brass handline nozzles and valves carry a ten (10) year warranty. Scene Star Lights carry a (6) year warranty. Weldon products have a two (2) year warranty from date of manufacture (excluding consumable components). Select Weldon LED products carry a five (5) year warranty. Honda products have the manufacturers' warranty and Akron Brass disclaims any warranty in respect of those products.

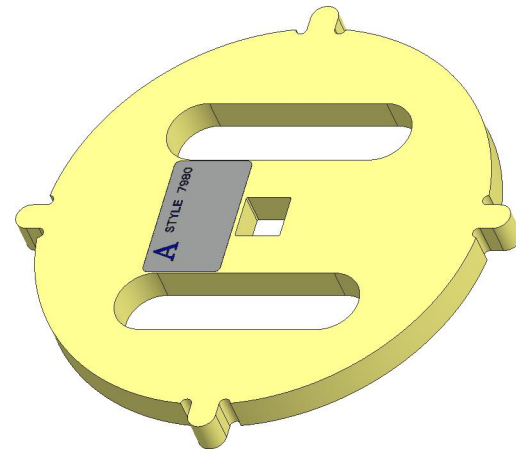
© 2016 Akron Brass Company. All rights reserved. No portion of this can be reproduced without the express written consent of the Akron Brass Company.



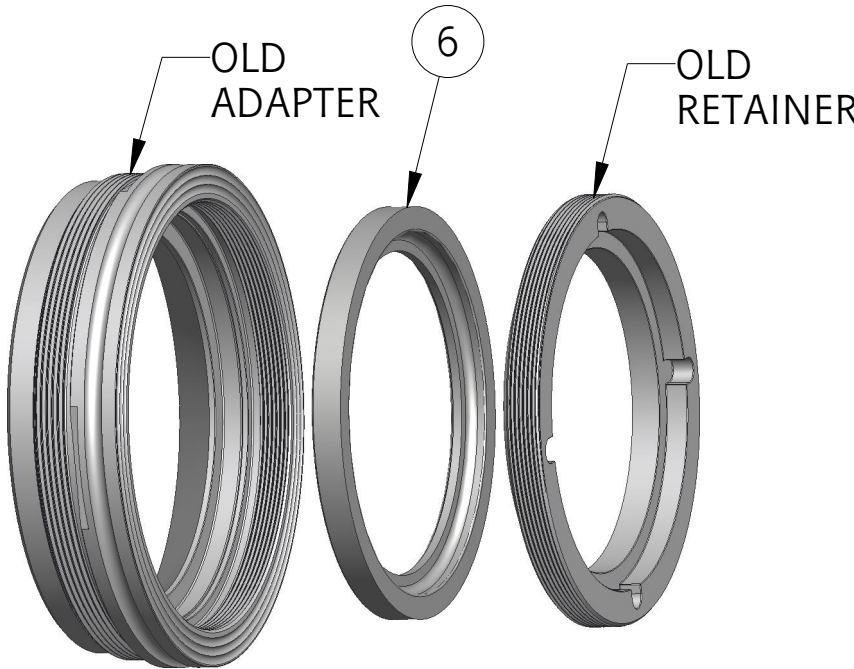
- ASSEMBLY NOTES:
- USE PARKER O-LUBE ON ALL O-RINGS AND MATING SURFACES UNLESS OTHERWISE NOTED.
- 1 USE PERMABOND LM113 OR LOCTITE 222.
 - 2 USE MOBILITH SHC 460.
 - 3 DIMPLE AT ASSEMBLY.
 - 6 ALIGN BALL IN HOLE. TIGHTEN PLUG UNTIL TOUCHES BALL. THEN BACK OUT PLUG 1/4-1/2 TURN.
 - 7 TIGHTEN UNTIL SLIGHT DRAG IS ON ITEM 42.
 - 9 TIGHTEN UNTIL ALL END PLAY IS ELIMINATED. SHAFT ASSEMBLY MUST STILL SPIN FREELY. DO NOT OVERTIGHTEN.
 - 10 USE LOW-TEMP LUBRIPLATE.
 - 11 USE NEVER SEEZ MARINERS CHOICE.
 - 12 USE PRIMER T AND PERMABOND HH120 OR LOCTITE 277.
 - 13 USE PARKER O-LUBE.
 - 14 THOROUGHLY CLEAN THREADS OF PLUG AND MATING PART AND APPLY LOCTITE 425.
 - 15 AS SPECIFIED.
 - 16 MAY BE SUPPLIED WITH STORZ FITTING WHEN SPECIFIED.
 - 17 OPTIONAL DRAIN VALVE LOCATION, USE PERMABOND LH050 OR LOCTITE 592.
 - 18 TIGHTEN TO 50-55 IN-LBS.

| Find | | Description | Item | QTY |
|------|------|---|--------|-----|
| 1 | | VALVE BODY 5.5" SWIVEL STYLE 7982 - PAINTED RED | 126483 | 1 |
| 1 | | VALVE BODY 5" BSP STYLE 7983 - PAINTED RED | 126484 | 1 |
| 2 | | BALL ST. STL. | 803173 | 1 |
| 3 | E | O-RING 2-260 | - | 1 |
| 4 | A, B | BALL 1/4" ST. STL. | - | 242 |
| 5 | | SWIVEL ADAPTER | 702236 | 1 |
| 6 | E, G | SEAL BALL | - | 1 |
| 7 | G | RETAINER RING 5-3/4" INTERNAL | 758351 | 1 |
| 8 | B | PLUG SWIVEL | - | 3 |
| 9 | F | SWIVEL 6"NH LH | 104053 | 1 |
| 9 | F | SWIVEL 5"NH RL | 110081 | 1 |
| 9 | F | SWIVEL 6"NH 4RL | 104019 | 1 |
| 10 | E | GASKET RUBBER 6" | - | 1 |
| 10 | E | GASKET RUBBER 5" | - | 1 |
| 11 | | SCREW SOCKET NYLOCK SET 1/4-20 x 5/16" | 766015 | 3 |
| 12 | | HANDWHEEL | 124906 | 1 |
| 13 | C | O-RING 2-254 | 757491 | 1 |
| 14 | C | 30 DEGREE ELBOW - PAINTED RED | 126485 | 1 |
| 15 | | STORZ ADAPTER 5"/125MM W/LOCK, SEAL, GASKET | 107071 | 1 |
| 15 | | STORZ ADAPTER 4"/100MM W/LOCK, SEAL, GASKET | 116986 | 1 |
| 16 | C | PLUNGER RETRACTABLE SPRING | 745259 | 1 |
| 17 | | O-RING 2-207 | 757217 | 1 |
| 18 | | TRUNNION THREADED | 772224 | 1 |
| 19 | | ID PLATE | 127222 | 1 |
| 20 | | SCREW SOCKET BUTTON HEAD CAP 1/4-20 x 3/8 | 767190 | 2 |
| 21 | | SCREW SOCKET FLAT HEAD CAP #10-24 x 3/8 | 763065 | 2 |
| 22 | | DUST CAP | 126011 | 1 |
| 23 | | WASHER UHMW | 784250 | 2 |
| 24 | | BEARING .50 ID | 803175 | 1 |

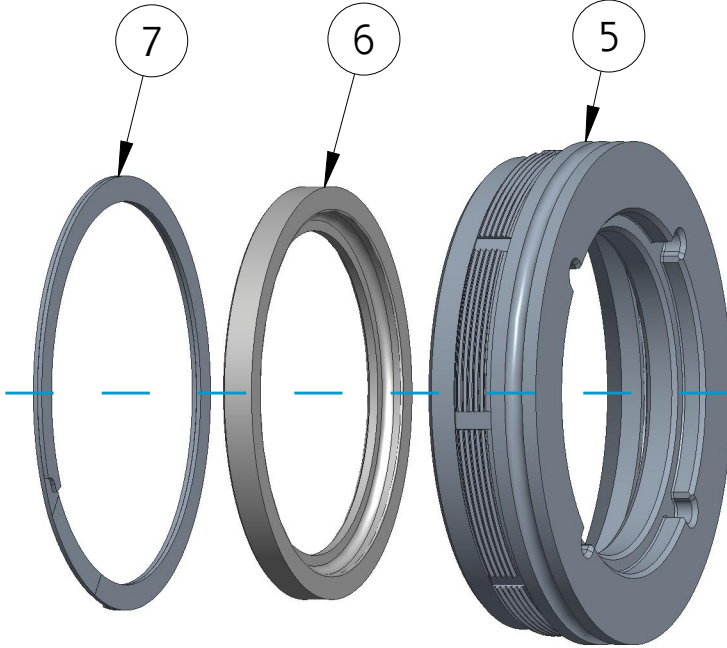
| Find | | Description | Item | QTY |
|------|--|---------------------------------------|--------|-----|
| 25 | | GEAR | 718314 | 1 |
| 26 | | WOODRUFF KEY 213 SS | 727071 | 1 |
| 27 | | BEARING .75 ID | 803176 | 1 |
| 28 | | SHAFT | 770404 | 1 |
| 29 | | WASHER | 784251 | 4 |
| 30 | | NUT HEX LOCK 3/8-16 | 734093 | 1 |
| 32 | | O-RING 2-210 | 757226 | 3 |
| 33 | | WASHER THRUST | 784104 | 2 |
| 34 | | TRUNNION | 124919 | 1 |
| 36 | | GEAR SECTOR LH | 718316 | 1 |
| 37 | | CAP GEAR | 125848 | 1 |
| 38 | | SCREW PAN HEAD 5/16-18 x 5/8 | 765368 | 4 |
| 39 | | INDICATOR | 124916 | 1 |
| 40 | | WASHER | 784252 | 1 |
| 41 | | SCREW BUTTON HEAD 8-32 x 1/2" | 765370 | 1 |
| 42 | | VALVE HANDLE | 124918 | 1 |
| 43 | | O-RING 2-111 | 757269 | 1 |
| 44 | | RETAINER SEAT | 124915 | 1 |
| 45 | | BRASS WASHER | 784034 | 1 |
| 46 | | SEAT | 770424 | 1 |
| 47 | | SPRING WASHER | 770423 | 4 |
| 48 | | SCREW HEX SOCKET BUTTON 3/8-16 x 1/2" | 767159 | 1 |
| 49 | | WASHER 3/8 | 784126 | 1 |
| 50 | | SEAT | 768457 | 1 |
| 51 | | RELIEF PLUNGER | 124922 | 1 |
| 52 | | O-RING 2-222 | 757006 | 2 |
| 53 | | O-RING 2-231 | 757126 | 1 |
| 54 | | SPRING | 770422 | 1 |
| 55 | | RELIEF BODY | 128268 | 1 |
| 56 | | RELIEF ADJUSTMENT NUT | 124911 | 1 |
| 57 | | SNAP RING | 758362 | 1 |



REPAIR TOOL 79801047
IS AVAILABLE FOR ITEM 5
TO REMOVE SEAL ITEM 6



G: IF YOU HAVE THE ABOVE CONFIGURATION
AND YOU ARE REPLACING THE SEAL - ITEM 6
YOU MUST ORDER ITEMS 5 AND 7 TO MATCH
NEW SEAL CONFIGURATION AS SHOWN BELOW



A: THE INLET AND OUTLET BOTH USE BALL BEARING SWIVELS.
THE QUANTITY USED IS AS FOLLOWS:
3" INLET FEMALE - 47
4" INLET FEMALE - 58
4.5" INLET FEMALE - 69
5" INLET FEMALE - 72
4" INLET STORZ - 54
5" INLET STORZ - 61
5" OR 6" OUTLET SWIVEL - 88

B: KIT OF 50 BALLS: 123074, INCLUDES ITEM 8 (1x).
C: 7982 ONLY.
D: OPTIONAL DRAFTING GASKETS FOR STORZ
4" P/N - 714211
5" P/N - 714212
6" P/N - 714213
E: FOR ITEMS 3, 6, 10 ORDER REPAIR KIT 91690001,G
F: FOR OTHER THREADS ORDER BY DESCRIPTION AND THREAD
SIZE (ODM & TPI) OR BY AKRON THREAD CODE.

PHONE: 800.228.1161 | www.akronbrass.com

WARRANTY AND DISCLAIMER*: We warrant Akron Brass products for a period of five (5) years* after purchase against defects in materials or workmanship. Akron Brass will repair or replace product which fails to satisfy this warranty. Repair or replacement shall be at the discretion of Akron Brass. Products must be promptly returned to Akron Brass for warranty service. We will not be responsible for: wear and tear; any improper installation, use, maintenance or storage; negligence of the owner or user; repair or modification after delivery; failure to follow our instructions or recommendations; or anything else beyond our control. WE MAKE NO WARRANTIES, EXPRESS OR IMPLIED, OTHER THAN THOSE INCLUDED IN THIS WARRANTY STATEMENT, AND WE DISCLAIM ANY IMPLIED WARRANTY OF MERCHANTABILITY OR FITNESS FOR ANY PARTICULAR PURPOSE. Further, we will not be responsible for any consequential, incidental or indirect damages (including, but not limited to, any loss of profits) from any cause whatsoever. No person has authority to change this warranty. *Unless otherwise provided herein. Akron Brass industrial electronic components & the Severe-Duty Monitor have a one (1) year warranty. Select Akron Brass handline nozzles and valves carry a ten (10) year warranty. Scene Star Lights carry a (6) year warranty. Weldon products have a two (2) year warranty from date of manufacture (excluding consumable components). Select Weldon LED products carry a five (5) year warranty. Honda products have the manufacturers' warranty and Akron Brass disclaims any warranty in respect of those products.
© 2016 Akron Brass Company. All rights reserved. No portion of this can be reproduced without the express written consent of the Akron Brass Company.

Parts List Sheet:

124912



| | |
|-------------------------|--------------|
| TECHNICAL SERVICE PARTS | |
| STYLE | 7982, 7983 |
| PRODUCT | INTAKE VALVE |

IF AN ITEM IS NOTED AS "NOT FIELD REPAIRABLE", OR YOU WISH TO RETURN AN ITEM TO AKRON BRASS FOR SERVICE PLEASE GO ONLINE TO, **ONLINEREPAIR.AKRONBRASS.COM**

| Chg. | Date |
|------|-------|
| 13 | 10-20 |
| 14 | 02-21 |

| Find | | Description | Item | QTY |
|------|---|---|--------|-----|
| 61 | | WASHER THICK | 784253 | 1 |
| 62 | | WASHER LARGE O.D. | 784254 | 1 |
| 63 | | CAP STORZ 4"W/CHAIN | 707359 | 1 |
| 63 | | CAP STORZ 5"W/CHAIN | 707360 | 1 |
| 63 | | CAP STORZ 6"W/CHAIN | 707373 | 1 |
| 64 | | LABEL BLEEDER VALVE | 729812 | 1 |
| 65 | | PLUG 1/4 NPT | 744011 | 1 |
| | | DRAIN VALVE | 779096 | 1 |
| 68 | | GASKET 5" BSP | 714209 | 1 |
| 73 | F | INLET ADAPTER 4"NH/M | 116895 | 1 |
| 67 | F | INLET ADAPTER 4.5"NH/M | 116891 | 1 |
| 67 | F | INLET ADAPTER 5"NH/M | 116892 | 1 |
| 67 | F | INLET ADAPTER 6"NH/M | 116893 | 1 |
| 75 | | WASHER FLAT | 784256 | 1 |
| 76 | | INLET SWIVEL ADAPTER 3"BB | 126045 | 1 |
| | F | SWIVEL 3"NH 3RL | 104013 | 1 |
| | | GASKET 3" | 714022 | 1 |
| 76 | | INLET SWIVEL ADAPTER 4"BB | 116886 | 1 |
| | F | SWIVEL 4"NH LH | 104049 | 1 |
| | | GASKET 4" | 714024 | 1 |
| 76 | | INLET SWIVEL ADAPTER 4.5"BB | 116888 | 1 |
| | F | SWIVEL 4.5"NH 4RL | 104016 | 1 |
| | F | SWIVEL 4.5"NH LH | 104050 | 1 |
| | | GASKET 4.5" | 714025 | 1 |
| 76 | | INLET SWIVEL ADAPTER 5"BB | 116889 | 1 |
| | F | SWIVEL 5"NH 4RL | 104017 | 1 |
| | | GASKET 5" | 714026 | 1 |
| 77 | | INLET SWIVEL ADAPTER 4"STORZ | 116887 | 1 |
| | | O-RING 2-243 | 757337 | 1 |
| | D | SWIVELING STORZ ADAPTER 4"/100MM W/LOCK, SEAL, GASKET | 713205 | 1 |
| 77 | | INLET SWIVEL ADAPTER 5"STORZ | 116890 | 1 |
| | | O-RING 2-247 | 757078 | 1 |
| | D | SWIVELING STORZ ADAPTER 5"/125MM W/LOCK, SEAL, GASKET | 713206 | 1 |
| 78 | | INLET ADAPTER 6"STORZ | 116896 | 1 |
| | D | STORZ ADAPTER 6"/150MM W/LOCK, SEAL, GASKET | 116897 | 1 |
| 79 | | PLUG 3/4 NPT STAINLESS STEEL | 744572 | 1 |

PHONE: 800.228.1161 | www.akronbrass.com

Parts List Sheet:

124912

WARRANTY AND DISCLAIMER*: We warrant Akron Brass products for a period of five (5) years* after purchase against defects in materials or workmanship. Akron Brass will repair or replace product which fails to satisfy this warranty. Repair or replacement shall be at the discretion of Akron Brass. Products must be promptly returned to Akron Brass for warranty service. We will not be responsible for: wear and tear; any improper installation, use, maintenance or storage; negligence of the owner or user; repair or modification after delivery; failure to follow our instructions or recommendations; or anything else beyond our control. WE MAKE NO WARRANTIES, EXPRESS OR IMPLIED, OTHER THAN THOSE INCLUDED IN THIS WARRANTY STATEMENT, AND WE DISCLAIM ANY IMPLIED WARRANTY OF MERCHANTABILITY OR FITNESS FOR ANY PARTICULAR PURPOSE. Further, we will not be responsible for any consequential, incidental or indirect damages (including, but not limited to, any loss of profits) from any cause whatsoever. No person has authority to change this warranty. *Unless otherwise provided herein. Akron Brass industrial electronic components & the Severe-Duty Monitor have a one (1) year warranty. Select Akron Brass handline nozzles and valves carry a ten (10) year warranty. Scene Star Lights carry a (6) year warranty. Weldon products have a two (2) year warranty from date of manufacture (excluding consumable components). Select Weldon LED products carry a five (5) year warranty. Honda products have the manufacturers' warranty and Akron Brass disclaims any warranty in respect of those products.

© 2016 Akron Brass Company. All rights reserved. No portion of this can be reproduced without the express written consent of the Akron Brass Company.