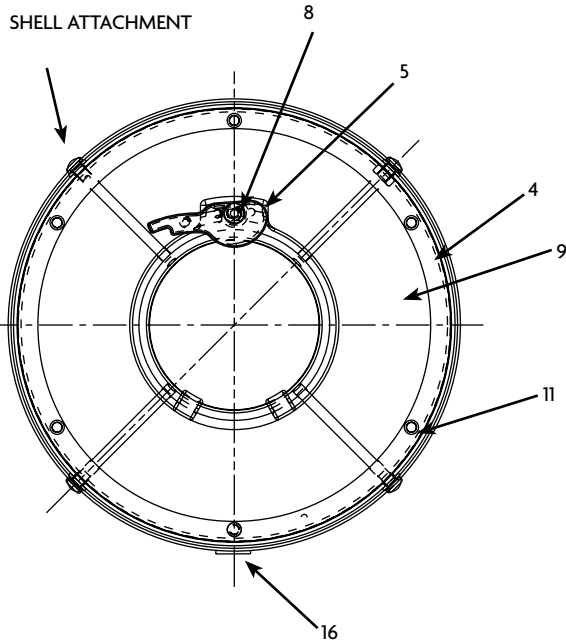
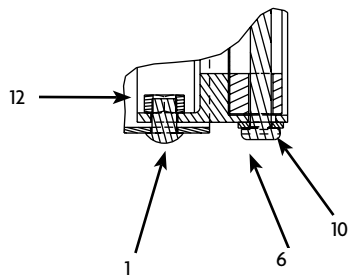


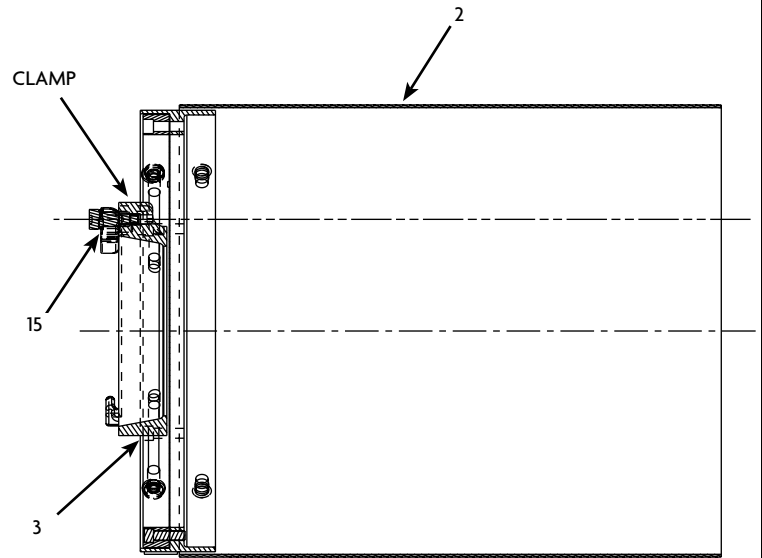
SHELL ATTACHMENT



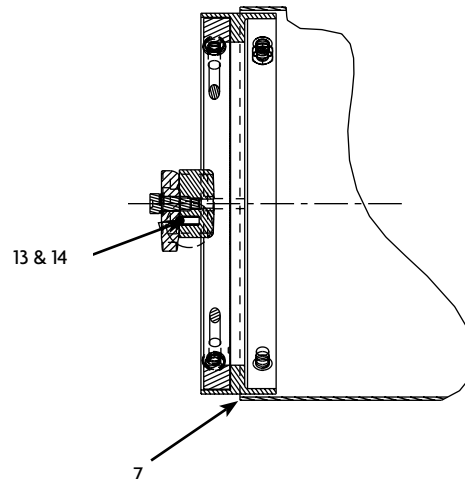
SHELL ATTACHMENT
DETAIL



CLAMP



CLAMP DETAIL



ITEM NO.	DESCRIPTION	PART NUMBER	QUANTITY		
			866	868	877
1	Socket Button Head	765153	4	4	4
2	Shell	118865	1	1	1
3	Housing Clamp	118901	1	-	-
3	Housing Clamp	118900	-	1	-
3	Housing Clamp	118864	-	-	1
4	End Stop	118869	1	1	1
5	Locking Cam	101868	1	1	1
6	Long Socket Head Bolt	765224	-	4	-
6	Long Socket Head Bolt	765223	4	-	4
7	Support Ring	118890	1	1	1
8	Hex Head Screw	767127	1	1	1
9	Screen	768327	1	1	1
10	Washer	784094	-	4	8
11	Socket Head Screw	763038	6	6	6
12	Nut	734061	4	4	4
13	Ball	703050	1	1	1
14	Spring	768023	1	1	1
15	O-Ring	757254	1	1	1
16	Label	704718	1	-	-
16	Label	704719	-	1	-
16	Label	704720	-	-	1

Operating Instructions

1. Turn the Locking Cam round side out.
2. Position the unit at a 45 degree angle to the bumper of the nozzle with the two ears on the foam tube base under the lip and between the lugs of the bumper.
3. Push the base over the bumper of the nozzle.
4. Rotate the Locking Cam into the fully locked position.

Warning: Fully engage Locking Cam before operating

- 250 GPM maximum flow
- 100 PSI maximum nozzle pressure
- Do not operate in wide fog