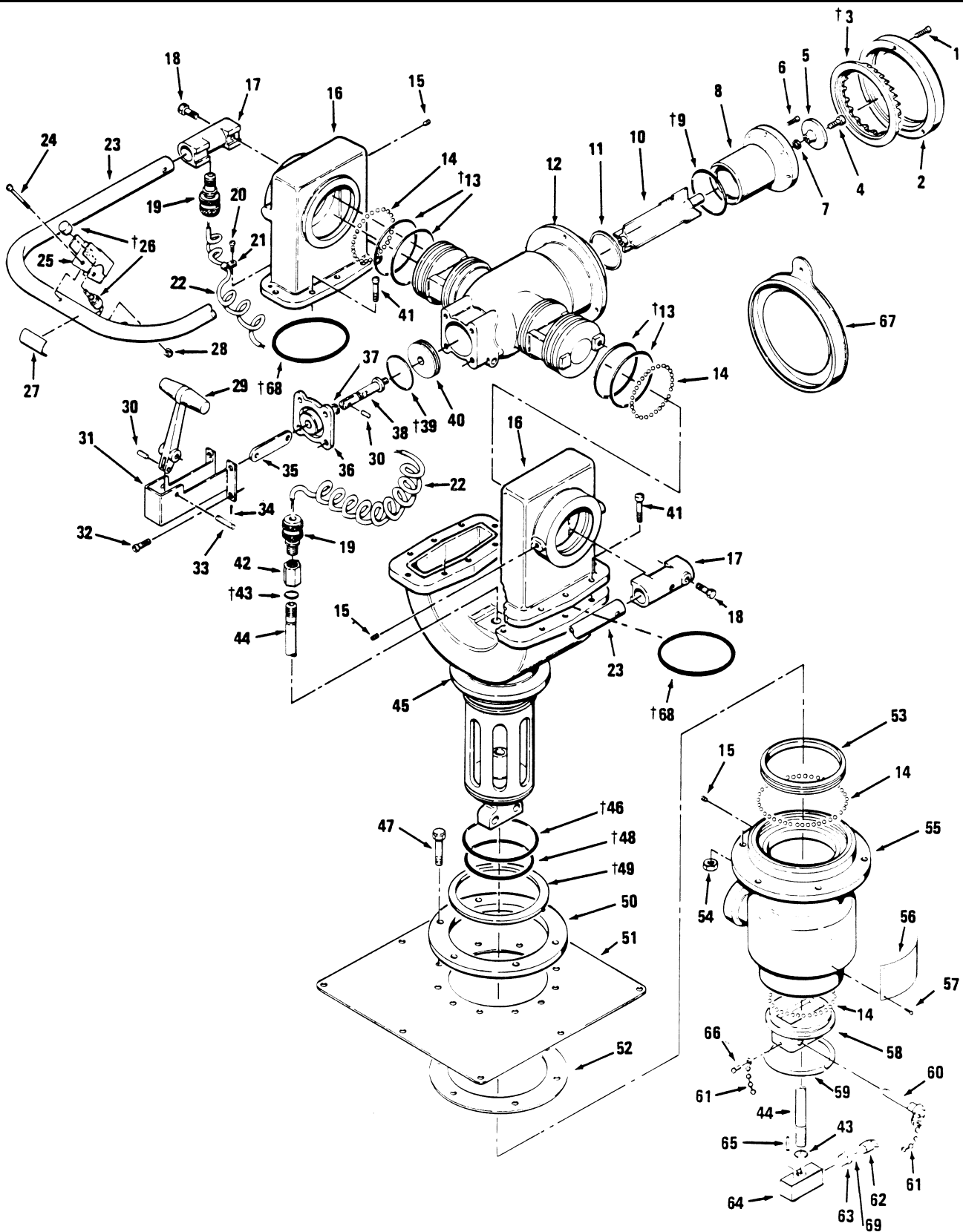


NOTE: This product is no longer in production. For service and repair, please contact Akron's

STYLE 3461

Turret

TECHNICAL SERVICE PARTS LIST



TECHNICAL SERVICE PARTS LIST

ITEM	DESCRIPTION	PART NUMBER	QTY.	ITEM	DESCRIPTION	PART NUMBER	QTY.
*1	Socket Head Cap Screw	7-65-052	3	36	Bearing Plate	105697	1
2	Retaining Ring	105700	1	37	Truarc Ring	7-58-132	1
†3	Turbine	7-72-101	1	38	Extension Blade	105691	1
*4	Socket Head Cap Screw	7-63-043	1	†39	O-Ring 2 X 1 3/4	7-57-032	1
5	Baffle Head	105689	1	40	Front Plunger	105698	1
*6	Socket Head Set Screw	7-65-042	4	*41	Socket Head Cap Screw	7-67-003	16
7	Spacer	7-69-224	1	42	Coupling	105690	1
8	Throat	105702	1	†43	O-Ring 1/2 X 3/8	7-57-034	2
†9	O-Ring 2 5/8 X 2 3/8	7-57-205	1	44	Wire Conduit	116019	1
10	Blade	105688	1	45	Siamese/Base	109858	1
11	Spirolox Ring	7-58-035	1	†46	O-Ring 3 3/4 X 3 1/2	7-57-036	1
12	Nozzle Body	105687	1	47	Hex Head Cap Screw	7-65-107	6
†13	O-Ring 3 1/8 X 2 7/8	7-57-065	4	†48	O-Ring 3 5/8 X 3 3/8	7-57-216	1
14	Ball Bearings	7-03-050	244	†49	Seal Ring	7-69-260	1
15	Socket Head Set Screw	7-65-083	3	50	Pot Flange	105692	1
16	Stanchion	105701	2	51	Mounting Plate	116688	1
17	Handle Mount	105694	2	52	Pot Flange Gasket	7-14-165	1
*18	Hex Head Cap Screw	7-65-106	2	53	Bearing Ring	7-03-035	1
19	Cable Grip	7-18-014	2	*54	Hex Nut	7-34-063	6
*20	Self-Tapping Screw	7-67-092	1	55	Roof Pot	105699	1
21	Nylon Cable Clamp	7-07-101	1	56	Name Plate	7-44-185	1
22	Coiled Cable	7-07-079	1	57	Drive Screw	7-67-006	4
23	Handle	7-21-177	1	58	Security Socket	115789	1
24	Pan Head Screw	7-65-105	1	59	Spirolox Ring	7-58-133	1
25	Switch Box	7-04-163	1	60	Security Pin	7-04-158	2
*†26	Push/Push Switch	7-69-288	1	61	Chain	7-06-254	2
27	Discharge Control Label	7-03-249	1	62	Plug Connector	7-07-102	1
*28	Hex Nut	7-34-064	1	63	Socket Connector	7-07-103	1
29	Pattern Lever	105693	1	64	Socket Connector Housing	116687	1
30	Clevis Pin	116686	2	65	Roll Pin	7-44-167	1
31	Lever Bracket	7-04-164	1	*66	Pan Head Screw	7-65-104	2
*32	Socket Head Cap Screw	7-66-036	4	67	Weather Seal Cap	7-07-097	1
33	Lever Pin	105696	1	†68	O-Ring 4 1/8 X 3 7/8	7-57-210	2
34	Cotter Pin	7-44-168	2	†69	O-Ring 3/4 X 5/8	7-57-055	1
35	Connecting Link	7-29-057	1				

*Loctite 222 or equivalent required upon reassembly.

†Parts included in Repair Kit Style 9171.