

OPERATING INSTRUCTIONS:

1. POSITION THE UNIT AT A 45° ANGLE TO THE BUMPER OF THE NOZZLE WITH THE TWO EARS ON THE FOAM TUBE BASE UNDER THE LIP AND BETWEEN THE LUGS OF THE BUMPER.
2. PUSH LEVER TO OPEN LATCH.
3. PUSH THE FOAM TUBE BASE OVER THE BUMPER OF THE NOZZLE.
4. RELEASE LEVER TO CLOSE LATCH.

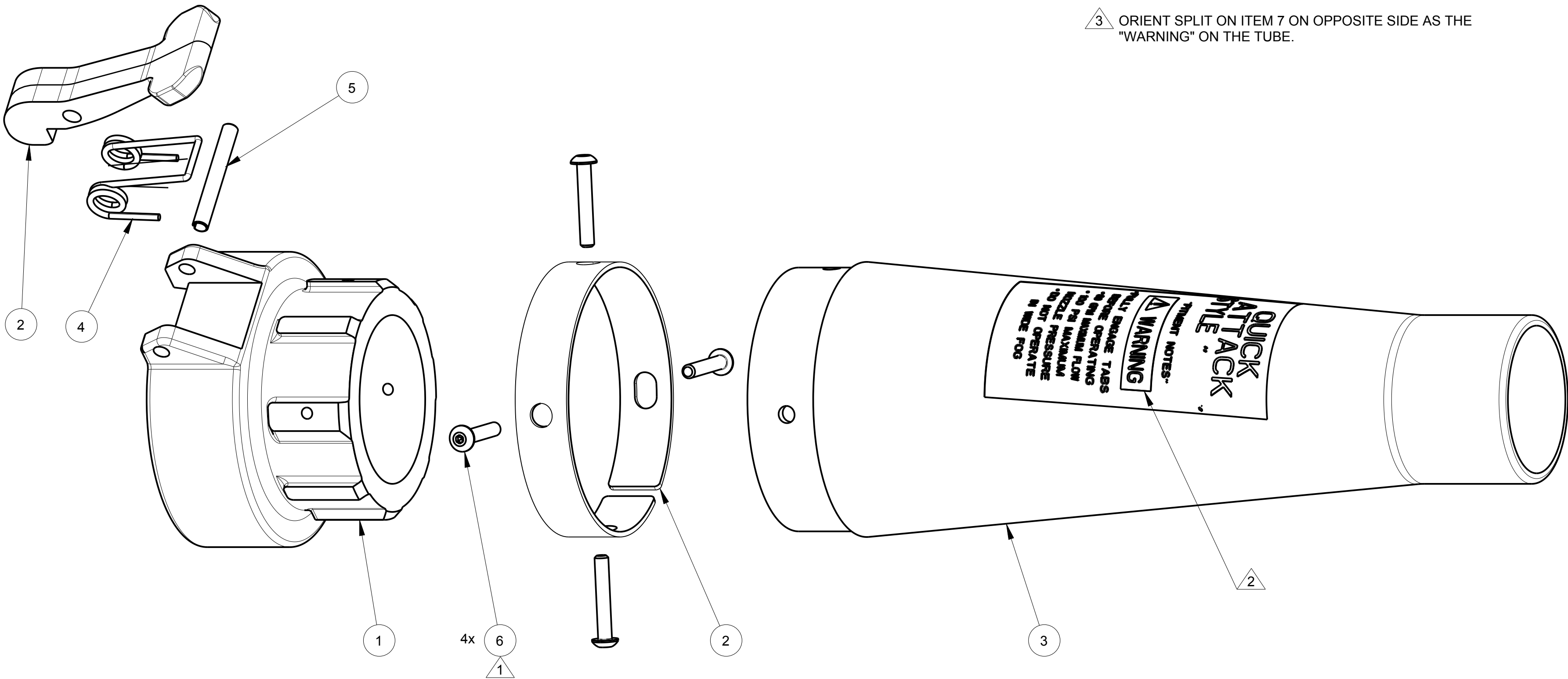
WARNING: FULLY ENGAGE LATCH BEFORE OPERATING.

- \* 125 GPM MAXIMUM FLOW.
- \* 100 PSI MAXIMUM NOZZLE PRESSURE
- \* DO NOT OPERATE IN WIDE FOG

Find	Description	Item	QTY
1	HOUSING FOAM TUBE 1"	125998	1
2	CLAMP FOAM TUBE 1"	101863	1
3	TUBE FOAM 1"	125059	1
4	SPRING	769386	1
5	PIN ROLL 3/16 X 1.5"	744107	1
6	SCREW SOC HD BUTTON 8-32 X 1"	765146	4
7	CLAMP RING	754066	1

ASSEMBLY NOTES:

- 1 USE PERMABOND LM113 OR LOCTITE 222.
- 2 "WARNING" ON TUBE IS TO BE CENTERED WITH THE BOSS ON THE HOUSING.
- 3 ORIENT SPLIT ON ITEM 7 ON OPPOSITE SIDE AS THE "WARNING" ON THE TUBE.



PHONE: 330.264.5678 or 800.228.1161 | FAX: 330.264.2944 or 800.531.7335 | [www.akronbrass.com](http://www.akronbrass.com)

WARRANTY AND DISCLAIMER\*: We warrant Akron Brass products for a period of five (5) years\* after purchase against defects in materials or workmanship. Akron Brass will repair or replace product which fails to satisfy this warranty. Repair or replacement shall be at the discretion of Akron Brass. Products must be promptly returned to Akron Brass for warranty service. We will not be responsible for: wear and tear; any improper installation, use, maintenance or storage; negligence of the owner or user; repair or modification after delivery; failure to follow our instructions or recommendations; or anything else beyond our control. WE MAKE NO WARRANTIES, EXPRESS OR IMPLIED, OTHER THAN THOSE INCLUDED IN THIS WARRANTY STATEMENT, AND WE DISCLAIM ANY IMPLIED WARRANTY OF MERCHANTABILITY OR FITNESS FOR ANY PARTICULAR PURPOSE. Further, we will not be responsible for any consequential, incidental or indirect damages (including, but not limited to, any loss of profits) from any cause whatsoever. No person has authority to change this warranty. \*Unless otherwise provided herein. Akron Brass industrial electronic components & the Severe-Duty Monitor have a one (1) year warranty. Select Akron Brass handline nozzles and valves carry a ten (10) year warranty. Scene Star Lights carry a (6) year warranty. Weldon products have a two (2) year warranty from date of manufacture (excluding consumable components). Select Weldon LED products carry a five (5) year warranty. Honda products have the manufacturers' warranty and Akron Brass disclaims any warranty in respect of those products.

© 2016 Akron Brass Company. All rights reserved. No portion of this can be reproduced without the express written consent of the Akron Brass Company.

Parts List Sheet:

126384