

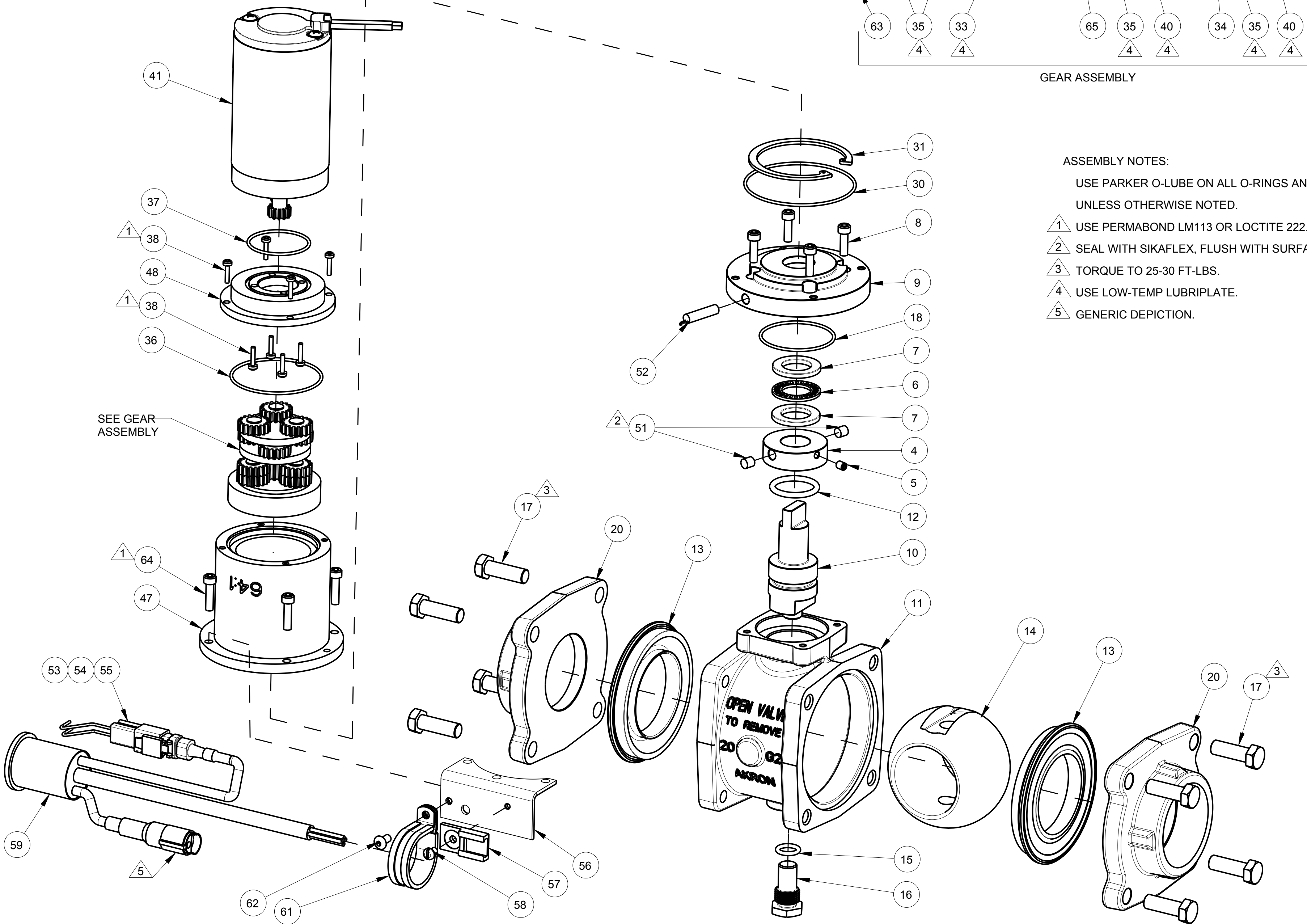


TECHNICAL SERVICE PARTS

STYLE 8620

PRODUCT QUICK ACTION S/O VALVE

Chg.	Date
04	10-13
05	11-13



GEAR ASSEMBLY

ASSEMBLY NOTES

USE PARKER O-LUBE ON ALL O-RINGS AND MATING SURFACES

UNLESS OTHERWISE NOTED.

- 1 USE PERMABOND LM113 OR LOCTITE 222.
- 2 SEAL WITH SIKAFLEX, FLUSH WITH SURFACE.
- 3 TORQUE TO 25-30 FT-LBS.
- 4 USE LOW-TEMP LUBRIPLATE.
- 5 GENERIC DEPICTION.

PHONE: 330.264.5678 or 800.228.1161 | FAX: 330.264.2944 or 800.531.7335 | www.akronbrass.com

WARRANTY AND DISCLAIMER*: We warrant Akron Brass products for a period of five (5) years* after purchase against defects in materials or workmanship. Akron Brass will repair or replace product which fails to satisfy this warranty. Repair or replacement shall be at the discretion of Akron Brass. Products must be promptly returned to Akron Brass for warranty service. We will not be responsible for: wear and tear; any improper installation, use, maintenance or storage; negligence of the owner or user; repair or modification after delivery; failure to follow our instructions or recommendations; or anything else beyond our control. **WE MAKE NO WARRANTIES, EXPRESS OR IMPLIED, OTHER THAN THOSE INCLUDED IN THIS WARRANTY STATEMENT, AND WE DISCLAIM ANY IMPLIED WARRANTY OF MERCHANTABILITY OR FITNESS FOR ANY PARTICULAR PURPOSE.** Further, we will not be responsible for any consequential, incidental or indirect damages (including, but not limited to, any loss of profits) from any cause whatsoever. No person has authority to change this warranty. *Unless otherwise provided herein. Akron Brass industrial electronic components & the Severe-Duty Monitor have a one (1) year warranty. Select Akron Brass headline nozzles and valves carry a ten (10) year warranty. Weldon products have a two (2) year warranty from date of manufacture (excluding consumable components). Select Weldon LED products carry a five (5) year warranty. Honda products have the manufacturers' warranty and Akron Brass disclaims any warranty in respect of those products.

Parts List Sheet:

120330

D43570



TECHNICAL SERVICE PARTS

STYLE 8620

PRODUCT QUICK ACTION S/O VALVE

Chg.	Date
04	10-13
05	11-13

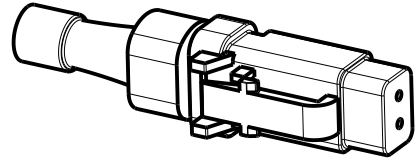
Find	Description	Item	QTY
4	RING MAGNET	756162	1
5	SCREW ALLEN HEAD CUP POINT SET #10-24 x 1/4	765025	1
6	BEARING ROLLER THRUST	703522	1
7	WASHER THRUST	784130	2
8	SCREW SOCKET HEAD CAP #10-24 x 5/8	765028	4
9	PLATE ADAPTER	742156	1
10	TRUNNION	773377	1
11	BODY VALVE	122026	1
12	O-RING 2-214	757010	1
13	SEAT VALVE	769561	2
14	BALL 2"	703124	1
15	O-RING 2-111	757198	1
16	TRUNNION	773094	1
17	SCREW HEX HEAD CAP 3/8-16 x 1-1/8	761092	8
18	O-RING 2-031	757363	1
20	ADAPTER VALVE 2" NPT	104989	2
30	O-RING 2-039	757263	1
31	RING RETAINING	758172	1
33	RIVET LONG **	754062	3
34	PLATE CARRIER ****	742119	1
35	GEAR PLANET 18 TOOTH ** / *** / ****	718165	12
36	O-RING 2-035	757280	1
37	O-RING 2-029	757056	1
38	SCREW SOCKET HEAD CAP #6-32 x 1/2	765052	8
40	RIVET SHORT *** / ****	754052	6
41	MOTOR GEAR 12V ITT CONNECTOR	35781082	1
41	MOTOR GEAR 24V ITT CONNECTOR	35781101	1
41	MOTOR GEAR 12V DEUTSCH PLUG	34911013	1
41	MOTOR GEAR 24V DEUTSCH PLUG	34911007	1
47	HOUSING	120268	1
48	PLATE MOTOR FACE	745165	1
51	MAGNET	731081	2
52	SWITCH	769599*	1
53	RECEPTACLE	758231*	1
54	CONTACT PIN	744379*	2
55	WEDGE LOCK	784131*	1
56	BRACKET MOUNTING	704918	1
57	CLIP MOUNTING	704589	1
58	SCREW PHILLIPS PAN HEAD #8-32 x 1/4	765208	1
59	HARNESS WIRING ITT CONNECTOR	721438	1
59	HARNESS WIRING DEUTSCH CONNECTOR	721686	1
61	CLAMP CABLE	707422	1
62	SCREW BUTTON HEAD #10-24 x 3/8	765143	1
63	PLATE OUTPUT CARRIER **	742157	1
64	SCREW SOCKET HEAD CAP #10-24 x 3/4	767086	4
65	PLATE CARRIER ***	744388	1

* SENSOR ASSEMBLY KIT: 34400003

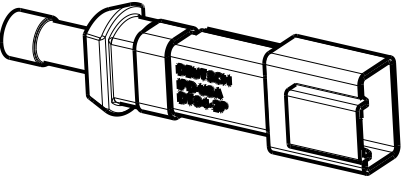
** FOR ITEMS 33, 35, 63 ORDER REPAIR KIT 86203005

*** FOR ITEMS 35, 40, 65 ORDER REPAIR KIT 86203006

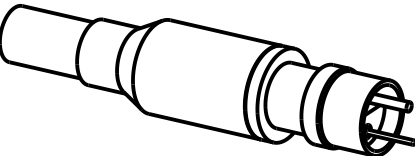
**** FOR ITEMS 34, 35, 40 ORDER REPAIR KIT 86203007



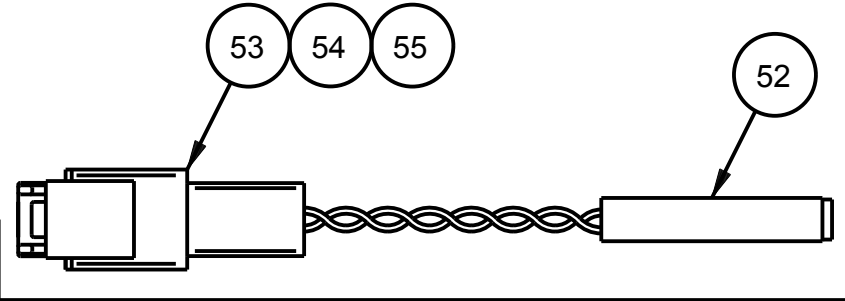
DEUTSCH PLUG



DEUTSCH CONNECTOR



ITT CONNECTOR



CUT WIRES TO 2 1/2 " LENGTH
STRIP 11/64 "
CRIMP (TOOL SET TO 24 GA)
INSERT INTO CONNECTOR SHELL
ASSEMBLE ORANGE LOCKING WEDGE
TWIST WIRES AFTER ASSEMBLY

PHONE: 330.264.5678 or 800.228.1161 | FAX: 330.264.2944 or 800.531.7335 | www.akronbrass.com

WARRANTY AND DISCLAIMER*: We warrant Akron Brass products for a period of five (5) years* after purchase against defects in materials or workmanship. Akron Brass will repair or replace product which fails to satisfy this warranty. Repair or replacement shall be at the discretion of Akron Brass. Products must be promptly returned to Akron Brass for warranty service. We will not be responsible for: wear and tear; any improper installation, use, maintenance or storage; negligence of the owner or user; repair or modification after delivery; failure to follow our instructions or recommendations; or anything else beyond our control. WE MAKE NO WARRANTIES, EXPRESS OR IMPLIED, OTHER THAN THOSE INCLUDED IN THIS WARRANTY STATEMENT, AND WE DISCLAIM ANY IMPLIED WARRANTY OF MERCHANTABILITY OR FITNESS FOR ANY PARTICULAR PURPOSE. Further, we will not be responsible for any consequential, incidental or indirect damages (including, but not limited to, any loss of profits) from any cause whatsoever. No person has authority to change this warranty. *Unless otherwise provided herein. Akron Brass industrial electronic components & the Severe-Duty Monitor have a one (1) year warranty. Select Akron Brass handline nozzles and valves carry a ten (10) year warranty. Weldon products have a two (2) year warranty from date of manufacture (excluding consumable components). Select Weldon LED products carry a five (5) year warranty. Honda products have the manufacturers' warranty and Akron Brass disclaims any warranty in respect of those products.

©Premier Farnell Corporation. 2012 All rights reserved. No portion of this can be reproduced without the express written consent of Premier Farnell Corporation

Parts List Sheet:

120330