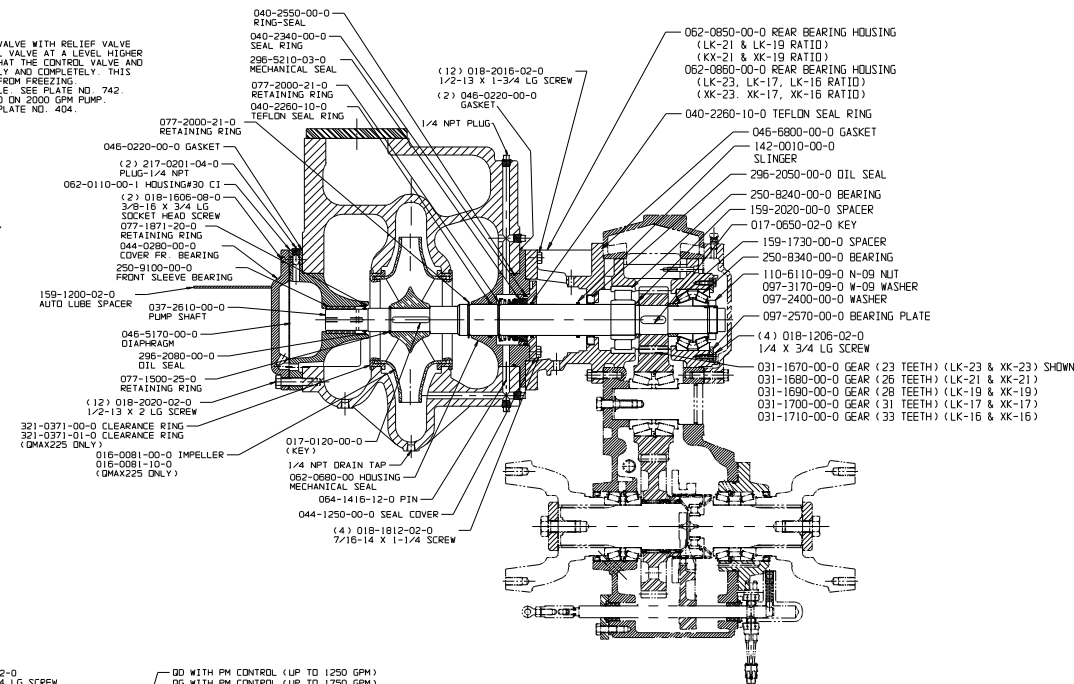
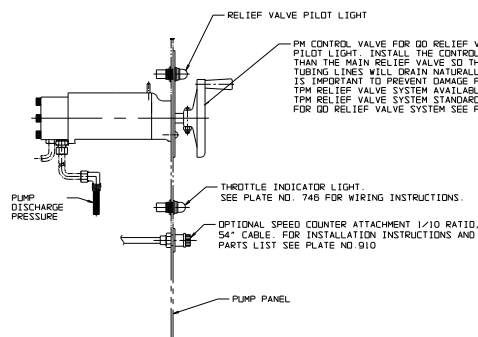
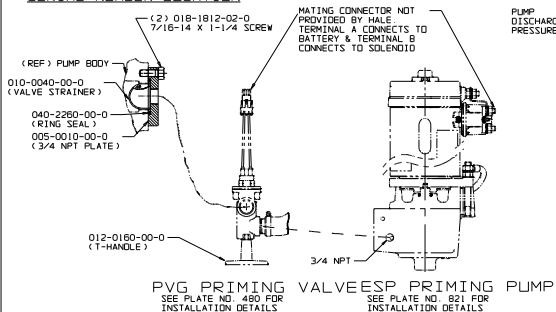


THIS PRODUCT AND ITS COMPONENTS  
MAY BE PROTECTED BY ONE OR MORE  
OF THE FOLLOWING U.S. PATENTS AND  
OTHER PATENTS PENDING:  
4,337,830, 4,587,862, 4,653,978,  
5,018,665, 5,139,393

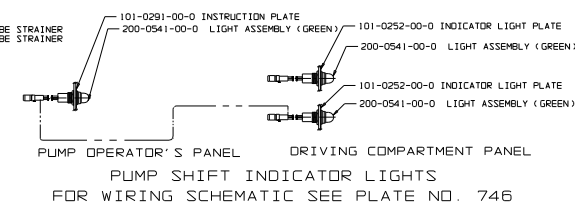
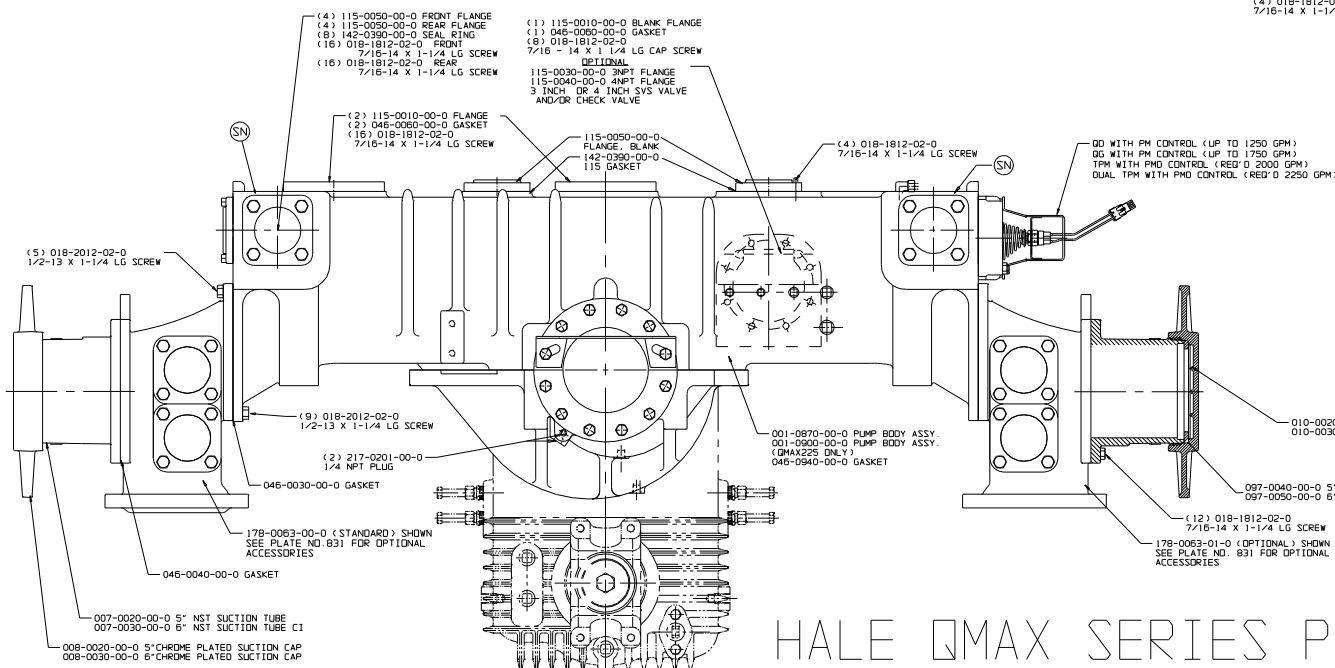
(SN)  
 SERIAL NUMBER LOCATION



SEE PLATE NO. 978 FOR "K" SERIES GEARBOX

NOTES:

1. SEE LIMIT CHART, HALE DOCUMENT F-72 FOR MAXIMUM ALLOWABLE PUMP PRESSURE, ENGINE HORSEPOWER AND TORQUE LIMITS FOR HALE CENTRIFUGAL PUMPS.
2. APPLY LOCTITE # 246 HIGH TEMPERATURE THREAD LOCKER OR EQUIVALENT TO SCREW THREADS AND TORQUE SCREWS PER HALE ENGINEERING STANDARD ES018-002
3. UNLESS OTHERWISE INDICATED FASTENERS ARE GRADE 5 ZINC PLATED STEEL



HALE QMAX SERIES PUMP  
WITH "K" SERIES GEARBOX

PLATE NO. 1156AB

[illegible]

HALE PRODUCTS, INC.  
A Unit of IDEX Corporation  
Conshohocken, PA 19428 USA

COPYRIGHT © NOT TO BE REPRODUCED OR USED TO MAKE OTHER DRAWINGS OR MACHINERY.	DRAWN CHECKED	SJM MAL	DATE 8-03-07	SIZE D	SCALE: FULL
---	------------------	------------	--------------	-----------	-------------