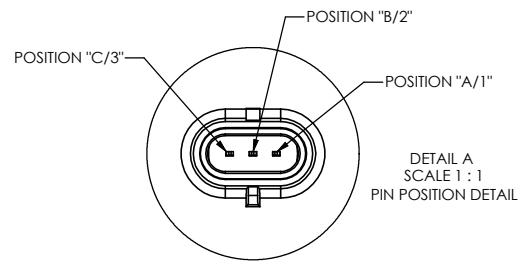
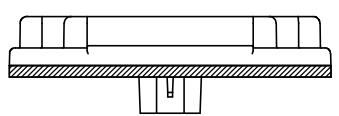
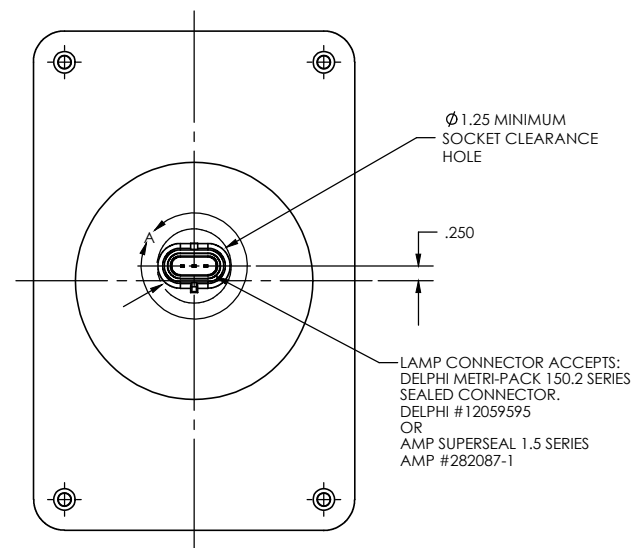
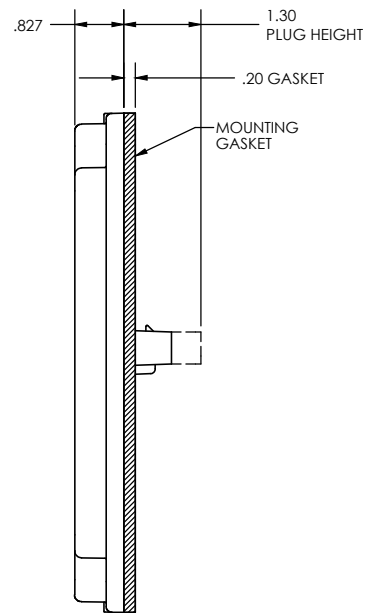
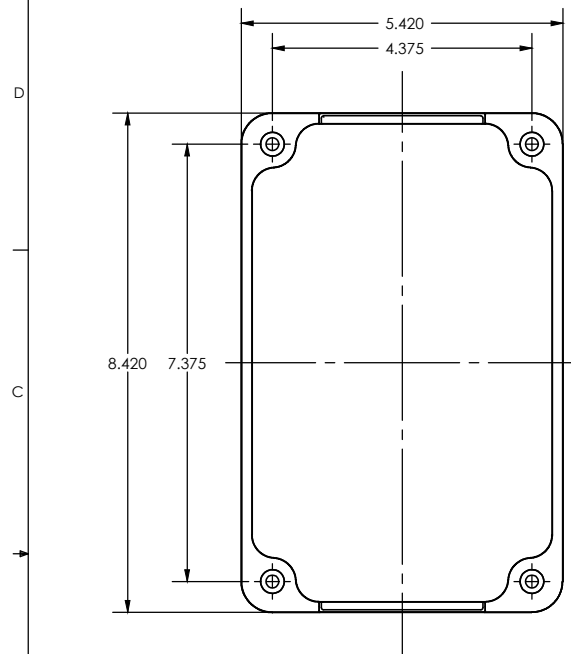


THIS DRAWING AND ALL INFORMATION CONTAINED HEREIN IS THE PROPERTY OF WELDON TECHNOLOGIES, INC. AND MAY NOT BE COPIED, REPRODUCED, OR DEVULGED TO UNAUTHORIZED PERSONS WITHOUT THE EXPRESS WRITTEN CONSENT OF WELDON TECHNOLOGIES, INC. AS IT IS BEING PROVIDED SOLELY FOR THE CONVENIENCE OF THE USER AND SHALL BE RETURNED TO WELDON TECHNOLOGIES, INC UPON REQUEST.

REVISIONS				
REV.	ECN	DESCRIPTION	DATE	BY / APVD
A	--	DRAWING RELEASE	4/2/09	TB



- NOTES:
- LAMPS COMPLY WITH FMVSS108 AND SAE STANDARDS REFERENCED THEREIN WITH RESPECT TO THE FOLLOWING:
 A) 5802-0100-10: STOP PER SAE J586; TURN PER SAE J588; TAIL PER SAE J585
 B) 5802-0100-20: TURN SIGNAL PER SAE J588; PARK LAMP PER SAE J222
 C) 5802-0100-21: TURN SIGNAL PER SAE J588
 D) 5802-0100-22: TURN SIGNAL PER SAE J588
 E) 5802-0100-30: REVERSING PER SAE J593
 F) PLASTIC MATERIALS PER SAE J576 JUL91
 G) COLOR PER SAE J578c FEB77
 H) TEST METHODS PER SAE J575e AUG70
 - INPUT VOLTAGE = 10-16 VDC
 - INSTALLATION SCREW TORQUE SHOULD NOT EXCEED 20 IN.-LB.
 - USE ONLY SPECIFIED MATING CONNECTOR.
 - IMPROPER USE OF THIS PRODUCT WILL VOID WARRANTY.

PART NUMBER	POSITION		
	A/1	B/2	C/3
5802-0100-10	GROUND	TAIL	STOP
5802-0100-20	GROUND	PARK	TURN
5802-0100-21	GROUND	N/C	TURN
5802-0100-22	GROUND	N/C	TURN
5802-0100-30	GROUND	N/C	REVERSE

UNLESS OTHERWISE SPECIFIED DIMENSIONS ARE IN INCHES TOLERANCES ARE: X.XXX - ±0.005 X.XX - ±0.020 X.X - ±0.050 ANGLES - ±0.5°	CAD GENERATED DRAWING. DO NOT MANUALLY UPDATE.		WELDON TECHNOLOGIES, INC.
	APPROVALS	DATE	
	DRAWN BARNETT	4/2/09	
	CHECKED		
MATERIAL			RECTANGULAR LAMP
FRESH			
DO NOT SCALE DRAWING	PROJ. NO. 00155-1	SCALE: 1:2	SIZE B PART NO. C5802-0100-00 REV. A WELDON COMPUTER GRAPHICS SHEET 1 OF 1