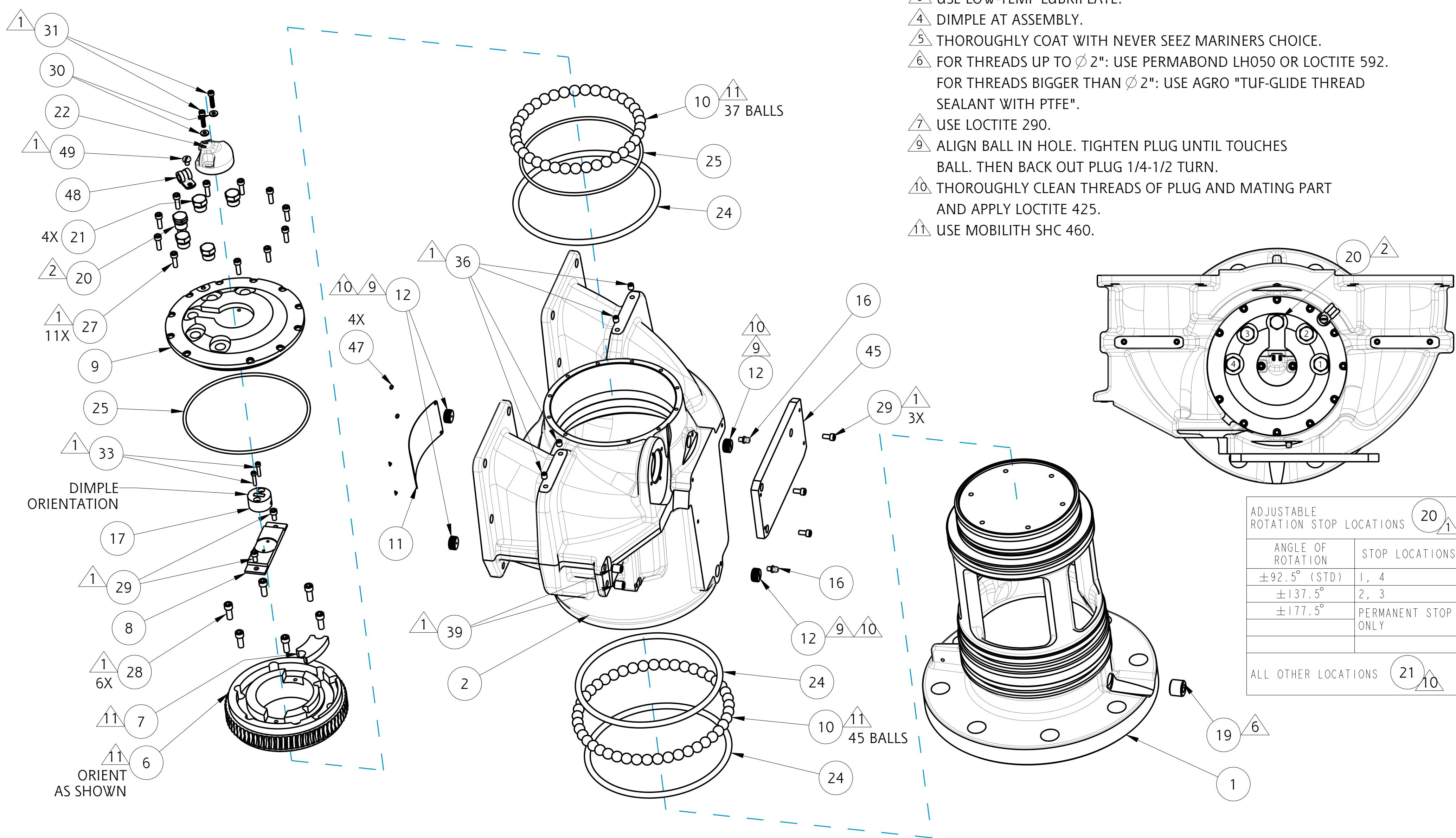


- ASSEMBLY NOTES:
- USE PARKER O-LUBE ON ALL O-RINGS AND MATING SURFACES UNLESS OTHERWISE NOTED.
- 1 USE PERMABOND LM113 OR LOCTITE 222.
  - 2 USE PRIMER T AND PERMABOND HH120 OR LOCTITE 277.
  - 3 USE LOW-TEMP LUBRIPLATE.
  - 4 DIMPLE AT ASSEMBLY.
  - 5 THOROUGHLY COAT WITH NEVER SEEZ MARINERS CHOICE.
  - 6 FOR THREADS UP TO  $\varnothing 2"$ : USE PERMABOND LH050 OR LOCTITE 592. FOR THREADS BIGGER THAN  $\varnothing 2"$ : USE AGRO "TUF-GLIDE THREAD SEALANT WITH PTFE".
  - 7 USE LOCTITE 290.
  - 9 ALIGN BALL IN HOLE. TIGHTEN PLUG UNTIL TOUCHES BALL. THEN BACK OUT PLUG 1/4-1/2 TURN.
  - 10 THOROUGHLY CLEAN THREADS OF PLUG AND MATING PART AND APPLY LOCTITE 425.
  - 11 USE MOBILITH SHC 460.



ASSEMBLY NOTES:  
USE PARKER O-LUBE ON ALL O-RINGS AND MATING SURFACES UNLESS OTHERWISE NOTED.

- 1 USE PERMABOND LM113 OR LOCTITE 222.
- 2 USE PRIMER T AND PERMABOND HH120 OR LOCTITE 277.
- 3 USE LOW-TEMP LUBRIPLATE.
- 4 DIMPLE AT ASSEMBLY.
- 5 THOROUGHLY COAT WITH NEVER SEEZ MARINERS CHOICE.
- 6 FOR THREADS UP TO Ø 2": USE PERMABOND LH050 OR LOCTITE 592.  
FOR THREADS BIGGER THAN Ø 2": USE AGRO "TUF-GLIDE THREAD SEALANT WITH PTFE".
- 7 USE LOCTITE 290.
- 9 ALIGN BALL IN HOLE. TIGHTEN PLUG UNTIL TOUCHES BALL. THEN BACK OUT PLUG 1/4-1/2 TURN.
- 10 THOROUGHLY CLEAN THREADS OF PLUG AND MATING PART AND APPLY LOCTITE 425.
- 11 USE MOBILITH SHC 460.



ADJUSTABLE ROTATION STOP LOCATIONS	
ANGLE OF ROTATION	STOP LOCATIONS
±92.5° (STD)	1, 4
±137.5°	2, 3
±177.5°	PERMANENT STOP ONLY
ALL OTHER LOCATIONS	





## TECHNICAL SERVICE PARTS

STYLE 3000

PRODUCT AEROMASTER I 2

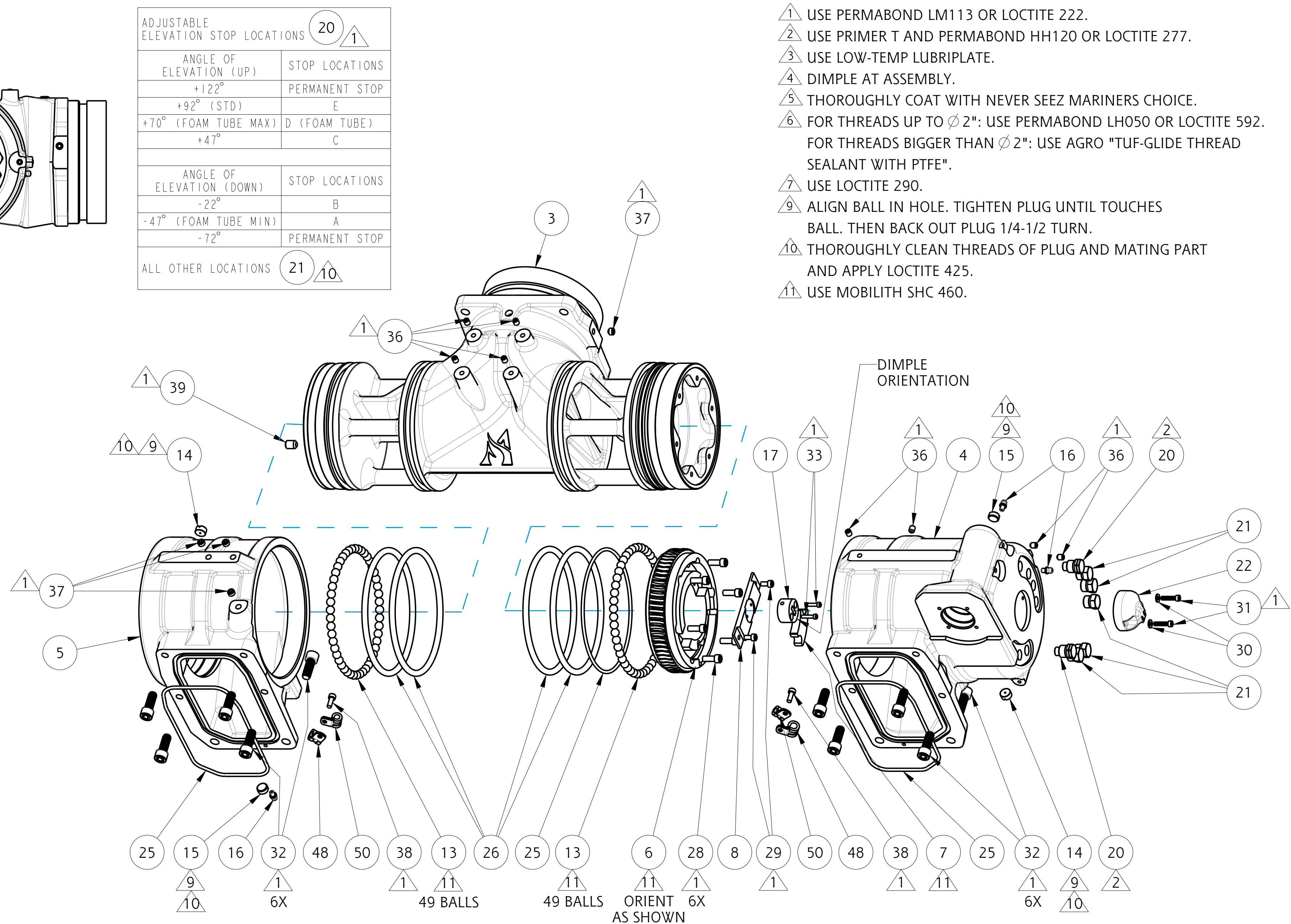
IF AN ITEM IS NOTED AS "NOT FIELD REPAIRABLE", OR YOU WISH TO RETURN AN ITEM TO AKRON BRASS FOR SERVICE PLEASE GO ONLINE TO, **ONLINEREPAIR.AKRONBRASS.COM**

Chg.	Date
00	07-22
01	08-24

ASSEMBLY NOTES:

USE PARKER O-LUBE ON ALL O-RINGS AND MATING SURFACES  
UNLESS OTHERWISE NOTED.

- 1 USE PERMABOND LM113 OR LOCTITE 222.
- 2 USE PRIMER T AND PERMABOND HH120 OR LOCTITE 277.
- 3 USE LOW-TEMP LUBRIPLATE.
- 4 DIMPLE AT ASSEMBLY.
- 5 THOROUGHLY COAT WITH NEVER SEEZ MARINERS CHOICE.
- 6 FOR THREADS UP TO  $\varnothing$  2": USE PERMABOND LH050 OR LOCTITE 592.  
FOR THREADS BIGGER THAN  $\varnothing$  2": USE AGRO "TUF-GLIDE THREAD SEALANT WITH PTFE".
- 7 USE LOCTITE 290.
- 9 ALIGN BALL IN HOLE. TIGHTEN PLUG UNTIL TOUCHES BALL. THEN BACK OUT PLUG 1/4-1/2 TURN.
- 10 THOROUGHLY CLEAN THREADS OF PLUG AND MATING PART AND APPLY LOCTITE 425.
- 11 USE MOBILITH SHC 460.



PHONE: 800.228.1161 | [www.akronbrass.com](http://www.akronbrass.com)

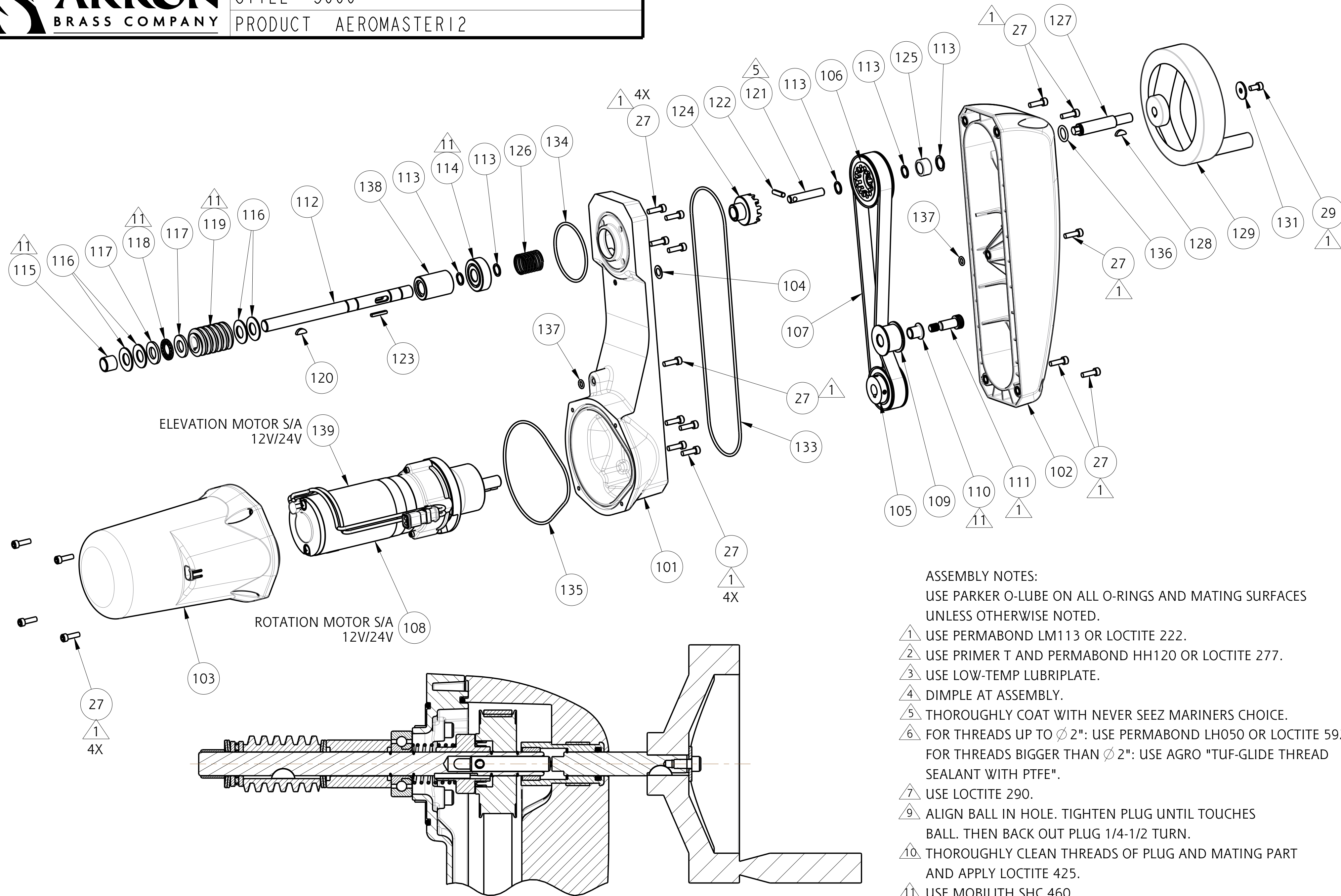
**WARRANTY AND DISCLAIMER\*:** We warrant Akron Brass products for a period of five (5) years\* after purchase against defects in materials or workmanship. Akron Brass will repair or replace product which fails to satisfy this warranty. Repair or replacement shall be at the discretion of Akron Brass. Products must be promptly returned to Akron Brass for warranty service. We will not be responsible for: wear and tear; any improper installation, use, maintenance or storage; negligence of the owner or user; repair or modification after delivery; failure to follow our instructions or recommendations; or anything else beyond our control. **WE MAKE NO WARRANTIES, EXPRESS OR IMPLIED, OTHER THAN THOSE INCLUDED IN THIS WARRANTY STATEMENT, AND WE DISCLAIM ANY IMPLIED WARRANTY OF MERCHANTABILITY OR FITNESS FOR ANY PARTICULAR PURPOSE.** Further, we will not be responsible for any consequential, incidental or indirect damages (including, but not limited to, any loss of profits) from any cause whatsoever. No person has authority to change this warranty. \*Unless otherwise provided herein. Akron Brass industrial electronic components & the Severe-Duty Monitor have a one (1) year warranty. Select Akron Brass headline nozzles and valves carry a ten (10) year warranty. Scene Star Lights carry a (6) year warranty. Weldon products have a two (2) year warranty from date of manufacture (excluding consumable components). Select Weldon LED products carry a five (5) year warranty. Honda products have the manufacturers' warranty and Akron Brass disclaims any warranty in respect of those products.

### Parts List Sheet:

128585

D49503





- ASSEMBLY NOTES:

USE PARKER O-LUBE ON ALL O-RINGS AND MATING SURFACES UNLESS OTHERWISE NOTED.

1 USE PERMABOND LM113 OR LOCTITE 222.

2 USE PRIMER T AND PERMABOND HH120 OR LOCTITE 277.

3 USE LOW-TEMP LUBRIPLATE.

4 DIMPLE AT ASSEMBLY.

5 THOROUGHLY COAT WITH NEVER SEEZ MARINERS CHOICE.

6 FOR THREADS UP TO Ø 2": USE PERMABOND LH050 OR LOCTITE 592. FOR THREADS BIGGER THAN Ø 2": USE AGRO "TUF-GLIDE THREAD SEALANT WITH PTFE".

7 USE LOCTITE 290.

8 ALIGN BALL IN HOLE. TIGHTEN PLUG UNTIL TOUCHES BALL. THEN BACK OUT PLUG 1/4-1/2 TURN.


9 THOROUGHLY CLEAN THREADS OF PLUG AND MATING PART AND APPLY LOCTITE 425.

10 USE MOBILITH SHC 460.

PHONE: 800.228.1161 | [www.akronbrass.com](http://www.akronbrass.com)

WARRANTY AND DISCLAIMER\*: We warrant Akron Brass products for a period of five (5) years\* after purchase against defects in materials or workmanship. Akron Brass will repair or replace product which fails to satisfy this warranty. Repair or replacement shall be at the discretion of Akron Brass. Products must be promptly returned to Akron Brass for warranty service. We will not be responsible for: wear and tear; any improper installation, use, maintenance or storage; negligence of the owner or user; repair or modification after delivery; failure to follow our instructions or recommendations; or anything else beyond our control. WE MAKE NO WARRANTIES, EXPRESS OR IMPLIED, OTHER THAN THOSE INCLUDED IN THIS WARRANTY STATEMENT, AND WE DISCLAIM ANY IMPLIED WARRANTY OF MERCHANTABILITY OR FITNESS FOR ANY PARTICULAR PURPOSE. Further, we will not be responsible for any consequential, incidental or indirect damages (including, but not limited to, any loss of profits) from any cause whatsoever. No person has authority to change this warranty. \*Unless otherwise provided herein. Akron Brass industrial electronic components & the Severe-Duty Monitor have a one (1) year warranty. Select Akron Brass handline nozzles and valves carry a ten (10) year warranty. Scene Star Lights carry a (6) year warranty. Weldon products have a two (2) year warranty from date of manufacture (excluding consumable components). Select Weldon LED products carry a five (5) year warranty. Honda products have the manufacturers' warranty and Akron Brass disclaims any warranty in respect of those products.

© 2016 Akron Brass Company. All rights reserved. No portion of this can be reproduced without the express written consent of the Akron Brass Company.



AKRON®

BRASS COMPANY

TECHNICAL SERVICE PARTS

STYLE    3000

PRODUCT    AEROMASTER I 2

IF AN ITEM IS NOTED AS "NOT FIELD REPAIRABLE", OR YOU WISH TO RETURN AN ITEM TO AKRON BRASS FOR SERVICE PLEASE GO ONLINE TO, **ONLINEREPAIR.AKRONBRASS.COM**

Chg.	Date
00	07-22
01	08-24

Find		Description	Item	Qty
1		BASE FLANGE - 6"/DIN 150	126088	1
2		SIAMESE	126089	1
3		OUTLET ELBOW	126090	1
4		STANCHION - GEARBOX	126091	1
5		STANCHION	126085	1
6		WORM GEAR	126087	2
7		SLIDER	126213	2
8		MAGNET LOCATION BAR	803264	2
9		GEAR BOX CAP	126086	1
10	A	BALL BRASS 1/2"	-	82
11		TAG ID	744575	1
12	D	PLUG SWIVEL 5/16-18	742090	4
13	B	BALL BRASS 3/8"	-	98
14	D	PLUG SWIVEL WITH HOLE 1/2-20	742123	2
15	D	PLUG SWIVEL 1/2-20	742112	2
16		FITTING GREASE 3/16	713191	5
17		MARKER POSITION MAGNET	731127	2
18		GAUGE PRESSURE 0-350 PSI, 0-2500 KPA 1.5" DIAL	718322	1
18		GAUGE PRESSURE 0-25 bars, 0-2.5 MPA 1.5"DIAL	718323	1
19		PLUG PIPE 1/2" NPT	744416	1
20		STOP	769843	7
21		PLUG	745187	9
22		ASSY SENSOR MAGNETIC ROTARY ANGLE	60430005	2
23		WIRING HARNESS	721713	1
24	D	O-RING 2-439	757498	3
25	D	O-RING 2-255	757338	5
26	D	O-RING 2-433	757499	4
27		SCREW SOCKET HEAD CAP #10-24 X 5/8"	765028	46
28		SCREW SOCKET HEAD CAP 1/4-20 X 5/8"	765029	12
29		SCREW SOCKET HEAD CAP #10-24 X 3/8"	767029	9
30		WASHER #8	784123	4
31		SCREW SOCKET HEAD CAP #8-32 X 5/8"	765360	4
32		SCREW SOCKET HEAD CAP 3/8-16 X 1"	767047	12
33		SCREW SOCKET HEAD CAP #6-32 X 5/8"	765179	4
34		CONTROLLER	60520009	1
35		PLUG PIPE 1/8"NPT	742192	1
36		SCREW SOCKET HEAD CUP POINT SET 1/4-20 x 5/16"	765047	12
37		SCREW SOCKET HEAD CUP POINT SET 5/16-18 x 1/4"	765071	4
38		SCREW SOCKET HEAD CAP #10-24 x 1/2"	763038	2
39		SCREW SOCKET HEAD CUP POINT SET 3/8-16 x 1/2"	765187	3

Find		Description	Item	Qty
45		PLATE CONTROL BOX MOUNTING	126214	1
46		SCREW FLAT HEAD #8-32 X 1/2"	765345	4
47		NAIL	736052	4
48		CLAMP CABLE 5/16	707548	3
49		SCREW PAN HEAD MACHINE #10-24 X 1/4"	765104	1
50		CLAMP CABLE 1/4	707189	2
201	C	GAS SPRING	768479	1
202	C	CLEVIS	126142	2
203	C	BUSHING	703819	4
204	C	SCREW SHOULDER 1/2"DIA X 1-1/2"LG 5/16-18	767165	2
205	C	SUPPORT GAS SPRING	122949	1
206	C	WASHER FLAT	784064	2
207	C	SCREW SOCKET HEAD CAP 3/8-16 X 1-1/4"	765154	2

A: KIT OF 50 BALLS: 116252  
B: KIT OF 50 BALLS: 109342

C: INCLUDED IN GAS SPRING KIT 30000003  
D: INCLUDED IN SERVICE KIT 92300001

PHONE: 800.228.1161 | [www.akronbrass.com](http://www.akronbrass.com)

WARRANTY AND DISCLAIMER\*: We warrant Akron Brass products for a period of five (5) years\* after purchase against defects in materials or workmanship. Akron Brass will repair or replace product which fails to satisfy this warranty. Repair or replacement shall be at the discretion of Akron Brass. Products must be promptly returned to Akron Brass for warranty service. We will not be responsible for: wear and tear; any improper installation, use, maintenance or storage; negligence of the owner or user; repair or modification after delivery; failure to follow our instructions or recommendations; or anything else beyond our control. WE MAKE NO WARRANTIES, EXPRESS OR IMPLIED, OTHER THAN THOSE INCLUDED IN THIS WARRANTY STATEMENT, AND WE DISCLAIM ANY IMPLIED WARRANTY OF MERCHANTABILITY OR FITNESS FOR ANY PARTICULAR PURPOSE. Further, we will not be responsible for any consequential, incidental or indirect damages (including, but not limited to, any loss of profits) from any cause whatsoever. No person has authority to change this warranty. \*Unless otherwise provided herein. Akron Brass industrial electronic components & the Severe-Duty Monitor have a one (1) year warranty. Select Akron Brass handline nozzles and valves carry a ten (10) year warranty. Scene Star Lights carry a (6) year warranty. Weldon products have a two (2) year warranty from date of manufacture (excluding consumable components). Select Weldon LED products carry a five (5) year warranty. Honda products have the manufacturers' warranty and Akron Brass disclaims any warranty in respect of those products.  
© 2016 Akron Brass Company. All rights reserved. No portion of this can be reproduced without the express written consent of the Akron Brass Company.

Parts List Sheet:

128585

D49503



TECHNICAL SERVICE PARTS	
STYLE	3000
PRODUCT	AEROMASTER I 2

IF AN ITEM IS NOTED AS "NOT FIELD REPAIRABLE", OR YOU WISH TO RETURN AN ITEM TO AKRON BRASS FOR SERVICE PLEASE GO ONLINE TO, **ONLINEREPAIR.AKRONBRASS.COM**

Chg.	Date
00	07-22
01	08-24

Find		Description	Item	QTY
101		FLANGE PULLEY	126215	2
102		PULLEY COVER	807107	2
103		MOTOR COVER	807106	2
104		ADHESIVE VENT	779095	2
105		PULLEY 28 TOOTH	745275	2
106		PULLEY 34 TOOTH	745276	2
107		BELT 5 MM HTD PITCH, 15 MM X 625 MM	803265	2
108		ROTATION MOTOR/GEAR BOX - 24V	30001001	1
108		ROTATION MOTOR/GEAR BOX - 12V	30001003	1
109		PULLEY TENSIONER	745274	2
110		BUSHING	803266	2
111		SHOULDER BOLT 3/8 DIA. x 3/4 LG - 5/16-18	803267	2
112		SHAFT WORM	768473	2
113		RING RETAINING	758149	10
114		BALL BEARING	803098	2
115		BEARING SLEEVE	703995	2
116		SPRING BELLEVILLE	769276	8
117		WASHER THRUST	784121	4
118		BEARING NEEDLE	703453	2
119		GEAR WORM	718273	2
120		KEY WOODRUFF 1/8 X 1/2	727025	2
121		SHAFT	770452	2
122		PIN ROLL	744068	2
123		KEY SPECIAL	727044	2
124		DOG CLUTCH	807105	2
125		BEARING ROLLER NEEDLE	704395	2
126		SPRING COMPRESSION	768403	2
127		SHAFT OVERRIDE	770451	2
128		KEY WOODRUFF 3/32 X 1/2	727026	2
129		HANDWHEEL	721608	2
131		WASHER	784164	2
133	D	O-RING 2-171	757435	2
134	D	O-RING 2-141	757195	2
135	D	O-RING 2-157	757360	2
136	D	O-RING 2-112	757313	2
137	D	O-RING 2-010	757005	4
138		SPACER	769995	2
139		ELEVATION MOTOR/GEAR BOX - 24V	30001002	1
139		ELEVATION MOTOR/GEAR BOX - 12V	30001004	1

A: KIT OF 50 BALLS: 116252  
B: KIT OF 50 BALLS: 109342  
  
C: INCLUDED IN GAS SPRING KIT 30000003  
D: INCLUDED IN SERVICE KIT 92300001

PHONE: 800.228.1161 | [www.akronbrass.com](http://www.akronbrass.com)

WARRANTY AND DISCLAIMER\*: We warrant Akron Brass products for a period of five (5) years\* after purchase against defects in materials or workmanship. Akron Brass will repair or replace product which fails to satisfy this warranty. Repair or replacement shall be at the discretion of Akron Brass. Products must be promptly returned to Akron Brass for warranty service. We will not be responsible for: wear and tear; any improper installation, use, maintenance or storage; negligence of the owner or user; repair or modification after delivery; failure to follow our instructions or recommendations; or anything else beyond our control. WE MAKE NO WARRANTIES, EXPRESS OR IMPLIED, OTHER THAN THOSE INCLUDED IN THIS WARRANTY STATEMENT, AND WE DISCLAIM ANY IMPLIED WARRANTY OF MERCHANTABILITY OR FITNESS FOR ANY PARTICULAR PURPOSE. Further, we will not be responsible for any consequential, incidental or indirect damages (including, but not limited to, any loss of profits) from any cause whatsoever. No person has authority to change this warranty. \*Unless otherwise provided herein. Akron Brass industrial electronic components & the Severe-Duty Monitor have a one (1) year warranty. Select Akron Brass handline nozzles and valves carry a ten (10) year warranty. Scene Star Lights carry a (6) year warranty. Weldon products have a two (2) year warranty from date of manufacture (excluding consumable components). Select Weldon LED products carry a five (5) year warranty. Honda products have the manufacturers' warranty and Akron Brass disclaims any warranty in respect of those products.  
© 2016 Akron Brass Company. All rights reserved. No portion of this can be reproduced without the express written consent of the Akron Brass Company.

Parts List Sheet:

128585

D49503