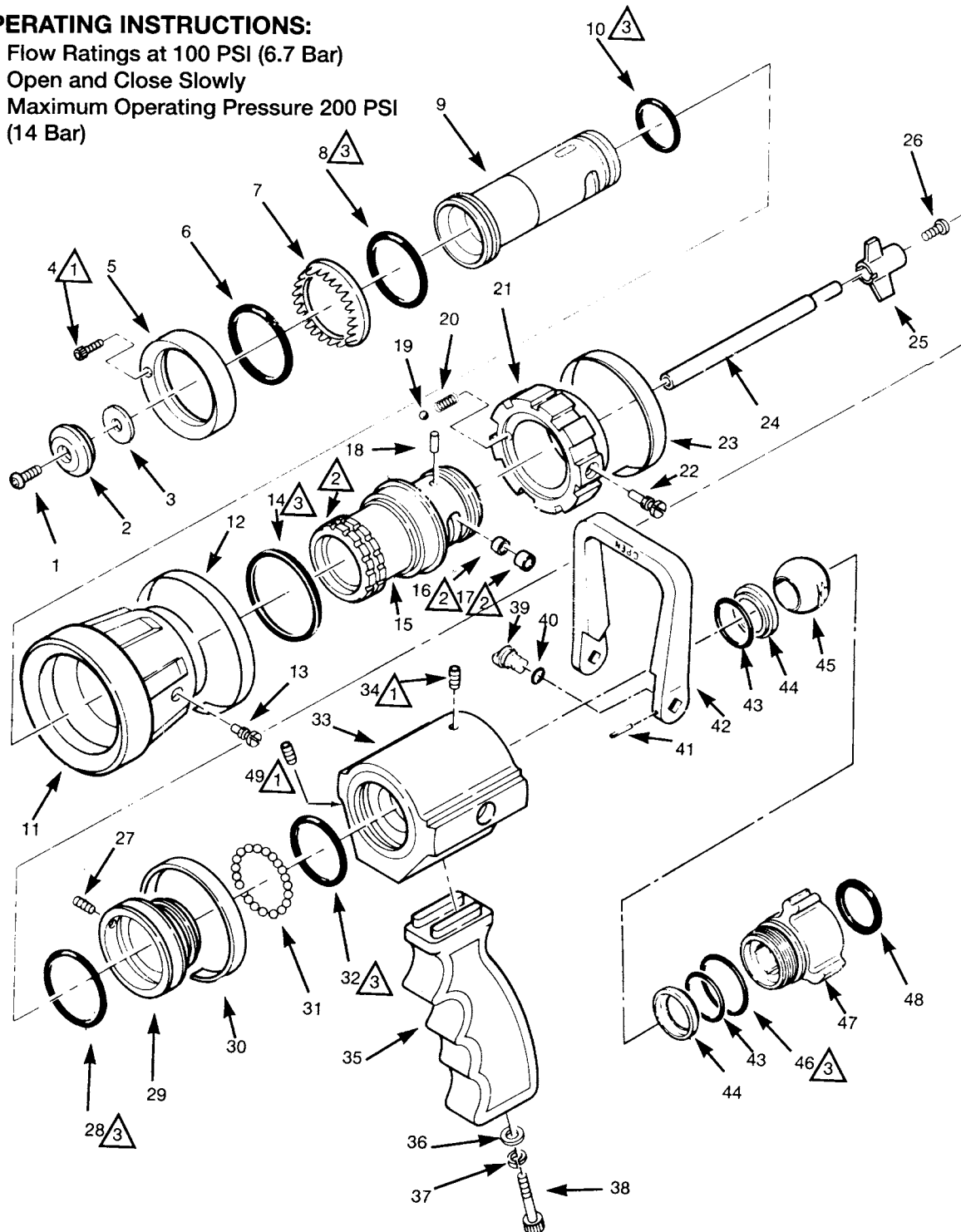


**OPERATING INSTRUCTIONS:**

- Flow Ratings at 100 PSI (6.7 Bar)
- Open and Close Slowly
- Maximum Operating Pressure 200 PSI (14 Bar)



**Assembly Notes:**

- 1** Use Loctite 222 or Permabond LM 113
- 2** Use Low-Temp Lubriplate
- 3** Use Parker O-Ring lubricant or equivalent petroleum base lubricant

ITEM NO.	DESCRIPTION	PART NUMBER	QUANTITY	
			1715	1720
1	Socket Head Cap Screw	765153	1	1
2	Baffle Head	102222	1	1
3	Shim	768190	as req.	as req.
4	Socket Head Cap Screw	767094	2	2
5	Turbine Retaining Ring	758183	1	1
6	O-Ring	757280	1	1
7*	Turbine Teeth	772136	1	1
8	O-Ring	757244	1	1
9	Discharge Tube	102248	1	1
10	O-Ring	757242	1	1
11	Bumper Assembly	17150011	1	1
12	Indicating Band	704281	1	1
13	Pattern Stop Screw	769406	1	1
14	Seal	717042	1	1
15	Nozzle Body	102221	1	1
16	Cam Roller - Short	758210	1	1
17	Cam Roller - Long	758211	1	1
18	Key Pin	727034	1	1
19	Detent Ball	704018	1	1
20	Detent Spring	769111	1	1
21	Discharge Control Ring	758182	1	1
22	Cam Axle	707252	1	1
23	Discharge Control Band - GPM	704282	1	1
23	Discharge Control Band - LPM	704287	1	1
24	Stem††	102224	1	1
25	Spider††	769407	1	1
26	Cap Screw††	765030	1	1
27	Set Screw	765040	1	1
28	O-Ring	757232	1	1
29	Adapter	102220	1	1
30	I.D. Band	704283	1	
30	I.D. Band	704286		1
31	Locking Balls	**	32	32
32	O-Ring	757283	1	1
33	Shutoff Body	107898	1	
33	Shutoff Body for Pistol Grip	102245		1
34	Set Screw	765008	1	1
35	Pistol Grip	718233		1
36	Washer	784093		1
37	Lock Washer	784090		1
38	Socket Head Cap Screw	763064		1
39	Trunnion	107857	2	2
40*	O-Ring	757282	2	2
41*	Roll Pin	744080	2	2
42	Handle	721417	1	1
43*	O-Ring	757281	2	2
44*	Seat	769245	2	2
45*	Ball	704006	1	1
46*	O-Ring	757375	1	1
47	Swivel Assembly (1 1/2" NH)†	17150012	1	1
47	Swivel Assembly (1 1/2" NPSH)†	17150013	1	1
48*	Swivel Gasket 1 1/2"	717042	1	1
49	Set Screw	766015	1	1

\*Parts included in Field Service kit #9108

†For other threads order by description and thread size (ODM and TPI) or by Akron Thread Code.

repair.

\*\*Packet of 50 Locking Balls - P/N 109042.

††Should be returned to the factory for